

PEX PLUMBING SYSTEM

2024 PRODUCT CATALOG



High-Quality. Durable. Reliable.

Jones Stephens is a leader of rough plumbing products with a strong brand built on providing 30 years of innovation for professional contractors. Known for world-class service, Jones Stephens offers the broadest selection of high-quality and reliable plumbing products, from repair and installation parts to tools and leading-edge innovations.

Our mission is simple. Provide maximum value and the highest quality products for plumbing and gas applications.

Every job is worth doing right the first time. At Jones Stephens, we source and deliver products and solutions that empower our customers to get any job done—and done right—the first time.

When you choose Jones Stephens, we want you to be confident. Confident that we're continually innovating on your behalf to make the next job better. Confident that you can find everything you need in our extensive inventory. Confident that your order will arrive exactly when you need it. Confident that the products you receive are made to the highest standards. Because we see our customers as our partners in all that we do. And in all that we do, we strive to be able to say confidently and together: **We Got It.**



QUICK



CORRECT



COMPLETE



WE GOT IT

Table of Contents

Features and Certifications

Features	4
Standards and Certifications	5

PEX-A

Potable Water Pipe	6
Oxygen Barrier Pipe	8

PEX-B

Potable Water Pipe	9
--------------------------	---

Expansion Fittings

F1960 Brass Fittings	12
F1960 Poly Fittings	16
Expansion Rings	19

Crimp Fittings

F1807 Brass Fittings	20
Crimp Rings	23
Clamps	24
F2159 Poly Fittings	25

Tools for PEX Products

Tools	27
-------------	----

Warranty and Training

Warranty	28
Training	29

Features of PEX Plumbing System

Strategically sourced and manufactured, Jones Stephens' PEX Piping System includes high-quality pipe and fittings designed to deliver safe water and make jobsite installations fast and simple. Our comprehensive PEX Piping System includes PEX-A pipe for potable water and oxygen barrier applications, PEX-B pipe for potable water, and the necessary F1960 Expansion and F1807/F2159 Crimp fittings to complete the rough-in system.

Jones Stephens' PEX pipe is ideal for all new construction and repair jobs and meets the highest industry standards, certifications, and compliance requirements. Proven and guaranteed, when you install our PEX pipe and fittings system, you can trust that your installation is backed by a reliable warranty.

PEX-A and PEX-B Pipe



Jones Stephens' PEX pipe is manufactured of crosslinked polyethylene and is available for potable water or oxygen barrier applications. Red, White, and Blue colored coils and sticks are available to meet your specific installation needs.



QUIET

PEX pipe expands to absorb sound from water hammer – providing quiet operation.



FLEXIBLE

With its superior, durable crosslinking pattern, PEX pipe is highly flexible.



ENERGY SAVING

PEX pipe's high thermal resistance allows hot water lines to stay hot longer than copper or CPVC pipe – saving valuable energy.



EASY INSTALL

PEX pipe creates less kinking and requires less fittings compared to alternate piping methods, making installation simple and saving the installer time and energy.



CORROSION RESISTANT

While copper can corrode with mineral build up, PEX pipe is corrosion resistant – increasing the durability of the system.

PEX Expansion and Crimp Fittings



Jones Stephens' PEX fittings are manufactured of high-quality brass and poly and are available in expansion and crimp connection styles.



HIGH-QUALITY

Made with strong polymer or brass material, F1960 expansion fittings, F1807 brass crimp fittings, and F2159 poly crimp fittings provide a dependable plumbing connection.



RELIABLE

F1960 expansion fittings, F1807 brass crimp fittings, and F2159 poly crimp fittings provide a secure, leak-free connection.

Jones Stephens backs our PEX piping system with a **25-year limited warranty** when used as a complete system. See page 28 for warranty details.

Standards and Certifications



PEX-A Pipe for Potable Water & Oxygen Barrier

- NSF certified to ASTM F876/877 and CSA B137.5- 2017/2011a per NSF/ANSI 14, 61 and 372
- ANSI/NSF14 and ANSI/NSF 61 approved
- Approved for use with ASTM F1960
- ASTM E84, ASTM F876, ASTM F877, ASTM F2023, ASTM E814, and ASTM E119/UL 263 approved
- CAN/ULC S101 and ULC S102.2 approved
- CSA B214 approved
- AWWA C904 approved
- Certified by ICC-ES to meet PMG-1559 standard



PEX-B Pipe for Potable Water

- NSF/ANSI 14, 61 and 372 approved
- ASTM E84, ASTM E119, ASTM F876, ASTM F877 approved
- Approved for use with ASTM F1807, and ASTM F2159
- Meets CSA B137.5 standard
- CAN S101 and S102.2 approved



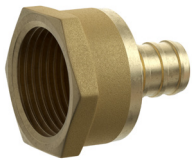
F1960 Brass Expansion Fittings

- Tested and certified to ASTM F1960-2021
- Certified to NSF/ANSI/CAN 61-2021, NSF/ANSI/CAN 372-2022, and NSF/ANSI 14-2015
- Certified to CSA B137.5-2020
- cUPC listed



F1960 Poly Expansion Fittings

- Tested and certified to ASTM F1960-2018a and ASTM F877-2020
- Certified to NSF/ANSI/CAN 61-2022, NSF/ANSI 14-2016a, and NSF/ANSI/CAN 372-2022
- Certified to CSA B137.5-2020
- cUPC listed



F1807 Brass Crimp Fittings

- Certified to NSF/ANSI 372-2016, NSF/ANSI 61-2021, and NSF/ANSI 14-2010a
- Certified to CSA B125.14
- Certified to IAMPO/ANSI Z1157-2014e1
- cUPC Listed



F2159 Poly Crimp Fittings

- Certified to ASTM F2159-2019 and CSA B137.5-2020
- Certified to ASTM F877-2020 and CSA B137.5-2020
- Certified to NSF/ANSI 14-2016a, and NSF/ANSI 372-2022
- Certified to NSF/ANSI/CAN 61-2022
- cUPC listed

Jones Stephens backs our PEX piping system with a **25-year limited warranty** when used as a complete system. See page 28 for warranty details.

PEX-A Potable Water Pipe

Natural Coils

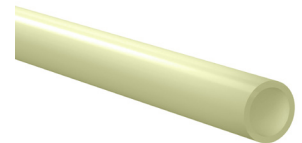


Part Code	Description	OD	Tolerance	Wall Thickness	Tolerance	Pallet Qty
F76782	1/2" x 100' Natural Pipe, Coil	0.625"	±0.004"	0.070"	+0.010"	32
F76783	1/2" x 300' Natural Pipe, Coil	0.625"	±0.004"	0.070"	+0.010"	23
F76784	1/2" x 500' Natural Pipe, Coil	0.625"	±0.004"	0.070"	+0.010"	15
F76785	1/2" x 1000' Natural Pipe, Coil	0.625"	±0.004"	0.070"	+0.010"	8
F76787	3/4" x 100' Natural Pipe, Coil	0.875"	±0.004"	0.097"	+0.010"	24
F76788	3/4" x 300' Natural Pipe, Coil	0.875"	±0.004"	0.097"	+0.010"	14
F76789	3/4" x 500' Natural Pipe, Coil	0.875"	±0.004"	0.097"	+0.010"	9
F76791	1" x 100' Natural Pipe, Coil	1.125"	±0.005"	0.125"	+0.013"	23
F76792	1" x 300' Natural Pipe, Coil	1.125"	±0.005"	0.125"	+0.013"	8
F76793	1" x 500' Natural Pipe, Coil	1.125"	±0.005"	0.125"	+0.013"	6
F76077	1-1/4" x 100' Natural Pipe, Coil	1.375"	±0.005"	0.153"	+0.015"	12
F76080	1-1/4" x 300' Natural Pipe, Coil	1.375"	±0.005"	0.153"	+0.015"	4
F76078	1-1/2" x 100' Natural Pipe, Coil	1.625"	±0.006"	0.181"	+0.019"	9
F76081	1-1/2" x 300' Natural Pipe, Coil	1.625"	±0.006"	0.181"	+0.019"	4
F76079	2" x 100' Natural Pipe, Coil	2.125"	±0.006"	0.236"	+0.024"	4
F76082	2" x 300' Natural Pipe, Coil	2.125"	±0.006"	0.236"	+0.024"	5

Product color may vary between natural and white pipe.

PEX-A Potable Water Pipe

Natural Straights



Part Code	Description	OD	Tolerance	Wall Thickness	Tolerance	Pallet Qty
F76781	1/2" x 20' Natural Pipe, Pack of 25 Straight Lengths	0.625"	±0.004"	0.070"	+0.010"	16
F76786	3/4" x 20' Natural Pipe, Pack of 15 Straight Lengths	0.875"	±0.004"	0.097"	+0.010"	16
F76790	1" x 20' Natural Pipe, Pack of 10 Straight Lengths	1.125"	±0.005"	0.125"	+0.013"	10
F76074	1-1/4" x 20' Natural Pipe, Pack of 5 Straight Lengths	1.375"	±0.005"	0.153"	+0.015"	10
F76075	1-1/2" x 20' Natural Pipe, Pack of 5 Straight Lengths	1.625"	±0.006"	0.181"	+0.019"	10
F76076	2" x 20' Natural Pipe, Pack of 5 Straight Lengths	2.125"	±0.006"	0.236"	+0.024"	10

Product color may vary between natural and white pipe.

PEX-A Potable Water Pipe Red Coils



Part Code	Description	OD	Tolerance	Wall Thickness	Tolerance	Pallet Qty
F76795	1/2" x 100' Red Pipe, Coil	0.625"	±0.004"	0.070"	+0.010"	32
F76796	1/2" x 300' Red Pipe, Coil	0.625"	±0.004"	0.070"	+0.010"	23
F76797	1/2" x 1000' Red Pipe, Coil	0.625"	±0.004"	0.070"	+0.010"	8
F76799	3/4" x 100' Red Pipe, Coil	0.875"	±0.004"	0.097"	+0.010"	24
F76800	3/4" x 300' Red Pipe, Coil	0.875"	±0.004"	0.097"	+0.010"	14
F76801	3/4" x 500' Red Pipe, Coil	0.875"	±0.004"	0.097"	+0.010"	9
F76803	1" x 100' Red Pipe, Coil	1.125"	±0.005"	0.125"	+0.013"	23
F76804	1" x 300' Red Pipe, Coil	1.125"	±0.005"	0.125"	+0.013"	8

PEX-A Potable Water Pipe Red Straights



Part Code	Description	OD	Tolerance	Wall Thickness	Tolerance	Pallet Qty
F76794	1/2" x 20' Red Pipe, Pack of 25 Straight Lengths	0.625"	±0.004"	0.070"	+0.010"	16
F76798	3/4" x 20' Red Pipe, Pack of 15 Straight Lengths	0.875"	±0.004"	0.097"	+0.010"	16
F76802	1" x 20' Red Pipe, Pack of 10 Straight Lengths	1.125"	±0.005"	0.125"	+0.013"	10

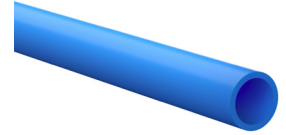
PEX-A Potable Water Pipe Blue Coils



Part Code	Description	OD	Tolerance	Wall Thickness	Tolerance	Pallet Qty
F76806	1/2" x 100' Blue Pipe, Coil	0.625"	±0.004"	0.070"	+0.010"	32
F76807	1/2" x 300' Blue Pipe, Coil	0.625"	±0.004"	0.070"	+0.010"	23
F76808	1/2" x 1000' Blue Pipe, Coil	0.625"	±0.004"	0.070"	+0.010"	8
F76810	3/4" x 100' Blue Pipe, Coil	0.875"	±0.004"	0.097"	+0.010"	24
F76811	3/4" x 300' Blue Pipe, Coil	0.875"	±0.004"	0.097"	+0.010"	14
F76812	3/4" x 500' Blue Pipe, Coil	0.875"	±0.004"	0.097"	+0.010"	9
F76814	1" x 100' Blue Pipe, Coil	1.125"	±0.005"	0.125"	+0.013"	23
F76815	1" x 300' Blue Pipe, Coil	1.125"	±0.005"	0.125"	+0.013"	8

PEX-A Potable Water Pipe

Blue Straights



Part Code	Description	OD	Tolerance	Wall Thickness	Tolerance	Pallet Qty
F76805	1/2" x 20' Blue Pipe, Pack of 25 Straight Lengths	0.625"	±0.004"	0.070"	+0.010"	16
F76809	3/4" x 20' Blue Pipe, Pack of 15 Straight Lengths	0.875"	±0.004"	0.097"	+0.010"	16
F76813	1" x 20' Blue Pipe, Pack of 10 Straight Lengths	1.125"	±0.005"	0.125"	+0.013"	10

PEX-A Oxygen Barrier Pipe

Natural Coils

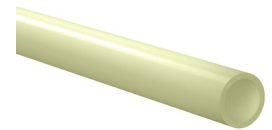


Part Code	Description	OD	Tolerance	Wall Thickness	Tolerance	Pallet Qty
F76818	1/2" x 100' Natural Pipe, Coil	0.625"	±0.004"	0.070"	+0.010"	32
F76819	1/2" x 300' Natural Pipe, Coil	0.625"	±0.004"	0.070"	+0.010"	23
F76820	1/2" x 500' Natural Pipe, Coil	0.625"	±0.004"	0.070"	+0.010"	15
F76821	1/2" x 1000' Natural Pipe, Coil	0.625"	±0.004"	0.070"	+0.010"	8
F76823	5/8" x 100' Natural Pipe, Coil	0.750"	±0.004"	0.083"	+0.010"	29
F76824	5/8" x 300' Natural Pipe, Coil	0.750"	±0.004"	0.083"	+0.010"	17
F76825	5/8" x 400' Natural Pipe, Coil	0.750"	±0.004"	0.083"	+0.010"	16
F76826	5/8" x 1000' Natural Pipe, Coil	0.750"	±0.004"	0.083"	+0.010"	6
F76827	3/4" x 100' Natural Pipe, Coil	0.875"	±0.004"	0.097"	+0.010"	24
F76828	3/4" x 300' Natural Pipe, Coil	0.875"	±0.004"	0.097"	+0.010"	14
F76829	3/4" x 500' Natural Pipe, Coil	0.875"	±0.004"	0.097"	+0.010"	9
F76830	3/4" x 1000' Natural Pipe, Coil	0.875"	±0.004"	0.097"	+0.010"	4
F76016	1-1/4" x 100' Natural Pipe, Coil	1.375"	±0.005"	0.161"	+0.015"	12
F76017	1-1/2" x 100' Natural Pipe, Coil	1.625"	±0.006"	0.191"	+0.019"	9
F76018	2" x 100' Natural Pipe, Coil	2.125"	±0.006"	0.248"	+0.024"	4

Product color may vary between natural and white pipe.

PEX-A Oxygen Barrier Pipe

Natural Straights



Part Code	Description	OD	Tolerance	Wall Thickness	Tolerance	Pallet Qty
F76817	1/2" x 20' Natural Pipe, Pack of 25 Straight Lengths	0.625"	±0.004"	0.070"	+0.010"	16
F76822	5/8" x 20' Natural Pipe, Pack of 15 Straight Lengths	0.750"	±0.004"	0.083"	+0.010"	22
F76083	3/4" x 20' Natural Pipe, Pack of 15 Straight Lengths	0.875"	±0.004"	0.097"	+0.010"	16
F76013	1-1/4" x 20' Natural Pipe, Pack of 5 Straight Lengths	1.375"	±0.005"	0.161"	+0.015"	10
F76014	1-1/2" x 20' Natural Pipe, Pack of 5 Straight Lengths	1.625"	±0.006"	0.191"	+0.019"	10
F76015	2" x 20' Natural Pipe, Pack of 5 Straight Lengths	2.125"	±0.006"	0.248"	+0.024"	10

Product color may vary between natural and white pipe.

PEX-B Potable Water Pipe White Coils



Part Code	Description	OD	Tolerance	Wall Thickness	Tolerance	Pallet Qty
C76903	1/2" x 100' White Pipe, Coil	0.625"	±0.004"	0.070"	+0.010"	104
C76906	1/2" x 300' White Pipe, Coil	0.625"	±0.004"	0.070"	+0.010"	26
C76909	1/2" x 500' White Pipe, Coil	0.625"	±0.004"	0.070"	+0.010"	17
C76900	1/2" x 1000' White Pipe, Coil	0.625"	±0.004"	0.070"	+0.010"	7
C76915	3/4" x 100' White Pipe, Coil	0.875"	±0.004"	0.097"	+0.010"	56
C76918	3/4" x 300' White Pipe, Coil	0.875"	±0.004"	0.097"	+0.010"	12
C76921	3/4" x 500' White Pipe, Coil	0.875"	±0.004"	0.097"	+0.010"	7
C76912	3/4" x 1000' White Pipe, Coil	0.875"	±0.004"	0.097"	+0.010"	4
C76924	1" x 100' White Pipe, Coil	1.125"	±0.005"	0.125"	+0.013"	15
C76927	1" x 300' White Pipe, Coil	1.125"	±0.005"	0.125"	+0.013"	9
C76930	1" x 500' White Pipe, Coil	1.125"	±0.005"	0.125"	+0.013"	10

PEX-B Potable Water Pipe White Straights



Part Code	Description	OD	Tolerance	Wall Thickness	Tolerance	Pallet Qty
C76933	1/2" x 10' White Pipe, Pack of 50 Straight Lengths	0.625"	±0.004"	0.070"	+0.010"	10
C76934	1/2" x 20' White Pipe, Pack of 50 Straight Lengths	0.625"	±0.004"	0.070"	+0.010"	10
C76937	3/4" x 10' White Pipe, Pack of 25 Straight Lengths	0.875"	±0.004"	0.097"	+0.010"	10
C76938	3/4" x 20' White Pipe, Pack of 25 Straight Lengths	0.875"	±0.004"	0.097"	+0.010"	10
C76942	1" x 20' White Pipe, Pack of 15 Straight Lengths	1.125"	±0.005"	0.125"	+0.013"	10

PEX-B Potable Water Pipe

Red Coils



Part Code	Description	OD	Tolerance	Wall Thickness	Tolerance	Pallet Qty
C76905	1/2" x 100' Red Pipe, Coil	0.625"	±0.004"	0.070"	+0.010"	104
C76908	1/2" x 300' Red Pipe, Coil	0.625"	±0.004"	0.070"	+0.010"	26
C76911	1/2" x 500' Red Pipe, Coil	0.625"	±0.004"	0.070"	+0.010"	17
C76902	1/2" x 1000' Red Pipe, Coil	0.625"	±0.004"	0.070"	+0.010"	7
C76917	3/4" x 100' Red Pipe, Coil	0.875"	±0.004"	0.097"	+0.010"	56
C76920	3/4" x 300' Red Pipe, Coil	0.875"	±0.004"	0.097"	+0.010"	12
C76923	3/4" x 500' Red Pipe, Coil	0.875"	±0.004"	0.097"	+0.010"	7
C76914	3/4" x 1000' Red Pipe, Coil	0.875"	±0.004"	0.097"	+0.010"	4
C76926	1" x 100' Red Pipe, Coil	1.125"	±0.005"	0.125"	+0.013"	15
C76929	1" x 300' Red Pipe, Coil	1.125"	±0.005"	0.125"	+0.013"	9
C76932	1" x 500' Red Pipe, Coil	1.125"	±0.005"	0.125"	+0.013"	10

PEX-B Potable Water Pipe

Red Straights



Part Code	Description	OD	Tolerance	Wall Thickness	Tolerance	Pallet Qty
C76936	1/2" x 20' Red Pipe, Pack of 50 Straight Lengths	0.625"	±0.004"	0.070"	+0.010"	10
C76940	3/4" x 20' Red Pipe, Pack of 25 Straight Lengths	0.875"	±0.004"	0.097"	+0.010"	10
C76941	1" x 20' Red Pipe, Pack of 15 Straight Lengths	1.125"	±0.005"	0.125"	+0.013"	10

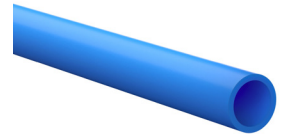


PEX-B Potable Water Pipe Blue Coils



Part Code	Description	OD	Tolerance	Wall Thickness	Tolerance	Pallet Qty
C76904	1/2" x 100' Blue Pipe, Coil	0.625"	±0.004"	0.070"	+0.010"	104
C76907	1/2" x 300' Blue Pipe, Coil	0.625"	±0.004"	0.070"	+0.010"	26
C76910	1/2" x 500' Blue Pipe, Coil	0.625"	±0.004"	0.070"	+0.010"	17
C76901	1/2" x 1000' Blue Pipe, Coil	0.625"	±0.004"	0.070"	+0.010"	7
C76916	3/4" x 100' Blue Pipe, Coil	0.875"	±0.004"	0.097"	+0.010"	56
C76919	3/4" x 300' Blue Pipe, Coil	0.875"	±0.004"	0.097"	+0.010"	12
C76922	3/4" x 500' Blue Pipe, Coil	0.875"	±0.004"	0.097"	+0.010"	7
C76913	3/4" x 1000' Blue Pipe, Coil	0.875"	±0.004"	0.097"	+0.010"	4
C76925	1" x 100' Blue Pipe, Coil	1.125"	±0.005"	0.125"	+0.013"	15
C76928	1" x 300' Blue Pipe, Coil	1.125"	±0.005"	0.125"	+0.013"	9
C76931	1" x 500' Blue Pipe, Coil	1.125"	±0.005"	0.125"	+0.013"	10

PEX-B Potable Water Pipe Blue Straights



Part Code	Description	OD	Tolerance	Wall Thickness	Tolerance	Pallet Qty
C76935	1/2" x 20' Blue Pipe, Pack of 50 Straight Lengths	0.625"	±0.004"	0.070"	+0.010"	10
C76939	3/4" x 20' Blue Pipe, Pack of 25 Straight Lengths	0.875"	±0.004"	0.097"	+0.010"	10
C76943	1" x 20' Blue Pipe, Pack of 15 Straight Lengths	1.125"	±0.005"	0.125"	+0.013"	10



F1960 Brass PEX Male Sweat Adapter



Part Code	Description	A	B	CTN/MSTR
F76836	1/2" F1960 Brass PEX Male Sweat Adapter	0.50"	0.50"	25/100
F76837	1/2" F1960 x 3/4" Male Brass PEX Sweat Adapter	0.50"	0.75"	25/100
F76838	3/4" F1960 x 1" Male Brass PEX Sweat Adapter	0.75"	1.00"	10/100
F76839	3/4" F1960 x 1/2" Male Brass PEX Sweat Adapter	0.75"	0.50"	25/100
F76840	3/4" F1960 Brass PEX Male Sweat Adapter	0.75"	0.75"	25/100
F76835	1" F1960 Brass PEX Male Sweat Adapter	1.00"	1.00"	10/100
F76089	1-1/4" F1960 Brass PEX Male Sweat Adapter	1.25"	1.25"	8/96

F1960 Brass PEX Female Sweat Adapter



Part Code	Description	A	B	CTN/MSTR
F76842	1/2" F1960 Brass PEX Female Sweat Adapter	0.50"	0.50"	25/100
F76843	1/2" F1960 x 3/4" Female Brass PEX Sweat Adapter	0.50"	0.75"	25/100
F76844	3/4" F1960 x 1" Female Brass PEX Sweat Adapter	0.75"	1.00"	10/100
F76845	3/4" F1960 x 1/2" Female Brass PEX Sweat Adapter	0.75"	0.50"	25/50
F76846	3/4" F1960 Brass PEX Female Sweat Adapter	0.75"	0.75"	25/100
F76841	1" F1960 Brass PEX Female Sweat Adapter	1.00"	1.00"	10/100
F76168	1-1/4" F1960 Brass PEX Female Sweat Adapter	1.25"	1.25"	8/96
F76169	1-1/2" F1960 Brass PEX Female Sweat Adapter	1.50"	1.50"	12/48
F76170	2" F1960 Brass PEX Female Sweat Adapter	2.00"	2.00"	6/24

F1960 x Brass PEX Copper Press Adapter



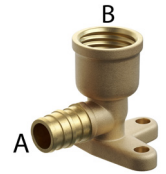
Part Code	Description	A	B	CTN/MSTR
F76092	1/2" F1960 x Brass PEX Copper Press Adapter, Bag of 30	0.63"	0.61"	30/240
F76093	3/4" F1960 x Brass PEX Copper Press Adapter, Bag of 20	0.89"	0.87"	20/160
F76094	1" F1960 x Brass PEX Copper Press Adapter, Bag of 12	1.13"	1.11"	12/96

F1960 Brass PEX 90° Elbow



Part Code	Description	A	B	CTN/MSTR
F76870	1/2" F1960 Brass PEX 90° Elbow	0.50"	0.50"	25/100
F76871	3/4" F1960 Brass PEX 90° Elbow	0.75"	0.75"	25/100
F76872	1" F1960 Brass PEX 90° Elbow	1.00"	1.00"	10/100

F1960 x FIP Brass PEX 90° Drop Ear Elbow



Part Code	Description	A	B	CTN/MSTR
F76833	1/2" F1960 x FIP Brass PEX 90° Drop Ear Elbow	0.50"	0.50"	25/100
F76834	3/4" F1960 x FIP Brass PEX 90° Drop Ear Elbow	0.75"	0.75"	4/100

F1960 x MIP Brass PEX 90° Elbow



Part Code	Description	A	B	CTN/MSTR
F76831	1/2" F1960 x MIP Brass PEX 90° Elbow	0.50"	0.50"	25/100

F1960 Brass PEX Coupling



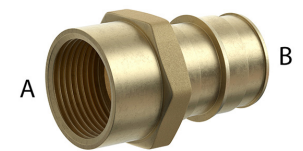
Part Code	Description	A	B	CTN/MSTR
F76854	1/2" F1960 Brass PEX Coupling	0.50"	0.50"	25/50
F76855	1/2" x 3/4" F1960 Brass PEX Coupling	0.50"	0.75"	25/50
F76891	5/8" F1960 PEX Brass Coupling	0.62"	0.62"	30/120
F76856	3/4" x 1" F1960 Brass PEX Coupling	0.75"	1.00"	10/50
F76857	3/4" F1960 Brass PEX Coupling	0.75"	0.75"	25/50
F76853	1" F1960 Brass PEX Coupling	1.00"	1.00"	10/100

F1960 x MIP Brass PEX Adapter



Part Code	Description	A	B	CTN/MSTR
F76849	1/2" F1960 x MIP Brass PEX Adapter	0.50"	0.50"	25/100
F76850	1/2" F1960 x 3/4" MIP Brass PEX Adapter	0.50"	0.75"	25/100
F76851	3/4" F1960 x 1" MIP Brass PEX Adapter	0.75"	1.00"	10/100
F76852	3/4" F1960 x MIP Brass PEX Adapter	0.75"	0.75"	25/100
F76847	1" F1960 x MIP Brass PEX Adapter	1.00"	1.00"	10/100
F76848	1" F1960 x 3/4" MIP Brass PEX Adapter	1.00"	0.75"	10/100
F76165	1-1/4" F1960 x MIP Brass PEX Adapter	1.25"	1.25"	6/72
F76166	1-1/2" F1960 x MIP Brass PEX Adapter	1.50"	1.50"	6/48
F76167	2" F1960 x MIP Brass PEX Adapter	2.00"	2.00"	6/24

F1960 x FIP Brass PEX Adapter



Part Code	Description	A	B	CTN/MSTR
F76859	1/2" F1960 x FIP Brass PEX Adapter	0.50"	0.50"	25/100
F76860	1/2" F1960 x 3/4" FIP Brass PEX Adapter	0.50"	0.75"	25/100
F76861	3/4" F1960 x 1" FIP Brass PEX Adapter	0.75"	1.00"	10/100
F76862	3/4" F1960 x FIP Brass PEX Adapter	0.75"	0.75"	25/100
F76858	1" F1960 x FIP Brass PEX Adapter	1.00"	1.00"	10/50
F76171	1-1/4" F1960 x FIP Brass PEX Adapter	1.25"	1.25"	6/72
F76172	1-1/2" F1960 x FIP Brass PEX Adapter	1.50"	1.50"	6/48
F76173	2" F1960 x FIP Brass PEX Adapter	2.00"	2.00"	6/36

F1960 Brass PEX Tee



Part Code	Description	A	B	C	CTN/MSTR
F76866	1/2" F1960 Brass PEX Tee	0.50"	0.50"	0.50"	25/100
F76868	3/4" F1960 Brass PEX Tee	0.75"	0.75"	0.75"	25/100
F76904	1" F1960 Brass PEX Tee	1.00"	1.00"	1.00"	10/60

F1960 Brass PEX Reducing Tee



Part Code	Description	A	B	C	CTN/MSTR
F76905	1/2" x 1/2" x 3/4" F1960 Brass PEX Reducing Tee	0.50"	0.50"	0.75"	25/150
F76906	3/4" x 1/2" x 1/2" F1960 Brass PEX Reducing Tee	0.75"	0.50"	0.50"	25/150
F76913	3/4" x 1/2" x 3/4" F1960 Brass PEX Reducing Tee	0.75"	0.50"	0.75"	25/150
F76867	3/4" x 3/4" x 1/2" F1960 Brass PEX Reducing Tee	0.75"	0.75"	0.50"	25/100
F76869	3/4" x 3/4" x 1" F1960 Brass PEX Reducing Tee	0.75"	0.75"	1.00"	10/100
F76896	1" x 1/2" x 1" F1960 Brass PEX Reducing Tee	1.00"	0.50"	1.00"	10/80
F76898	1" x 3/4" x 3/4" F1960 Brass PEX Reducing Tee	1.00"	0.75"	0.75"	10/100
F76897	1" x 3/4" x 1" F1960 Brass PEX Reducing Tee	1.00"	0.75"	1.00"	10/80
F76903	1" x 3/4" x 1/2" F1960 Brass PEX Reducing Tee	1.00"	0.75"	0.50"	10/100
F76894	1" x 1" x 1/2" F1960 Brass PEX Reducing Tee	1.00"	1.00"	0.50"	10/100
F76895	1" x 1" x 3/4" F1960 Brass PEX Reducing Tee	1.00"	1.00"	0.75"	10/80

F1960 Brass PEX Plug



Part Code	Description	CTN/MSTR
F76900	1/2" F1960 Brass PEX Plug	25/600
F76901	3/4" F1960 Brass PEX Plug	25/350
F76902	1" F1960 Brass PEX Plug	10/200

F1960 Poly PEX 45° Elbow



Part Code	Description	A	B	CTN/MSTR
F76024	1-1/2" F1960 Poly PEX 45° Elbow	1.50"	1.50"	10/40
F76025	2" F1960 Poly PEX 45° Elbow	2.00"	2.00"	5/20

F1960 Poly PEX 90° Elbow



Part Code	Description	A	B	CTN/MSTR
F76751	1/2" F1960 Poly PEX 90° Elbow	0.50"	0.50"	25/600
F76752	3/4" F1960 Poly PEX 90° Elbow	0.75"	0.75"	25/200
F76753	1" F1960 Poly PEX 90° Elbow	1.00"	1.00"	10/100
F76021	1-1/4" F1960 Poly PEX 90° Elbow	1.25"	1.25"	10/70
F76022	1-1/2" F1960 Poly PEX 90° Elbow	1.50"	1.50"	10/40
F76023	2" F1960 Poly PEX 90° Elbow	2.00"	2.00"	10/20

F1960 Poly PEX Coupling



Part Code	Description	A	B	CTN/MSTR
F76754	1/2" F1960 Poly PEX Coupling	0.50"	0.50"	25/1000
F76755	3/4" F1960 Poly PEX Coupling	0.75"	0.75"	25/500
F76756	3/4" x 1/2" F1960 Poly PEX Coupling	0.75"	0.50"	25/400
F76779	1" F1960 Poly PEX Coupling	1.00"	1.00"	10/250
F76758	1" x 3/4" F1960 Poly PEX Coupling	1.00"	0.75"	25/300
F76026	1-1/4" F1960 Poly PEX Coupling	1.25"	1.25"	10/160
F76030	1-1/4" x 3/4" F1960 Poly PEX Coupling	1.25"	0.75"	10/190
F76029	1-1/4" x 1" F1960 Poly PEX Coupling	1.25"	1.00"	10/170
F76027	1-1/2" F1960 Poly PEX Coupling	1.50"	1.50"	10/100
F76033	1-1/2" x 3/4" F1960 Poly PEX Coupling	1.50"	0.75"	10/140
F76031	1-1/2" x 1-1/4" F1960 Poly PEX Coupling	1.50"	1.25"	10/110
F76032	1-1/2" x 1" F1960 Poly PEX Coupling	1.50"	1.00"	10/120
F76028	2" F1960 Poly PEX Coupling	2.00"	2.00"	10/40
F76034	2" x 1-1/2" F1960 Poly PEX Coupling	2.00"	1.50"	10/40

F1960 Poly PEX Tee



Part Code	Description	A	B	C	CTN/MSTR
F76762	1/2" F1960 Poly PEX Tee	0.50"	0.50"	0.50"	25/400
F76763	3/4" F1960 Poly PEX Tee	0.75"	0.75"	0.75"	25/200
F76773	1" F1960 Poly PEX Tee	1.00"	1.00"	1.00"	10/100
F76035	1-1/4" F1960 Poly PEX Tee	1.25"	1.25"	1.25"	10/40
F76036	1-1/2" F1960 Poly PEX Tee	1.50"	1.50"	1.50"	10/20
F76037	2" F1960 Poly PEX Tee	2.00"	2.00"	2.00"	5/10

F1960 Poly PEX Reducing Tee



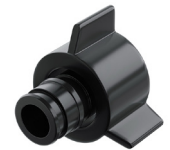
Part Code	Description	A	B	C	CTN/MSTR
F76764	1/2" x 1/2" x 3/4" F1960 Poly PEX Reducing Tee	0.50"	0.50"	0.75"	25/250
F76765	3/4" x 1/2" x 1/2" F1960 Poly PEX Reducing Tee	0.75"	0.50"	0.50"	25/300
F76766	3/4" x 1/2" x 3/4" F1960 Poly PEX Reducing Tee	0.75"	0.50"	0.75"	25/250
F76767	3/4" x 3/4" x 1/2" F1960 Poly PEX Reducing Tee	0.75"	0.75"	0.50"	25/100
F76772	1" x 3/4" x 3/4" F1960 Poly PEX Reducing Tee	1.00"	0.75"	0.75"	10/100
F76774	3/4" x 3/4" x 1" F1960 Poly PEX Reducing Tee	0.75"	0.75"	1.00"	10/100
F76776	1" x 3/4" x 1" F1960 Poly PEX Reducing Tee	1.00"	0.75"	1.00"	10/100
F76770	1" x 1" x 1/2" F1960 Poly PEX Reducing Tee	1.00"	1.00"	0.50"	10/100
F76775	1" x 1" x 3/4" F1960 Poly PEX Reducing Tee	1.00"	1.00"	0.75"	10/100
F76045	1-1/4" x 3/4" x 1-1/4" F1960 Poly PEX Reducing Tee	1.25"	0.75"	1.25"	10/40
F76044	1-1/4" x 1" x 3/4" F1960 Poly PEX Reducing Tee	1.25"	1.00"	0.75"	10/60
F76043	1-1/4" x 1" x 1" F1960 Poly PEX Reducing Tee	1.25"	1.00"	1.00"	10/50
F76042	1-1/4" x 1-1/4" x 1/2" F1960 Poly PEX Reducing Tee	1.25"	1.25"	0.50"	10/70
F76041	1-1/4" x 1-1/4" x 3/4" F1960 Poly PEX Reducing Tee	1.25"	1.25"	0.75"	10/60
F76040	1-1/4" x 1-1/4" x 1" F1960 Poly PEX Reducing Tee	1.25"	1.25"	1.00"	10/50
F76056	1-1/2" x 3/4" x 1-1/2" F1960 Poly PEX Reducing Tee	1.50"	0.75"	1.50"	10/30
F76055	1-1/2" x 1" x 3/4" F1960 Poly PEX Reducing Tee	1.50"	1.00"	0.75"	10/50
F76054	1-1/2" x 1" x 1" F1960 Poly PEX Reducing Tee	1.50"	1.00"	1.00"	10/40
F76053	1-1/2" x 1" x 1-1/2" F1960 Poly PEX Reducing Tee	1.50"	1.00"	1.50"	10/30
F76052	1-1/2" x 1-1/4" x 3/4" F1960 Poly PEX Reducing Tee	1.50"	1.25"	0.75"	10/40
F76051	1-1/2" x 1-1/4" x 1" F1960 Poly PEX Reducing Tee	1.50"	1.25"	1.00"	10/40
F76050	1-1/2" x 1-1/4" x 1-1/4" F1960 Poly PEX Reducing Tee	1.50"	1.25"	1.25"	10/30
F76048	1-1/2" x 1-1/2" x 3/4" F1960 Poly PEX Reducing Tee	1.50"	1.50"	0.75"	10/40

F1960 Poly PEX Reducing Tee (Cont.)



Part Code	Description	A	B	C	CTN/MSTR
F76047	1-1/2" x 1-1/2" x 1" F1960 Poly PEX Reducing Tee	1.50"	1.50"	1.00"	10/30
F76046	1-1/2" x 1-1/2" x 1-1/4" F1960 Poly PEX Reducing Tee	1.50"	1.50"	1.25"	10/30
F76049	1-1/2" x 1-1/2" x 1/2" F1960 Poly PEX Reducing Tee	1.50"	1.50"	0.50"	10/50
F76067	2" x 1-1/2" x 1/2" F1960 Poly PEX Reducing Tee	2.00"	1.50"	0.50"	5/25
F76066	2" x 1-1/2" x 3/4" F1960 Poly PEX Reducing Tee	2.00"	1.50"	0.75"	10/20
F76065	2" x 1-1/2" x 1" F1960 Poly PEX Reducing Tee	2.00"	1.50"	1.00"	10/20
F76064	2" x 1-1/2" x 1-1/4" F1960 Poly PEX Reducing Tee	2.00"	1.50"	1.25"	5/15
F76063	2" x 1-1/2" x 1-1/2" F1960 Poly PEX Reducing Tee	2.00"	1.50"	1.50"	5/15
F76062	2" x 1-1/2" x 2" F1960 Poly PEX Reducing Tee	2.00"	1.50"	2.00"	10/10
F76061	2" x 2" x 1/2" F1960 Poly PEX Reducing Tee	2.00"	2.00"	0.50"	20/20
F76060	2" x 2" x 3/4" F1960 Poly PEX Reducing Tee	2.00"	2.00"	0.75"	10/20
F76059	2" x 2" x 1" F1960 Poly PEX Reducing Tee	2.00"	2.00"	1.00"	5/20
F76057	2" x 2" x 1-1/2" F1960 Poly PEX Reducing Tee	2.00"	2.00"	1.50"	5/15
F76058	2" x 2" x 1-1/4" F1960 Poly PEX Reducing Tee	2.00"	2.00"	1.25"	5/15

F1960 Poly PEX Swivel Faucet Adapter



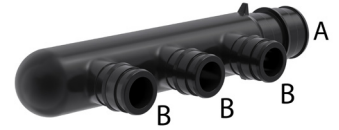
Part Code	Description	CTN/MSTR
F76780	1/2" F1960 Poly PEX Swivel Faucet Adapter	25/400

F1960 Poly PEX Manifold Open End



Part Code	Description	A	B	CTN/MSTR
F76001	3/4" F1960 Poly PEX Manifold, 2-Port	0.75"	0.50"	10/140
F76002	3/4" F1960 Poly PEX Manifold, 3-Port	0.75"	0.50"	10/100
F76006	3/4" F1960 Poly PEX Manifold, 4-Port	0.75"	0.50"	10/100
F76007	3/4" F1960 Poly PEX Manifold, 6-Port	0.75"	0.50"	10/70

F1960 Poly PEX Manifold Closed End



Part Code	Description	A	B	CTN/MSTR
F76005	3/4" F1960 Poly PEX Manifold, 3-Port	0.75"	0.50"	10/140
F76004	3/4" F1960 Poly PEX Manifold, 4-Port	0.75"	0.50"	10/100
F76003	3/4" F1960 Poly PEX Manifold, 6-Port	0.75"	0.50"	10/60
F76009	1" F1960 Poly PEX Manifold, 4-Port	1.00"	0.50"	10/70
F76008	1" F1960 Poly PEX Manifold, 6-Port	1.00"	0.50"	10/60

F1960 Poly PEX Plug



Part Code	Description	CTN/MSTR
F76768	1/2" F1960 Poly PEX Plug	25/1500
F76769	3/4" F1960 Poly PEX Plug	25/1500
F76771	1" F1960 Poly PEX Plug	10/300
F76068	1-1/4" F1960 Poly PEX Plug	10/280
F76069	1-1/2" F1960 Poly PEX Plug	10/180
F76070	2" F1960 Poly PEX Plug	10/80

PEX Expansion Ring



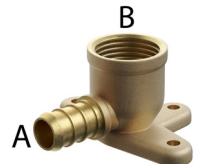
Part Code	Description	CTN/MSTR
F76909	1/2" F1960 PEX Ring with Stop	50/4000
F76910	5/8" F1960 PEX Ring with Stop	50/3000
F76911	3/4" F1960 PEX Ring with Stop	40/2000
F76912	1" F1960 PEX Ring with Stop	25/1000
F76071	1-1/4" F1960 PEX Ring with Stop	20/500
F76072	1-1/2" F1960 PEX Ring with Stop	8/360
F76073	2" F1960 PEX Ring with Stop	5/150

F1807 Brass PEX 90° Elbow



Part Code	Description	A	B	CTN/MSTR
C76008LF	1/2" F1807 Brass PEX 90° Elbow	0.50	0.50	100/800
C76009LF	3/4" F1807 Brass PEX 90° Elbow	0.75	0.75	50/250
C76091LF	3/4" x 1/2" F1807 Brass PEX 90° Elbow	0.75	0.50	50/200
C76010LF	1" F1807 Brass PEX 90° Elbow	1.00	1.00	25/100

F1807 x FIP Brass PEX 90° Drop Ear Elbow



Part Code	Description	A	B	CTN/MSTR
C76079LF	1/2" F1807 x FIP Brass PEX 90° Drop Ear Elbow	0.50"	0.50"	25/200
C76080LF	1/2" F1807 x FIP Brass PEX 90° Drop Ear Elbow	0.50"	0.50"	25/200
C76090LF	3/4" F1807 x FIP Brass PEX 90° Drop Ear Elbow	0.75"	0.75"	5/50
C76081LF	3/4" F1807 x 1/2" FIP Brass PEX 90° Drop Ear Elbow	0.75"	0.50"	25/200

F1807 x FIP Brass PEX 90° Elbow with Poly Swivel Nut



Part Code	Description	CTN/MSTR
C76060LF	1/2" F1807 x FIP Brass PEX 90° Elbow with Poly Swivel Nut	50/200

F1807 x MIP Brass PEX 90° Elbow



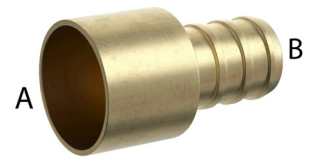
Part Code	Description	A	B	CTN/MSTR
C76013LF	1/2" F1807 x MIP Brass PEX 90° Elbow	0.50"	0.50"	50/400

F1807 Brass PEX Coupling



Part Code	Description	A	B	CTN/MSTR
C76001LF	1/2" F1807 Brass PEX Coupling	0.50"	0.50"	100/1000
C76002LF	3/4" F1807 Brass PEX Coupling	0.75"	0.75"	50/500
C76004LF	3/4" x 1/2" F1807 Brass PEX Coupling	0.75"	0.50"	50/500
C76003LF	1" F1807 Brass PEX Coupling	1.00"	1.00"	25/300
C76005LF	1" x 3/4" F1807 Brass PEX Coupling	1.00"	0.75"	50/400

F1807 Brass PEX Male Sweat Adapter



Part Code	Description	A	B	CTN/MSTR
C76048LF	1/2" F1807 Brass PEX Male Sweat Adapter	0.50"	0.50"	100/1000
C76049LF	1/2" F1807 x 3/4" Male Brass PEX Sweat Adapter	0.50"	0.75"	25/100
C76047LF	3/8" F1807 x 1/2" Male Brass PEX Sweat Adapter	0.37"	0.50"	50/500
C76050LF	3/4" F1807 Brass PEX Male Sweat Adapter	0.75"	0.75"	50/400
C76051LF	1" F1807 Brass PEX Male Sweat Adapter	1.00"	1.00"	25/100

F1807 Brass PEX Female Sweat Adapter



Part Code	Description	A	B	CTN/MSTR
C76027LF	1/2" F1807 Brass PEX Female Sweat Adapter	0.50"	0.50"	50/1000
C76029LF	1/2" F1807 x 3/4" Female Brass PEX Sweat Adapter	0.50"	0.75"	50/250
C76028LF	3/4" F1807 Brass PEX Female Sweat Adapter	0.75"	0.75"	25/400
C76030LF	1" F1807 Brass PEX Female Sweat Adapter	1.00"	1.00"	25/200

F1807 x MIP Brass PEX Adapter



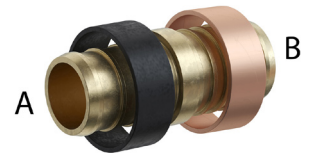
Part Code	Description	A	B	CTN/MSTR
C76034LF	1/2" F1807 x MIP Brass PEX Adapter	0.50"	0.50"	25/400
C76035LF	1/2" F1807 x 3/4" MIP Brass PEX Adapter	0.50"	0.75"	25/200
C76036LF	3/4" F1807 x MIP Brass PEX Adapter	0.75"	0.75"	50/250
C76082LF	3/4" F1807 x 1/2" MIP Brass PEX Adapter	0.75"	0.50"	50/250
C76037LF	1" F1807 x MIP Brass PEX Adapter	1.00"	1.00"	25/150
C76038LF	1" F1807 x 3/4" MIP Brass PEX Adapter	1.00"	0.75"	25/200

F1807 x FIP Brass PEX Adapter



Part Code	Description	A	B	CTN/MSTR
C76041LF	1/2" F1807 x FIP Brass PEX Adapter	0.50"	0.50"	50/250
C76042LF	1/2" F1807 x 3/4" FIP Brass PEX Adapter	0.50"	0.75"	25/250
C76043LF	3/4" F1807 x FIP Brass PEX Adapter	0.75"	0.75"	25/200
C76044LF	1" F1807 x FIP Brass PEX Adapter	1.00"	1.00"	25/250

F1807 Brass PEX to Poly Adapter



Part Code	Description	A	B	CTN/MSTR
C76100LF	1/2" F1807 Brass PEX to Poly Adapter	0.50"	0.50"	25/500
C76101LF	3/4" F1807 Brass PEX to Poly Adapter	0.75"	0.75"	25/300

F1807 Brass PEX Tee



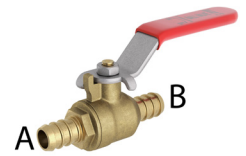
Part Code	Description	A	B	C	CTN/MSTR
C76014LF	1/2" F1807 Brass PEX Tee	0.50"	0.50"	0.50"	50/500
C76015LF	3/4" F1807 Brass PEX Tee	0.75"	0.75"	0.75"	50/300
C76016LF	1" F1807 Brass PEX Tee	1.00"	1.00"	1.00"	25/100

F1807 Brass PEX Reducing Tee



Part Code	Description	A	B	C	CTN/MSTR
C76017LF	1/2" x 1/2" x 3/4" F1807 Brass PEX Reducing Tee	0.50"	0.50"	0.75"	50/300
C76018LF	3/4" x 1/2" x 1/2" F1807 Brass PEX Reducing Tee	0.75"	0.50"	0.50"	25/250
C76019LF	3/4" x 1/2" x 3/4" F1807 Brass PEX Reducing Tee	0.75"	0.50"	0.75"	25/250
C76020LF	3/4" x 3/4" x 1/2" F1807 Brass PEX Reducing Tee	0.75"	0.75"	0.50"	25/250
C76021LF	1" x 3/4" x 3/4" F1807 Brass PEX Reducing Tee	1.00"	0.75"	0.75"	25/200
C76022LF	1" x 1" x 1/2" F1807 Brass PEX Reducing Tee	1.00"	1.00"	0.50"	25/100
C76023LF	1" x 1" x 3/4" F1807 Brass PEX Reducing Tee	1.00"	1.00"	0.75"	25/200

F1807 Brass PEX Ball Valve



Part Code	Description	A	B	CTN/MSTR
B63050LF	1/2" F1807 Brass PEX Ball Valve	0.50"	0.50"	10/120
B63075LF	3/4" F1807 Brass PEX Ball Valve	0.75"	0.75"	10/80
B63100LF	1" F1807 Brass PEX Ball Valve	1.00"	1.00"	6/48

F1807 Brass PEX Plug



Part Code	Description	CTN/MSTR
C76065LF	1/2" F1807 Brass PEX Plug	100/1000
C76066LF	3/4" F1807 Brass PEX Plug	100/800
C76067LF	1" F1807 Brass PEX Plug	50/500

PEX Crimp Ring

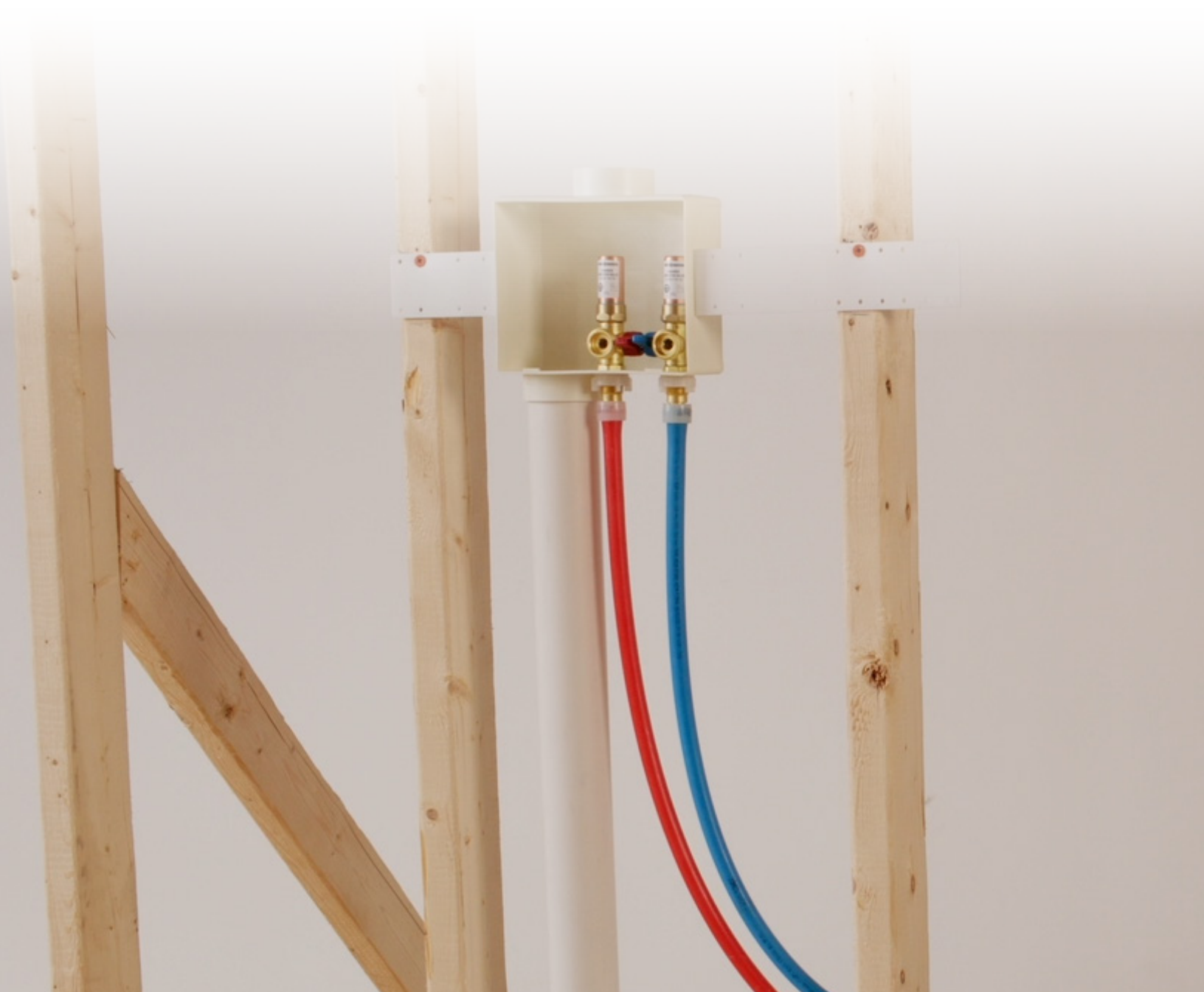


Part Code	Description	CTN/MSTR
C76070	3/8" PEX Ring	100/2000
C76071	1/2" PEX Ring	100/2000
C76072	3/4" PEX Ring	100/2000
C76073	1" PEX Ring	100/1000

Oetiker Stainless Steel PEX Clamp



Part Code	Description	CTN/MSTR
C76074	3/8" Oetiker Stainless Steel PEX Clamp	100/2000
C76075	1/2" Oetiker Stainless Steel PEX Clamp	100/2000
C76076	3/4" Oetiker Stainless Steel PEX Clamp	50/2000
C76077	1" Oetiker Stainless Steel PEX Clamp	50/1000



F2159 Poly PEX 90° Elbow



Part Code	Description	A	B	CTN/MSTR
C76751	1/2" F2159 Poly PEX 90° Elbow	0.50"	0.50"	50/500
C76752	3/4" F2159 Poly PEX 90° Elbow	0.75"	0.75"	25/350
C76753	1" F2159 Poly PEX 90° Elbow	1.00"	1.00"	10/150

F2159 Poly PEX Coupling



Part Code	Description	A	B	CTN/MSTR
C76754	1/2" F2159 Poly PEX Coupling	0.50"	0.50"	50/1000
C76755	3/4" F2159 Poly PEX Coupling	0.75"	0.75"	50/600
C76756	3/4" x 1/2" F2159 Poly PEX Coupling	0.75"	0.50"	50/600
C76757	1" F2159 Poly PEX Coupling	1.00"	1.00"	25/200
C76758	1" x 3/4" F2159 Poly PEX Coupling	1.00"	0.75"	25/300

F2159 x MIP Poly PEX Adapter



Part Code	Description	A	B	CTN/MSTR
C76759	1/2" F2159 x MIP Poly PEX Adapter	0.50"	0.50"	50/500
C76760	3/4" F2159 x MIP Poly PEX Adapter	0.75"	0.75"	25/300
C76761	1" F2159 x MIP Poly PEX Adapter	1.00"	1.00"	10/150

F2159 Poly PEX Tee



Part Code	Description	A	B	C	CTN/MSTR
C76762	1/2" F2159 Poly PEX Tee	0.50"	0.50"	0.50"	50/400
C76763	3/4" F2159 Poly PEX Tee	0.75"	0.75"	0.75"	25/200
C76773	1" F2159 Poly PEX Tee	1.00"	1.00"	1.00"	50/200

F2159 Poly PEX Reducing Tee



Part Code	Description	A	B	C	CTN/MSTR
C76764	1/2" x 1/2" x 3/4" F2159 Poly PEX Reducing Tee	0.50"	0.50"	0.75"	25/300
C76765	3/4" x 1/2" x 1/2" F2159 Poly PEX Reducing Tee	0.75"	0.75"	0.50"	25/300
C76766	3/4" x 1/2" x 3/4" F2159 Poly PEX Reducing Tee	0.75"	0.50"	0.75"	25/300
C76767	3/4" x 3/4" x 1/2" F2159 Poly PEX Reducing Tee	0.75"	0.75"	0.50"	25/300
C76774	3/4" x 3/4" x 1" F2159 Poly PEX Reducing Tee	0.75"	0.75"	1.00"	25/100
C76772	1" x 3/4" x 3/4" F2159 Poly PEX Reducing Tee	1.00"	0.75"	0.75"	25/300
C76770	1" x 1" x 1/2" F2159 Poly PEX Reducing Tee	1.00"	1.00"	0.50"	25/300
C76775	1" x 1" x 3/4" F2159 Poly PEX Reducing Tee	1.00"	1.00"	0.75"	25/300

F2159 Poly PEX Plug



Part Code	Description	CTN/MSTR
C76768	1/2" F2159 Poly PEX Plug	100/2000
C76769	3/4" F2159 Poly PEX Plug	100/1000
C76771	1" F2159 Poly PEX Plug	100/1000



PEX Crimp Tool



Part Code	Description	CTN/MSTR
J40950	PEX Crimp Set with 3/8", 1/2", 3/4" Tools	1/5
J40952	1/2" PEX Crimp Tool	1/10
J40953	3/4" PEX Crimp Tool	1/10
J40954	1" PEX Crimp Tool	1/10

Oetiker Crimp Tool



Part Code	Description	CTN/MSTR
J40967	Oetiker® 3-Handle Ratcheting Crimp Tool	1/1

PEX Pipe Cutter



Part Code	Description	CTN/MSTR
P70030	Vinyl Tubing Cutter	12/72
P70031	Replacement Blade for Vinyl Tubing Cutter P70030	50/500

PEX Clamp Tool

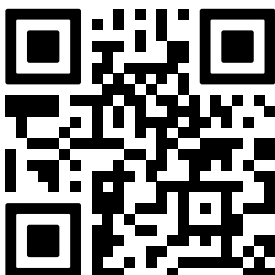


Part Code	Description	CTN/MSTR
J40965	One Hand PEX Stainless Steel Clamp Tool	1/20
J40966	PEX Stainless Steel Clamp Tool	1/30

Jones Stephens' PlumBite® Fittings

Jones Stephens' PlumBite Push-On Fittings are compatible with the Jones Stephens PEX plumbing system. Designed to connect tubing with ease, PlumBites do not require soldering, glue, heat or external tools to join the pipe.

Scan the QR code to View the complete Jones Stephens' PlumBite® offering.



PEX Tubing & Fitting Limited Warranty

Subject to the terms and conditions of this Limited Warranty (“Warranty”), Jones Stephens (“Jones Stephens”) warrants to the owner of the applicable real property in the United States that the Jones Stephens products listed below shall be free from defects in material and workmanship, under normal conditions of use when installed as part of the application listed below.

PEX-A Scope

The scope of this Warranty includes Jones Stephens PEX-A Tubing and Fittings. When installed in combination with one another, Jones Stephens PEX-A Tubing and Jones Stephens PEX Fittings (F1807 and F2159 Crimp Fittings & F1960 Cold Expansion Fittings) form a Jones Stephens System (“System”). The terms of this Warranty depend on whether the Jones Stephens products are installed as a System or if the Jones Stephens products are installed in conjunction with non-Jones Stephens products. The Term of Warranty begins on the Commencement Date, defined as the date on which the applicable Jones Stephens products are installed in a building or facility. The Term of Warranty is shown in the column below:

Product Category	When used in combination with	Term of Warranty
Jones Stephens PEX-A Tubing	Jones Stephens fittings	25 years
	Non-Jones Stephens fittings	11 years
Jones Stephens PEX Fittings (F1807, F2159 & F1960)	Jones Stephens PEX-A Tubing	25 years
	Non-Jones Stephens Tubing	1 year

PEX-B Scope

The scope of this Warranty includes Jones Stephens PEX-B Tubing and Fittings. When installed in combination with one another, Jones Stephens PEX-B Tubing and Jones Stephens PEX Fittings (F1807 and F2159 Crimp Fittings) form a Jones Stephens System (“System”). The terms of this Warranty depend on whether the Jones Stephens products are installed as a System or if the Jones Stephens products are installed in conjunction with non-Jones Stephens products. The Term of Warranty begins on the date on which the applicable Jones Stephens products are installed in a building or facility. The Term of Warranty is shown in the column below:

Product Category	When used in combination with	Term of Warranty
Jones Stephens PEX-B Tubing	Jones Stephens fittings	25 years
	Non-Jones Stephens fittings	11 years
Jones Stephens PEX Fittings (F2159 & F1807)	Jones Stephens PEX-B Tubing	25 years
	Non-Jones Stephens Tubing	1 year

Visit jonesstephens.com to view the complete warranty details.

PEX Plumbing System Training

Looking for training on Jones Stephens' PEX Plumbing System? While you do not need to be certified to install Jones Stephens' PEX pipe and fittings, our sales representatives are glad to provide in-person training on our products, features, certifications, installation details, and more.

If you would like to be trained on product features and general installation requirements, please contact your local sales representative.



Scan the QR Code to view the full offering and additional information on our website.

