

JONES STEPHENS

PEX-A PIPING SOLUTIONS



PEX-A PIPING

F1960 FITTINGS

F1807 FITTINGS

F2159 FITTINGS

PRODUCT CATALOG



Jones Stephens PEX-A Piping System



Our comprehensive offering includes PEX-A pipe for potable water and oxygen barrier applications, as well as cold expansion and crimp-style fittings. Jones Stephens PEX-A Piping System solutions are certified and approved to meet industry standards and are manufactured with the highest-quality materials.

PEX-A Pipe for Potable Water and Oxygen Barrier Pipe:

- NSF certified to ASTM F876/877 and CSA B137.5- 2017/2011a per NSF/ANSI 14, 61 and 372
- ANSI/NSF14 and ANSI/NSF 61 approved
- ASTM E84, ASTM F876, ASTM F877, ASTM F1960, ASTM F2023, ASTM E814, and ASTM E119/UL 263 approved
- CAN/ULC S101 and ULC S102.2 approved
- CSA B214 approved
- AWWA C904 approved

F1960 Brass Cold Expansion Fittings:

- Tested and certified to ASTM F1960
- Certified to CSA B137.5-2020
- Certified to NSF/ANSI/CAN 61- 2019, NSF/ANSI 372-2016, and NSF/ANSI 14-2015
- cUPC Listed

F1960 Polymer Cold Expansion Fittings:

- Tested and certified to ASTM F1960 and ASTM F877-2020
- Certified to CSA B137.5-2020 and CSA B137.5-2017
- Certified to NSF/ANSI/CAN 61-2018, NSF/ANSI 14-2016, and NSF/ANSI 372-2011
- cUPC Listed

F1807 Brass Crimp Fittings:

- Certified to IAPMO IGC 319-2016 and CSA B137.5-2020
- Certified to NSF/ANSI 372-2016, NSF/ANSI 61-2017, and NSF/ANSI 14-2016a
- Certified to ASTM F1807-2019b and CSA B137.5-2017
- NSF/ANSI/CAN 61-2019
- cUPC Listed

F2159 Polymer Crimp Fittings:

- Certified to ASTM F2159-2014 and CSA B137.5-2013
- Certified to ASTM F877-2020 and CSA B137.5-2017
- Certified to NSF/ANSI 14-2015, NSF/ANSI 14-2016a, and NSF/ANSI 372-2011
- Certified to NSF/ANSI/CAN 61-2019
- cUPC listed

Jones Stephens backs our PEX-A plumbing system with a **25-year limited warranty**.

Jones Stephens' **PEX-A pipe** is manufactured of crosslinked polyethylene and is available for potable water or oxygen barrier applications. Red, White and Blue colored coils and sticks are available to meet your specific installation needs.



While copper can corrode with mineral build up, PEX-A pipe is **corrosion resistant** – increasing the durability of the system.



With its superior, durable crosslinking pattern, PEX-A pipe is **highly flexible**.



Copper and CVPC systems can burst in freezing temperatures, costing the installer thousands. PEX-A pipe **expands when freezing** to resist damage.



PEX-A pipe creates less kinking and requires less fittings compared to alternate piping methods, making installation **simple and saving the installer time and energy**.



PEX-A pipe expands to absorb sound from water hammer – providing **quiet operation**.

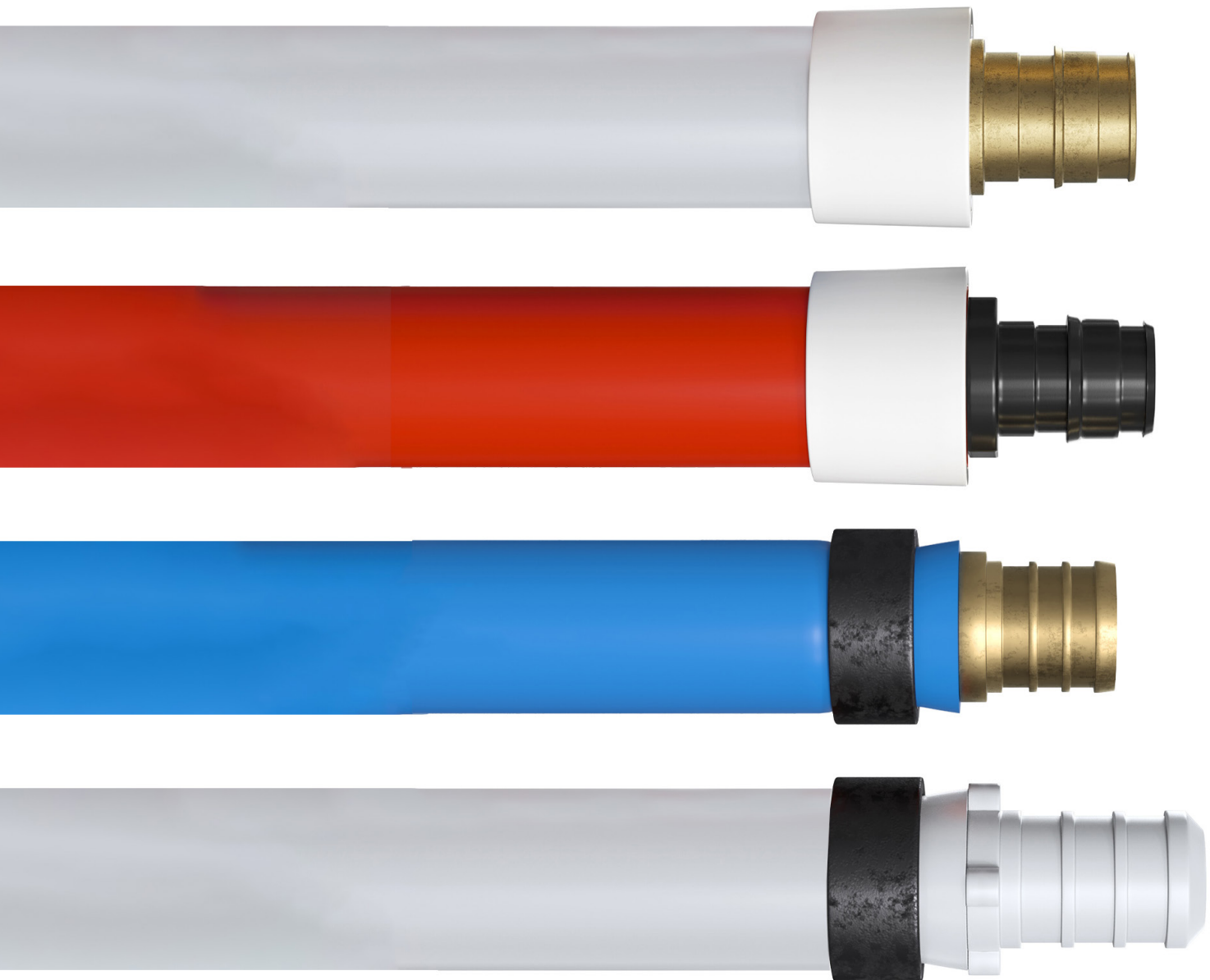


PEX-A pipe's high thermal resistance allows hot water lines to stay hot longer than copper or CPVC pipe – **saving valuable energy**.



Jones Stephens backs our PEX-A plumbing system with a **25-year limited warranty**.

Jones Stephens' **PEX fittings** are manufactured of high-quality brass and plastic and are available in expansion and crimp connection styles.



Made with **strong polymer or brass material**, F1960 cold expansion fittings, F1807 brass crimp fittings, and F2159 plastic crimp fittings provide a **dependable plumbing connection**.



F1960 cold expansion fittings, F1807 brass crimp fittings, and F2159 plastic crimp fittings provide a **secure, leak-free connection**.

Jones Stephens backs our PEX-A plumbing system with a **25-year limited warranty**.

Table of Contents

- PEX-A Pipe for Oxygen Barrier6**
 - Coils 6
 - Straights..... 7
- PEX-A Pipe for Potable Water7**
 - White Coils 7
 - White Straights..... 8
 - Blue Coils 8
 - Blue Straights..... 8
 - Red Coils 9
 - Red Straights..... 9
- F1960 Brass Cold Expansion Fittings 10**
 - Couplings 10
 - Tees..... 10
 - Elbows 11
 - Plugs..... 12
 - Adapters 12
- F1960 Polymer Cold Expansion Fittings 14**
 - Couplings 14
 - Tees..... 14
 - Elbows 15
 - Plugs..... 15
 - Manifolds..... 16
 - Swivel Faucet Adapter 16
 - Rings 16
- F1807 Brass Crimp Fittings 17**
 - Couplings 17
 - Tees..... 17
 - Elbows 18
 - Plugs..... 19
 - Adapters 19
 - Swivel Elbow 20
 - Ball Valves 21
 - Rings 21
 - Oetiker Clamps..... 21
- F2159 Polymer Crimp Fittings 22**
 - Couplings 22
 - Tees..... 23
 - Elbows 24
 - Plugs..... 25
 - Adapters 25
- Tools..... 26**
 - Crimping Tools 26
 - Cutting Tools 27

PEX-A Pipe for Oxygen Barrier

With its superior, durable crosslinking pattern, Jones Stephens' Oxygen Barrier PEX-A pipe is highly flexible. It creates less kinking and requires less fittings compared to alternate piping methods, making installation simple and saving the installer time and energy. PEX-A pipe expands to absorb the sound of water hammer – providing quiet operation. Its additional layer of polyethylene creates a moisture barrier, making it safe for radiant/hydronic applications and safe for burying in concrete. Manufactured to the highest industry standards, PEX-A pipe is freeze resistant, corrosion resistant, and energy efficient. PEX-A Pipe is approved for use with F1960 cold expansion fittings and F1807 crimp fittings.

- Crosslinked polyethylene
- Approved for use with ASTM F1960 and ASTM F1807 fittings
- Easy installation
- Corrosion resistant
- Freeze resistant
- Quiet operation
- Approved for use in plumbing applications
- 25-year limited warranty.
- NSF certified to ASTM F876/877 and CSA B137.5- 2017/2011a per NSF/ANSI 14, 61 and 372
- ANSI/NSF14 and ANSI/NSF 61 approved
- ASTM E84, ASTM F876, ASTM F877, ASTM F1960, ASTM F2023, ASTM E814, and ASTM E119/UL 263 approved
- CAN/ULC S101 and ULC S102.2 approved
- CSA B214 approved
- AWWA C904 approved

Oxygen Barrier PEX-A Pipe - Coils



PART NO.	DESCRIPTION	IDxOD	WEIGHT	CTN/MSTR
F76818	1/2" x 100' White PEX-A Oxygen Barrier Pipe, Coil	0.475" x 0.625"	5.30 lbs.	1/32
F76819	1/2" x 300' White PEX-A Oxygen Barrier Pipe, Coil	0.475" x 0.625"	15.89 lbs.	1/24
F76820	1/2" x 500' White PEX-A Oxygen Barrier Pipe, Coil	0.475" x 0.625"	26.48 lbs.	1/15
F76821	1/2" x 1000' White PEX-A Oxygen Barrier Pipe, Coil	0.475" x 0.625"	52.96 lbs.	1/8
F76823	5/8" x 100' White PEX-A Oxygen Barrier Pipe, Coil	0.574" x 0.750"	8.54 lbs.	1/29
F76824	5/8" x 300' White PEX-A Oxygen Barrier Pipe, Coil	0.574" x 0.750"	23.40 lbs.	1/17
F76825	5/8" x 400' White PEX-A Oxygen Barrier Pipe, Coil	0.574" x 0.750"	30.84 lbs	1/16
F76826	5/8" x 1000' White PEX-A Oxygen Barrier Pipe, Coil	0.574" x 0.750"	75.44 lbs.	1/6
F76827	3/4" x 100' White PEX-A Oxygen Barrier Pipe, Coil	0.671" x 0.875"	10.02 lbs.	1/24
F76828	3/4" x 300' White PEX-A Oxygen Barrier Pipe, Coil	0.671" x 0.875"	30.07 lbs.	1/14
F76829	3/4" x 500' White PEX-A Oxygen Barrier Pipe, Coil	0.671" x 0.875"	50.11 lbs	1/9
F76830	3/4" x 1000' White PEX-A Oxygen Barrier Pipe, Coil	0.671" x 0.875"	100.22 lbs	1/4

Oxygen Barrier PEX-A Pipe - 20' Length



PART NO.	DESCRIPTION	IDxOD	WEIGHT	CTN/MSTR
F76817	1/2" x 20' White PEX-A Oxygen Barrier Pipe, 25 Straights	0.475" x 0.625"	31.38 lbs.	1/10
F76822	5/8" x 20' White PEX-A Oxygen Barrier Pipe, 15 Straights	0.574" x 0.750"	26.71 lbs.	1/10

PEX-A Pipe for Potable Water

With its superior, durable crosslinking pattern, PEX-A pipe is highly flexible. It creates less kinking and requires less fittings compared to alternate piping methods, making installation simple and saving the installer time and energy. PEX-A pipe expands to absorb the sound of water hammer – providing quiet operation. Manufactured to the highest industry standards, PEX-A pipe is freeze resistant, corrosion resistant, and energy efficient. PEX-A Pipe is approved for use with F1960 cold expansion fittings and F1807 crimp fittings.

- Crosslinked polyethylene
- Approved for use with ASTM F1960 and ASTM F1807 fittings
- Easy installation
- Corrosion resistant
- NSF certified to ASTM F876/877 and CSA B137.5- 2017/2011a per NSF/ANSI 14, 61 and 372
- ANSI/NSF14 and ANSI/NSF 61 approved
- ASTM E84, ASTM F876, ASTM F877, ASTM F1960, ASTM F2023, ASTM E814, and ASTM E119/UL 263 approved
- CAN/ULC S101 and ULC S102.2 approved
- CSA B214 approved
- AWWA C904 approved
- Freeze resistant
- Quiet operation
- Approved for use in plumbing applications
- 25-year limited warranty.

PEX-A Pipe for Potable Water - White Coils



PART NO.	DESCRIPTION	IDxOD	WEIGHT	CTN/MSTR
F76782	1/2" x 100' White PEX-A Pipe, Coil	0.475" x 0.625"	6 lbs.	1/32
F76783	1/2" x 300' White PEX-A Pipe, Coil	0.475" x 0.625"	18 lbs.	1/24
F76784	1/2" x 500' White PEX-A Pipe, Coil	0.475" x 0.625"	27 lbs.	1/15
F76785	1/2" x 1000' White PEX-A Pipe, Coil	0.475" x 0.625"	54 lbs.	1/8
F76787	3/4" x 100' White PEX-A Pipe, Coil	0.671" x 0.875"	10 lbs.	1/24
F76788	3/4" x 300' White PEX-A Pipe, Coil	0.671" x 0.875"	34 lbs.	1/14
F76789	3/4" x 500' White PEX-A Pipe, Coil	0.671" x 0.875"	54 lbs.	1/9
F76791	1" x 100' White PEX-A Pipe, Coil	0.862" x 1.125"	20 lbs.	1/24
F76792	1" x 300' White PEX-A Pipe, Coil	0.862" x 1.125"	56 lbs.	1/8
F76793	1" x 500' White PEX-A Pipe, Coil	0.862" x 1.125"	93 lbs.	1/6

PEX-A Pipe for Potable Water - White 20' Length



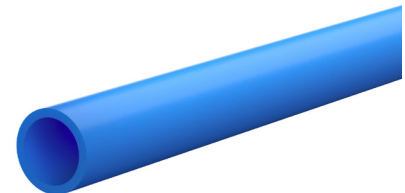
PART NO.	DESCRIPTION	IDxOD	WEIGHT	CTN/MSTR
F76781	1/2" x 20' White PEX-A Pipe, 25 Straights	0.475" x 0.625"	28 lbs.	1/10
F76786	3/4" x 20' White PEX-A Pipe, 15 Straights	0.671" x 0.875"	31 lbs.	1/10
F76790	1" x 20' White PEX-A Pipe, 10 Straights	0.862" x 1.125"	35 lbs.	1/10

PEX-A Pipe for Potable Water - Blue Coils



PART NO.	DESCRIPTION	IDxOD	WEIGHT	CTN/MSTR
F76806	1/2" x 100' Blue PEX-A Pipe, Coil	0.475" x 0.625"	6 lbs.	1/32
F76807	1/2" x 300' Blue PEX-A Pipe, Coil	0.475" x 0.625"	18 lbs.	1/24
F76808	1/2" x 1000' Blue PEX-A Pipe, Coil	0.475" x 0.625"	54 lbs.	1/8
F76810	3/4" x 100' Blue PEX-A Pipe, Coil	0.671" x 0.875"	10 lbs.	1/24
F76811	3/4" x 300' Blue PEX-A Pipe, Coil	0.671" x 0.875"	34 lbs.	1/14
F76812	3/4" x 500' Blue PEX-A Pipe, Coil	0.671" x 0.875"	54 lbs.	1/9
F76814	1" x 100' Blue PEX-A Pipe, Coil	0.862" x 1.125"	20 lbs.	1/24
F76815	1" x 300' Blue PEX-A Pipe, Coil	0.862" x 1.125"	56 lbs.	1/8
F76816	1" x 500' Blue PEX-A Pipe, Coil	0.862" x 1.125"	93 lbs.	1/6

PEX-A Pipe for Potable Water - Blue 20' Length



PART NO.	DESCRIPTION	IDxOD	WEIGHT	CTN/MSTR
F76805	1/2" x 20' Blue PEX-A Pipe, 25 Straights	0.475" x 0.625"	28 lbs.	1/10
F76809	3/4" x 20' Blue PEX-A Pipe, 15 Straights	0.671" x 0.875"	31 lbs.	1/10
F76813	1" x 20' Blue PEX-A Pipe, 10 Straights	0.862" x 1.125"	35 lbs.	1/10

PEX-A Pipe for Potable Water - Red Coils



PART NO.	DESCRIPTION	IDxOD	WEIGHT	CTN/MSTR
F76795	1/2" x 100' Red PEX-A Pipe, Coil	0.475" x 0.625"	6 lbs.	1/32
F76796	1/2" x 300' Red PEX-A Pipe, Coil	0.475" x 0.625"	18 lbs.	1/24
F76797	1/2" x 1000' Red PEX-A Pipe, Coil	0.475" x 0.625"	54 lbs.	1/8
F76799	3/4" x 100' Red PEX-A Pipe, Coil	0.671" x 0.875"	10 lbs.	1/24
F76800	3/4" x 300' Red PEX-A Pipe, Coil	0.671" x 0.875"	34 lbs.	1/14
F76801	3/4" x 500' Red PEX-A Pipe, Coil	0.671" x 0.875"	54 lbs.	1/9
F76803	1" x 100' Red PEX-A Pipe, Coil	0.862" x 1.125"	20 lbs.	1/24
F76804	1" x 300' Red PEX-A Pipe, Coil	0.862" x 1.125"	56 lbs.	1/8

PEX-A Pipe for Potable Water - Red 20' Length



PART NO.	DESCRIPTION	IDxOD	WEIGHT	CTN/MSTR
F76794	1/2" x 20' Red PEX-A Pipe, 25 Straights	0.475" x 0.625"	28 lbs.	1/10
F76798	3/4" x 20' Red PEX-A Pipe, 15 Straights	0.671" x 0.875"	31 lbs.	1/10
F76802	1" x 20' Red PEX-A Pipe, 10 Straights	0.862" x 1.125"	35 lbs.	1/10

F1960 Brass Cold Expansion Fittings

Manufactured to the highest industry standards, Jones Stephens’ F1960 lead-free brass cold expansion fittings provide precise, secure, and leak-free connections. Made with DZR brass, F1960 cold expansion fittings are corrosion and chlorine/chemical resistant – making them a great fit for aggressive water environments. F1960 lead-free brass cold expansion fittings are approved for use with PEX-A piping.

- Simple and dependable plumbing connection
- Easy installation
- Leak-proof connections
- Lead-free DZR brass
- Can be used with F1960 PEX rings
- 25-year limited warranty.
- Tested and certified to ASTM F1960
- Certified to CSA B137.5-2020
- Certified to NSF/ANSI/CAN 61- 2019, NSF/ANSI 372-2016, and NSF/ANSI 14-2015
- cUPC Listed

F1960 Brass Couplings



PART NO.	DESCRIPTION	A	B	CTN/MSTR
F76854B	1/2" F1960 Brass PEX Coupling	1/2"	1/2"	25/100
F76855B	1/2" x 3/4" F1960 Brass PEX Coupling	1/2"	3/4"	25/100
F76857B	3/4" F1960 Brass PEX Coupling	3/4"	3/4"	25/100
F76856B	3/4" x 1" F1960 Brass PEX Coupling	3/4"	1"	10/100
F76853B	1" F1960 Brass PEX Coupling	1"	1"	10/100

F1960 Brass Tees



PART NO.	DESCRIPTION	A	B	C	CTN/MSTR
F76866B	1/2" F1960 Brass PEX Tee	1/2"	1/2"	1/2"	25/100
F76868B	3/4" F1960 Brass PEX Tee	3/4"	3/4"	3/4"	25/100
F76904B	1" F1960 Brass PEX Tee	1"	1"	1"	10/60

F1960 Brass Reducing Tees



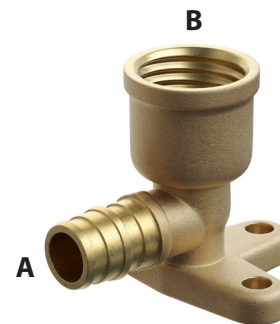
PART NO.	DESCRIPTION	A	B	C	CTN/MSTR
F76905B	1/2" x 1/2" x 3/4" F1960 Brass PEX Reducing Tee	1/2"	1/2"	3/4"	25/150
F76906B	3/4" x 1/2" x 1/2" F1960 Brass PEX Reducing Tee	3/4"	1/2"	1/2"	25/150
F76913B	3/4" x 1/2" x 3/4" F1960 Brass PEX Reducing Tee	3/4"	1/2"	3/4"	25/150
F76867B	3/4" x 3/4" x 1/2" F1960 Brass PEX Reducing Tee	3/4"	3/4"	1/2"	25/100
F76869B	3/4" x 3/4" x 1" F1960 Brass PEX Reducing Tee	3/4"	3/4"	1"	10/50
F76896B	1" x 1/2" x 1" F1960 Brass PEX Reducing Tee	1"	1/2"	1"	10/80
F76894B	1" x 1" x 1/2" F1960 Brass PEX Reducing Tee	1"	1"	1/2"	10/100
F76903B	1" x 3/4" x 1/2" F1960 Brass PEX Reducing Tee	1"	3/4"	1/2"	10/100
F76898B	1" x 3/4" x 3/4" F1960 Brass PEX Reducing Tee	1"	3/4"	3/4"	10/100
F76897B	1" x 3/4" x 1" F1960 Brass PEX Reducing Tee	1"	3/4"	1"	10/80
F76895B	1" x 1" x 3/4" F1960 Brass PEX Reducing Tee	1"	1"	3/4"	10/80

F1960 Brass 90° Elbows



PART NO.	DESCRIPTION	A	B	CTN/MSTR
F76870B	1/2" F1960 Brass PEX 90° Elbow	1/2"	1/2"	25/100
F76831B	1/2" F1960 x MIP Brass PEX 90° Elbow	1/2"	1/2"	25/100
F76871B	3/4" F1960 Brass PEX 90° Elbow	3/4"	3/4"	25/100
F76872B	1" F1960 Brass PEX 90° Elbow	1"	1"	10/100

F1960 Brass Drop Ear 90° Elbows



PART NO.	DESCRIPTION	A	B	CTN/MSTR
F76833B	1/2" F1960 x FIP Brass PEX 90° Drop Ear Elbow	1/2"	1/2"	25/100
F76834B	3/4" F1960 x FIP Brass PEX 90° Drop Ear Elbow	3/4"	3/4"	4/20

F1960 Brass Plugs



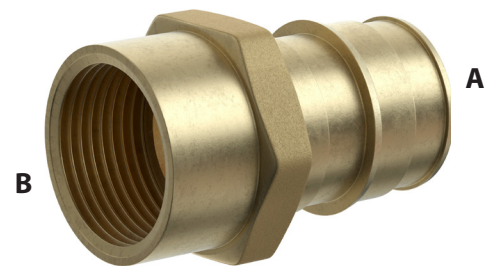
PART NO.	DESCRIPTION	CTN/MSTR
F76900B	1/2" F1960 Brass PEX Plug	25/600
F76901B	3/4" F1960 Brass PEX Plug	25/350
F76902B	1" F1960 Brass PEX Plug	10/200

F1960 Brass MIP Adapters



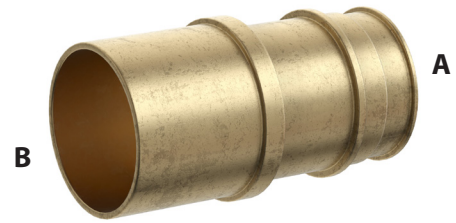
PART NO.	DESCRIPTION	A	B	CTN/MSTR
F76849B	1/2" F1960 x MIP Brass PEX Adapter	1/2"	1/2"	25/100
F76850B	1/2" F1960 x 3/4" MIP Brass PEX Adapter	1/2"	3/4"	25/100
F76852B	3/4" F1960 x MIP Brass PEX Adapter	3/4"	3/4"	25/100
F76851B	3/4" F1960 x 1" MIP Brass PEX Adapter	3/4"	1"	10/100
F76848B	1" F1960 x 3/4" MIP Brass PEX Adapter	1"	3/4"	10/100
F76847B	1" F1960 x MIP Brass PEX Adapter	1"	1"	10/50

F1960 Brass FIP Adapters



PART NO.	DESCRIPTION	A	B	CTN/MSTR
F76859B	1/2" F1960 x FIP Brass PEX Adapter	1/2"	1/2"	25/100
F76860B	1/2" F1960 x 3/4" FIP Brass PEX Adapter	1/2"	3/4"	25/100
F76862B	3/4" F1960 x FIP Brass PEX Adapter	3/4"	3/4"	25/100
F76861B	3/4" F1960 x 1" FIP Brass PEX Adapter	3/4"	1"	10/100
F76858B	1" F1960 x FIP Brass PEX Adapter	1"	1"	10/50

F1960 Brass Male Sweat Adapters



PART NO.	DESCRIPTION	A	B	CTN/MSTR
F76836B	1/2" F1960 Brass PEX Male Sweat Adapter	1/2"	1/2"	25/100
F76837B	1/2" F1960 x 3/4" Male Brass PEX Sweat Adapter	1/2"	3/4"	25/100
F76839B	3/4" F1960 x 1/2" Male Brass PEX Sweat Adapter	3/4"	1/2"	25/100
F76840B	3/4" F1960 Brass PEX Male Sweat Adapter	3/4"	3/4"	25/100
F76838B	3/4" F1960 x 1" Male Brass PEX Sweat Adapter	3/4"	1"	10/100
F76835B	1" F1960 Brass PEX Male Sweat Adapter	1"	1"	10/100

F1960 Brass Female Sweat Adapters



PART NO.	DESCRIPTION	A	B	CTN/MSTR
F76842B	1/2" F1960 Brass PEX Female Sweat Adapter	1/2"	1/2"	25/100
F76843B	1/2" F1960 x 3/4" Female Brass PEX Sweat Adapter	1/2"	3/4"	25/100
F76845B	3/4" F1960 x 1/2" Female Brass PEX Sweat Adapter	3/4"	1/2"	25/100
F76846B	3/4" F1960 Brass PEX Female Sweat Adapter	3/4"	3/4"	25/100
F76844B	3/4" F1960 x 1" Female Brass PEX Sweat Adapter	3/4"	1"	10/100
F76841B	1" F1960 Brass PEX Female Sweat Adapter	1"	1"	10/100

F1960 Polymer Cold Expansion Fittings

Manufactured to the highest industry standards, Jones Stephens’ F1960 cold expansion fittings provide precise, secure, and leak-free connections. Made with strong polymer material, F1960 cold expansion fittings are corrosion and chlorine/chemical resistant – making them a great fit for aggressive water environments. F1960 polymer cold expansion fittings are approved for use with PEX-A piping.

- Simple and dependable plumbing connection
- Easy installation
- Leak-proof connections
- Polymer construction
- Manufactured of premium grade resin with non-mixed blends
- 25-year limited warranty.
- Can be used with F1960 PEX rings
- Tested and certified to ASTM F1960 and ASTM F877-2020
- Certified to CSA B137.5-2020 and CSA B137.5-2017
- Certified to NSF/ANSI/CAN 61-2018, NSF/ANSI 14-2016, and NSF/ANSI 372-2011
- cUPC Listed

F1960 Polymer Couplings



PART NO.	DESCRIPTION	A	B	CTN/MSTR
F76754	1/2" F1960 Poly PEX Coupling	1/2"	1/2"	25/1000
F76756	3/4" x 1/2" F1960 Poly PEX Coupling	3/4"	1/2"	25/400
F76755	3/4" F1960 Poly PEX Coupling	3/4"	3/4"	25/500
F76758	1" x 3/4" F1960 Poly PEX Coupling	1"	3/4"	25/300
F76779	1" F1960 Poly PEX Coupling	1"	1"	10/250

F1960 Polymer Tees



PART NO.	DESCRIPTION	A	B	C	CTN/MSTR
F76762	1/2" F1960 Poly PEX Tee	1/2"	1/2"	1/2"	25/400
F76763	3/4" F1960 Poly PEX Tee	3/4"	3/4"	3/4"	25/200
F76773	1" F1960 Poly PEX Tee	1"	1"	1"	10/100

F1960 Polymer Reducing Tees



PART NO.	DESCRIPTION	A	B	C	CTN/MSTR
F76764	1/2" x 1/2" x 3/4" F1960 Poly PEX Reducing Tee	1/2"	1/2"	3/4"	25/250
F76765	3/4" x 1/2" x 1/2" F1960 Poly PEX Reducing Tee	3/4"	1/2"	1/2"	25/300
F76766	3/4" x 1/2" x 3/4" F1960 Poly PEX Reducing Tee	3/4"	1/2"	3/4"	25/250
F76767	3/4" x 3/4" x 1/2" F1960 Poly PEX Reducing Tee	3/4"	3/4"	1/2"	25/100
F76774	3/4" x 3/4" x 1" F1960 Poly PEX Reducing Tee	3/4"	3/4"	1"	10/100
F76770	1" x 1" x 1/2" F1960 Poly PEX Reducing Tee	1"	1"	1/2"	10/100
F76772	1" x 3/4" x 3/4" F1960 Poly PEX Reducing Tee	1"	3/4"	3/4"	10/100
F76775	1" x 1" x 3/4" F1960 Poly PEX Reducing Tee	1"	1"	3/4"	10/100
F76776	1" x 3/4" x 1" F1960 Poly PEX Reducing Tee	1"	3/4"	1"	10/100

F1960 Polymer 90° Elbows



PART NO.	DESCRIPTION	A	B	CTN/MSTR
F76751	1/2" F1960 Poly PEX 90° Elbow	1/2"	1/2"	25/600
F76752	3/4" F1960 Poly PEX 90° Elbow	3/4"	3/4"	25/200
F76753	1" F1960 Poly PEX 90° Elbow	1"	1"	10/100

F1960 Polymer Plugs



PART NO.	DESCRIPTION	CTN/MSTR
F76768	1/2" F1960 Poly PEX Plug	25/1500
F76769	3/4" F1960 Poly PEX Plug	25/1500
F76771	1" F1960 Poly PEX Plug	10/300

F1960 Polymer Manifolds



PART NO.	DESCRIPTION	A	B	CTN/MSTR
F76001	3/4" F1960 Poly PEX Manifold, 2-Port with Open End	3/4"	1/2"	10/140
F76002	3/4" F1960 Poly PEX Manifold, 3-Port with Open End	3/4"	1/2"	10/100
F76006	3/4" F1960 Poly PEX Manifold, 4-Port with Open End	3/4"	1/2"	10/100
F76007	3/4" F1960 Poly PEX Manifold, 6-Port with Open End	3/4"	1/2"	10/70
F76005	3/4" F1960 Poly PEX Manifold, 3-Port with Closed End	3/4"	1/2"	10/140
F76004	3/4" F1960 Poly PEX Manifold, 4-Port with Closed End	3/4"	1/2"	10/100
F76003	3/4" F1960 Poly PEX Manifold, 6-Port with Closed End	3/4"	1/2"	10/60
F76009	1" F1960 Poly PEX Manifold, 4-Port with Closed End	1"	1/2"	10/70
F76008	1" F1960 Poly PEX Manifold, 6-Port with Closed End	1"	1/2"	10/60

F1960 Polymer Swivel Faucet Adapter



PART NO.	DESCRIPTION	CTN/MSTR
F76780	1/2" F1960 Poly PEX Swivel Faucet Adapter	25/400

F1960 Rings

- Sold in bag (carton) quantities only
- Certified to NSF 61



PART NO.	DESCRIPTION	CTN/MSTR
F76909	1/2" F1960 PEX Ring with Stop	50/5400
F76910	5/8" F1960 PEX Ring with Stop	30/1500
F76911	3/4" F1960 PEX Ring with Stop	40/1760
F76912	1" F1960 PEX Ring with Stop	25/1250

F1807 Brass Crimp Fittings

Manufactured to the highest industry standards, Jones Stephens' F1807 brass crimp fittings provide precise, leak-free connections. The secure and reliable crimp fitting method provides full, immediate strength upon installation, with 360-degree uniform pressure. F1807 brass crimp fittings are approved for use with PEX piping.

- Simple and dependable plumbing connection
- Easy installation
- Leak-proof connections
- Lead-free brass
- Can be used with copper PEX crimp rings or stainless steel PEX clamps
- 25-year limited warranty.
- Certified to IAPMO IGC 319-2016 and CSA B137.5-2020
- Certified to NSF/ANSI 372-2016, NSF/ANSI 61-2017, and NSF/ANSI 14-2016a
- Certified to ASTM F1807-2019b and CSA B137.5-2017
- NSF/ANSI/CAN 61-2019
- cUPC Listed

F1807 Brass Couplings



PART NO.	DESCRIPTION	A	B	CTN/MSTR
C76001LF	1/2" F1807 Brass PEX Coupling	1/2"	1/2"	100/1000
C76004LF	3/4" x 1/2" F1807 Brass PEX Coupling	3/4"	1/2"	50/500
C76002LF	3/4" F1807 Brass PEX Coupling	3/4"	3/4"	50/500
C76005LF	1" x 3/4" F1807 Brass PEX Coupling	1"	3/4"	50/400
C76003LF	1" F1807 Brass PEX Coupling	1"	1"	25/300

F1807 Brass Tees



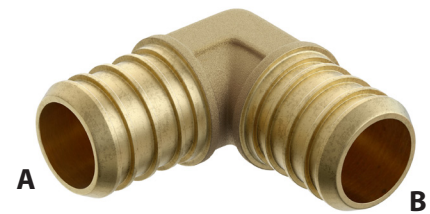
PART NO.	DESCRIPTION	A	B	C	CTN/MSTR
C76014LF	1/2" F1807 Brass PEX Tee	1/2"	1/2"	1/2"	50/500
C76015LF	3/4" F1807 Brass PEX Tee	3/4"	3/4"	3/4"	50/300
C76016LF	1" F1807 Brass PEX Tee	1"	1"	1"	25/100

F1807 Brass Reducing Tees



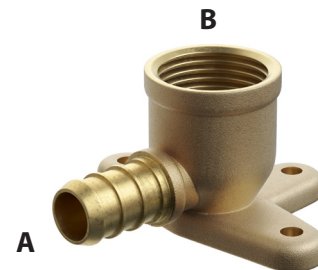
PART NO.	DESCRIPTION	A	B	C	CTN/MSTR
C76017LF	1/2" x 1/2" x 3/4" F1807 Brass PEX Reducing Tee	1/2"	1/2"	3/4"	50/300
C76018LF	3/4" x 1/2" x 1/2" F1807 Brass PEX Reducing Tee	3/4"	1/2"	1/2"	25/250
C76019LF	3/4" x 1/2" x 3/4" F1807 Brass PEX Reducing Tee	3/4"	1/2"	3/4"	25/250
C76020LF	3/4" x 3/4" x 1/2" F1807 Brass PEX Reducing Tee	3/4"	3/4"	1/2"	25/250
C76022LF	1" x 1" x 1/2" F1807 Brass PEX Reducing Tee	1"	1"	1/2"	25/100
C76021LF	1" x 3/4" x 3/4" F1807 Brass PEX Reducing Tee	1"	3/4"	3/4"	25/200
C76023LF	1" x 1" x 3/4" F1807 Brass PEX Reducing Tee	1"	1"	3/4"	25/200

F1807 Brass 90° Elbows



PART NO.	DESCRIPTION	A	B	CTN/MSTR
C76008LF	1/2" F1807 Brass PEX 90° Elbow	1/2"	1/2"	100/800
C76009LF	3/4" F1807 Brass PEX 90° Elbow	3/4"	3/4"	50/250
C76010LF	1" F1807 Brass PEX 90° Elbow	1"	1"	25/100
C76013LF	1/2" F1807 x MIP Brass PEX 90° Elbow	1/2"	1/2"	50/400
C76091LF	3/4" x 1/2" F1807 Brass PEX 90° Elbow	3/4"	1/2"	50/200

F1807 Brass Drop Ear 90° Elbows



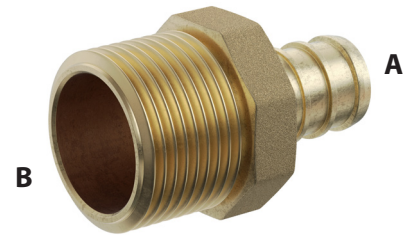
PART NO.	DESCRIPTION	A	B	CTN/MSTR
C76079LF	1/2" F1807 x FIP Brass PEX 90° 3 Drop Ear Elbow	1/2"	1/2"	25/200
C76080LF	1/2" F1807 x FIP Brass PEX 90° 2 Drop Ear Elbow	1/2"	1/2"	25/200
C76081LF	3/4" F1807 x 1/2" FIP Brass PEX 90° Drop Ear Elbow	3/4"	1/2"	25/200
C76090LF	3/4" F1807 x FIP Brass PEX 90° Drop Ear Elbow	3/4"	3/4"	5/50

F1807 Brass Plugs



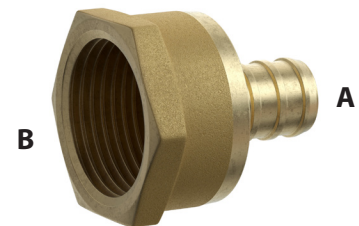
PART NO.	DESCRIPTION	CTN/MSTR
C76065LF	1/2" F1807 Brass PEX Plug	100/1000
C76066LF	3/4" F1807 Brass PEX Plug	100/800
C76067LF	1" F1807 Brass PEX Plug	50/500

F1807 Brass MIP Adapters



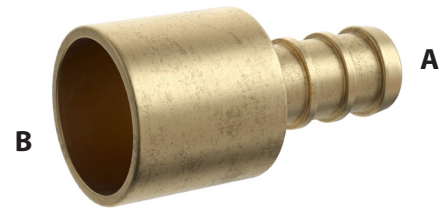
PART NO.	DESCRIPTION	A	B	CTN/MSTR
C76034LF	1/2" F1807 x MIP Brass PEX Adapter	1/2"	1/2"	25/400
C76035LF	1/2" F1807 x 3/4" MIP Brass PEX Adapter	1/2"	3/4"	25/200
C76082LF	3/4" F1807 x 1/2" MIP Brass PEX Adapter	3/4"	1/2"	50/250
C76036LF	3/4" F1807 x MIP Brass PEX Adapter	3/4"	3/4"	50/250
C76038LF	1" F1807 x 3/4" MIP Brass PEX Adapter	1"	3/4"	25/200
C76037LF	1" F1807 x MIP Brass PEX Adapter	1"	1"	25/150

F1807 Brass FIP Adapters



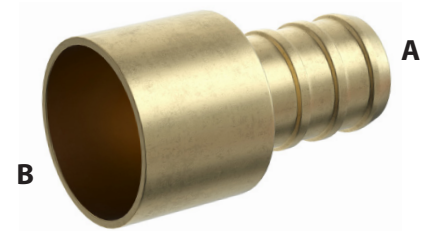
PART NO.	DESCRIPTION	A	B	CTN/MSTR
C76041LF	1/2" F1807 x FIP Brass PEX Adapter	1/2"	1/2"	50/250
C76042LF	1/2" F1807 x 3/4" FIP Brass PEX Adapter	1/2"	3/4"	50/250
C76043LF	3/4" F1807 x FIP Brass PEX Adapter	3/4"	3/4"	50/250
C76044LF	1" F1807 x FIP Brass PEX Adapter	1"	1"	25/250

F1807 Brass Male Sweat Adapters



PART NO.	DESCRIPTION	A	B	CTN/MSTR
C76047LF	3/8" F1807 x 1/2" Male Brass PEX Sweat Adapter	3/8"	1/2"	50/500
C76048LF	1/2" F1807 Brass PEX Male Sweat Adapter	1/2"	1/2"	100/1000
C76049LF	1/2" F1807 x 3/4" Male Brass PEX Sweat Adapter	1/2"	3/4"	25/100
C76050LF	3/4" F1807 Brass PEX Male Sweat Adapter	3/4"	3/4"	50/400
C76051LF	1" F1807 Brass PEX Male Sweat Adapter	1"	1"	25/100

F1807 Brass Female Sweat Adapters



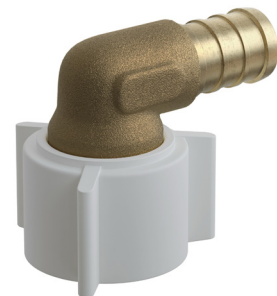
PART NO.	DESCRIPTION	A	B	CTN/MSTR
C76027LF	1/2" F1807 Brass PEX Female Sweat Adapter	1/2"	1/2"	50/1000
C76029LF	1/2" F1807 x 3/4" Female Brass PEX Sweat Adapter	1/2"	3/4"	50/250
C76028LF	3/4" F1807 Brass PEX Female Sweat Adapter	3/4"	3/4"	25/400
C76030LF	1" F1807 Brass PEX Female Sweat Adapter	1"	1"	25/200

F1807 Brass PEX to Poly Adapter



PART NO.	DESCRIPTION	A	B	CTN/MSTR
C76100LF	1/2" F1807 Brass PEX to Poly Adapter	1/2"	1/2"	25/500
C76101LF	3/4" F1807 Brass PEX to Poly Adapter	3/4"	3/4"	25/300

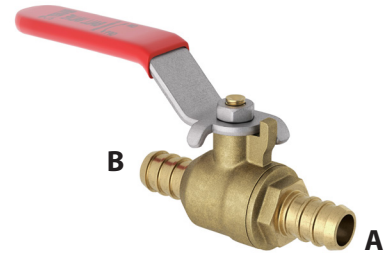
F1807 Brass FIP Swivel Elbow



PART NO.	DESCRIPTION	CTN/MSTR
C76060LF	1/2" F1807 x FIP Brass PEX 90° Elbow with Poly Swivel Nut	50/200

F1807 Brass Ball Valves

- Certified to IAMPO/ANSI Z1157-2014e1
- Certified to NSF/ANSI 14-2010a and NSF/ANSI 372-2016
- Certified to NSF/ANSI/CAN 61-2019
- cUPC listed



PART NO.	DESCRIPTION	A	B	CTN/MSTR
B63050LF	1/2" F1807 Brass PEX Ball Valve	1/2"	1/2"	10/120
B63075LF	3/4" F1807 Brass PEX Ball Valve	3/4"	3/4"	10/80
B63100LF	1" F1807 Brass PEX Ball Valve	1"	1"	6/48

F1807 Rings

- Sold in bag (carton) quantities
- Copper construction
- Certified to IAPMO IGC 319-2016 and CSA B137.5-2020



PART NO.	DESCRIPTION	CTN/MSTR
C76070	3/8" F1807 PEX Ring	100/2000
C76071	1/2" F1807 PEX Ring	100/2000
C76072	3/4" F1807 PEX Ring	100/2000
C76073	1" F1807 PEX Ring	100/2000

Oetiker Clamps

- Sold in bag (carton) quantities
- Stainless Steel construction



PART NO.	DESCRIPTION	CTN/MSTR
C76074	3/8" Oetiker Stainless Steel PEX Clamp	100/2000
C76075	1/2" Oetiker Stainless Steel PEX Clamp	100/2000
C76076	3/4" Oetiker Stainless Steel PEX Clamp	50/2000
C76077	1" Oetiker Stainless Steel PEX Clamp	50/1000

F2159 Polymer Crimp Fittings

Manufactured to the highest industry standards, Jones Stephens' F2159 polymer crimp fittings provide precise, leak-free connections. The secure and reliable crimp fitting method provides full, immediate strength upon installation, with 360-degree uniform pressure. F2159 polymer crimp fittings are approved for use with PEX piping.

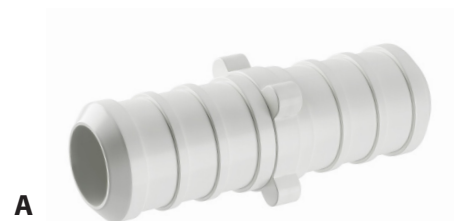
- Simple and dependable plumbing connection
- Easy installation
- Leak-proof connections
- Polymer construction
- Manufactured of premium grade resin with non-mixed blends
- Can be used with brass PEX crimp rings or stainless steel PEX clamps
- 25-year limited warranty.
- Certified to ASTM F2159-2014 and CSA B137.5-2013
- Certified to ASTM F877-2020 and CSA B137.5-2017
- Certified to NSF/ANSI 14-2015, NSF/ANSI 14-2016a, and NSF/ANSI 372-2011
- Certified to NSF/ANSI/CAN 61-2019
- cUPC listed

F2159 Polymer Couplings - Black



PART NO.	DESCRIPTION	A	B	CTN/MSTR
C76754	1/2" F2159 Poly PEX Coupling	1/2"	1/2"	50/1000
C76756	3/4" x 1/2" F2159 Poly PEX Coupling	3/4"	1/2"	50/600
C76755	3/4" F2159 Poly PEX Coupling	3/4"	3/4"	50/600
C76758	1" x 3/4" F2159 Poly PEX Coupling	1"	3/4"	25/300
C76757	1" F2159 Poly PEX Coupling	1"	1"	25/200

F2159 Polymer Couplings - White



PART NO.	DESCRIPTION	A	B	CTN/MSTR
C76704	1/2" F2159 Poly PEX Coupling	1/2"	1/2"	50/1000
C76706	3/4" x 1/2" F2159 Poly PEX Coupling	3/4"	1/2"	50/600
C76705	3/4" F2159 Poly PEX Coupling	3/4"	3/4"	50/600
C76723	1" x 3/4" F2159 Poly PEX Coupling	1"	3/4"	25/300
C76722	1" F2159 Poly PEX Coupling	1"	1"	25/200

F2159 Polymer Tees - Black



PART NO.	DESCRIPTION	A	B	C	CTN/MSTR
C76762	1/2" F2159 Poly PEX Tee	1/2"	1/2"	1/2"	50/400
C76763	3/4" F2159 Poly PEX Tee	3/4"	3/4"	3/4"	25/200
C76773	1" F2159 Poly PEX Tee	1"	1"	1"	50/200

F2159 Polymer Tees - White



PART NO.	DESCRIPTION	A	B	C	CTN/MSTR
C76700	1/2" F2159 Poly PEX Tee	1/2"	1/2"	1/2"	50/400
C76701	3/4" F2159 Poly PEX Tee	3/4"	3/4"	3/4"	25/200

F2159 Polymer Reducing Tees - Black



PART NO.	DESCRIPTION	A	B	C	CTN/MSTR
C76764	1/2" x 1/2" x 3/4" F2159 Poly PEX Reducing Tee	1/2"	1/2"	3/4"	25/300
C76765	3/4" x 1/2" x 1/2" F2159 Poly PEX Reducing Tee	3/4"	1/2"	1/2"	25/300
C76766	3/4" x 1/2" x 3/4" F2159 Poly PEX Reducing Tee	3/4"	1/2"	3/4"	25/300
C76767	3/4" x 3/4" x 1/2" F2159 Poly PEX Reducing Tee	3/4"	3/4"	1/2"	25/300
C76774	3/4" x 3/4" x 1" F2159 Poly PEX Reducing Tee	3/4"	3/4"	1"	25/100
C76770	1" x 1" x 1/2" F2159 Poly PEX Reducing Tee	1"	1"	1/2"	25/300
C76772	1" x 3/4" x 3/4" F2159 Poly PEX Reducing Tee	1"	3/4"	3/4"	25/300
C76775	1" x 1" x 3/4" F2159 Poly PEX Reducing Tee	1"	1"	3/4"	25/300
C76776	1" x 3/4" x 1" F2159 Poly PEX Reducing Tee	1"	3/4"	1"	25/300

F2159 Polymer Reducing Tees - White



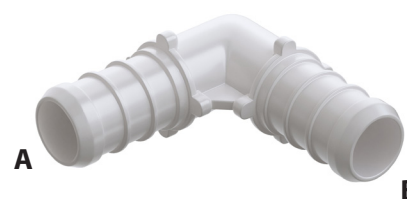
PART NO.	DESCRIPTION	A	B	C	CTN/MSTR
C76709	1/2" x 1/2" x 3/4" F2159 Poly PEX Reducing Tee	1/2"	1/2"	3/4"	25/300
C76710	3/4" x 1/2" x 1/2" F2159 Poly PEX Reducing Tee	3/4"	1/2"	1/2"	25/300
C76711	3/4" x 1/2" x 3/4" F2159 Poly PEX Reducing Tee	3/4"	1/2"	3/4"	25/300
C76712	3/4" x 3/4" x 1/2" F2159 Poly PEX Reducing Tee	3/4"	3/4"	1/2"	25/300

F2159 Polymer 90° Elbows - Black



PART NO.	DESCRIPTION	A	B	CTN/MSTR
C76751	1/2" F2159 Poly PEX 90° Elbow	1/2"	1/2"	50/500
C76752	3/4" F2159 Poly PEX 90° Elbow	3/4"	3/4"	25/350
C76753	1" F2159 Poly PEX 90° Elbow	1"	1"	10/150

F2159 Polymer 90° Elbows - White



PART NO.	DESCRIPTION	A	B	CTN/MSTR
C76702	1/2" F2159 Poly PEX 90° Elbow	1/2"	1/2"	50/500
C76703	3/4" F2159 Poly PEX 90° Elbow	3/4"	3/4"	25/350
C76720	1" F2159 Poly PEX 90° Elbow	1"	1"	10/150

F2159 Polymer Plugs - Black



PART NO.	DESCRIPTION	CTN/MSTR
C76768	1/2" F2159 Poly PEX Plug	100/2000
C76769	3/4" F2159 Poly PEX Plug	100/1000
C76771	1" F2159 Poly PEX Plug	100/1000

F2159 Polymer Plugs - White



PART NO.	DESCRIPTION	CTN/MSTR
C76740	1/2" F2159 Poly PEX Plug	100/2000
C76741	3/4" F2159 Poly PEX Plug	100/1000

F2159 Polymer MIP Adapters - Black



PART NO.	DESCRIPTION	A	B	CTN/MSTR
C76759	1/2" F2159 x MIP Poly PEX Adapter	1/2"	1/2"	50/500
C76760	3/4" F2159 x MIP Poly PEX Adapter	3/4"	3/4"	25/300
C76761	1" F2159 x MIP Poly PEX Adapter	1"	1"	10/150

F2159 Polymer MIP Adapters - White



PART NO.	DESCRIPTION	A	B	CTN/MSTR
C76707	1/2" F2159 x MIP Poly PEX Adapter	1/2"	1/2"	50/500
C76708	3/4" F2159 x MIP Poly PEX Adapter	3/4"	3/4"	25/300
C76727	1" F2159 x MIP Poly PEX Adapter	1"	1"	10/150

Crimping Tools

- Used to crimp PEX pipe
- Compatible with F1807 brass fittings and F2159 polymer fittings

PEX Crimp Tools

- For use on F1807 PEX Rings only



PART NO.	DESCRIPTION	CTN/MSTR
J40951	3/8" PEX Crimp Tool	1/1
J40952	1/2" PEX Crimp Tool	1/1
J40953	3/4" PEX Crimp Tool	1/1
J40954	1" PEX Crimp Tool	1/1
J40950	PEX Crimp Set with 3/8", 1/2", 3/4" Tools	1/1

PEX Crimp Sizing Tool



PART NO.	DESCRIPTION	CTN/MSTR
J40955	PEX Crimp Sizing Tool	1/1

Oetiker Crimp Tool

- For use on stainless steel clamps only



PART NO.	DESCRIPTION	CTN/MSTR
J40967	Oetiker® 3-Handle Ratcheting Crimp Tool	1/1

PEX Clamp Tools

- For use on Oetiker PEX Clamps only



PART NO.	DESCRIPTION	CTN/MSTR
J40965	One Hand PEX Stainless Steel Clamp Tool	1/1
J40966	PEX Stainless Steel Clamp Tool	1/1

Pipe Cutting Tools

- Plastic body
- Robust fastener with assists lever
- Single handed operation possible
- Cuts up to 1" vinyl tubing

Vinyl Tubing Cutter



PART NO.	DESCRIPTION	CTN/MSTR
P70030	Vinyl Tubing Cutter	12/72
P70031	Replacement Blade for Vinyl Tubing Cutter P70030	50/500



Jones Stephens **PEX-A Piping System**

Ask your local Jones Stephens
representative for more information.

