

JONES STEPHENS

# IRRIGATION | Product Catalog



**Table of Contents**

**Fittings** ..... 2-30

    PVC/DWV Fittings ..... 2-8

    Galvanized Malleable Fittings ..... 9-16

    Copper Stubouts ..... 16-18

    Brass Compression Fittings ..... 18-19

    Red Brass Insert Fittings ..... 19-20

    Red Brass Pipe Nipples ..... 20-21

    Yellow Brass Pipe Fittings ..... 22-23

    Brass Garden Hose Fittings ..... 23-25

    Brass Hose Barbs ..... 26

    PlumBite® Push On Fittings ..... 27-28

    Brass PEX Fittings ..... 29-30

    Plastic PEX Fittings ..... 30

**Ball Valves** ..... 31

**Gear Clamps** ..... 32

**Flange Connection Gaskets and Kits** ..... 32-34

**Meter Boxes** ..... 35-36

**Gauges** ..... 36-38

**Thermometers** ..... 38

**Safety** ..... 39

**Tools** ..... 40-45

## Coupling

H x H



- Used to join straight lengths of pipe

| PART NO. | SIZE   | CTN/MSTR |
|----------|--------|----------|
| PFC114   | 1-1/4" | 1/100    |
| PFC115   | 1-1/2" | 1/100    |
| PFC120   | 2"     | 1/100    |
| PFC130   | 3"     | 1/60     |
| PFC140   | 4"     | 1/25     |
| PFC160   | 6"     | 1/15     |

## Repair Coupling

H x H



- Furnished without center stop so that stationary lengths of pipe can be spliced together

| PART NO. | SIZE   | CTN/MSTR |
|----------|--------|----------|
| PFC116   | 1-1/2" | 1/25     |
| PFC122   | 2"     | 1/25     |
| PFC133   | 3"     | 1/10     |
| PFC144   | 4"     | 1/5      |

## Reducer Coupling

H x H



- Used to reduce or increase pipe sizes

| PART NO. | SIZE        | CTN/MSTR |
|----------|-------------|----------|
| PFC121   | 2" x 1-1/2" | 1/25     |
| PFC131   | 3" x 1-1/2" | 1/25     |
| PFC132   | 3" x 2"     | 1/20     |
| PFC142   | 4" x 2"     | 1/10     |
| PFC143   | 4" x 3"     | 1/20     |

## Flush Bushing

Spg x H



- Inserts into fitting hub to reduce to smaller pipe sizes

| PART NO. | SIZE            | CTN/MSTR |
|----------|-----------------|----------|
| PFB211   | 1-1/2" x 1-1/4" | 1/50     |
| PFB221   | 2" x 1-1/2"     | 1/100    |
| PFB231   | 3" x 1-1/2"     | 1/20     |
| PFB232   | 3" x 2"         | 1/30     |
| PFB242   | 4" x 2"         | 1/30     |
| PFB243   | 4" x 3"         | 1/30     |
| PFB264   | 6" x 4"         | 1/10     |

## Male Adapter

H x MPT

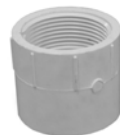


- Adapts to standard female pipe threads
- Teflon thread tape is recommended for threaded joints

| PART NO. | SIZE   | CTN/MSTR |
|----------|--------|----------|
| PMA414   | 1-1/4" | 1/50     |
| PMA415   | 1-1/2" | 1/50     |
| PMA420   | 2"     | 1/50     |
| PMA430   | 3"     | 1/25     |
| PMA440   | 4"     | 1/25     |

## Female Adapter

H x FPT



- Adapts to standard male pipe threads
- Teflon thread tape is recommended for threaded joints

| PART NO. | SIZE            | CTN/MSTR |
|----------|-----------------|----------|
| PFA314   | 1-1/4"          | 1/100    |
| PFA315   | 1-1/2"          | 1/100    |
| PFA311   | 1-1/2" x 1-1/4" | 1/100    |
| PFA320   | 2"              | 1/100    |
| PFA330   | 3"              | 1/30     |
| PFA340   | 4"              | 1/10     |
| PFA360   | 6"              | 1/10     |

## Fitting C.O. Adapter with Plug

Spg x FPT



- Solvent welds into fitting hub to provide access to piping
- Teflon thread tape is recommended for threaded joints

| PART NO. | SIZE   | CTN/MSTR |
|----------|--------|----------|
| PFA615   | 1-1/2" | 1/50     |
| PFA620   | 2"     | 1/50     |
| PFA630   | 3"     | 1/25     |
| PFA640   | 4"     | 1/10     |

## 45° Street Elbow

Spg x H



- Used to change direction from a fitting hub to a pipe
- Sometimes called a "Street 1/8 bend"

| PART NO. | SIZE              | CTN/MSTR |
|----------|-------------------|----------|
| PSL715S  | 1-1/2" short turn | 1/100    |
| PSL716S  | 1-1/2" long turn  | 1/100    |
| PSL720   | 2"                | 1/50     |
| PSL730   | 3"                | 1/20     |
| PSL740   | 4"                | 1/10     |
| PSL760   | 6"                | 1/3      |

## 60° Elbow

H x H



- Used to change direction in piping
- Sometimes called a "OK bend"

| PART NO. | SIZE   | CTN/MSTR |
|----------|--------|----------|
| PFL915   | 1-1/2" | 1/40     |
| PFL930   | 3"     | 1/20     |

## 90° Vent Elbow

H x H



- Used to change direction in the "dry" portion of vent piping where water flow is not a consideration

| PART NO. | SIZE   | CTN/MSTR |
|----------|--------|----------|
| PFL715   | 1-1/2" | 1/20     |
| PFL720   | 2"     | 1/30     |
| PFL730   | 3"     | 1/10     |

## 90° Elbow

H x H



- Used to change direction in piping
- Sometimes called a "1/4 bend"

| PART NO. | SIZE        | CTN/MSTR |
|----------|-------------|----------|
| PFL814   | 1-1/4"      | 1/100    |
| PFL815   | 1-1/2"      | 1/100    |
| PFL820   | 2"          | 1/50     |
| PFL830   | 3"          | 1/25     |
| PFL840   | 4"          | 1/10     |
| PFL860   | 6"          | 1/5      |
| PFL821   | 2" x 1-1/2" | 1/20     |
| PFL834   | 4" x 3"     | 1/20     |

## 90° Elbow with Side Inlet

H x H x Spg/H



- Used to connect a branch line or vent at a change of direction in a larger vertical or horizontal pipe
- The inlet is constructed to accept a 2" fitting over its outside diameter or a 1-1/2" pipe into its inside diameter

| PART NO. | SIZE                      | CTN/MSTR |
|----------|---------------------------|----------|
| PFL131   | 3" x 2" Spg or 1-1/2" Hub | 1/20     |

## 90° Street Elbow

Spg x H



- Used to change direction in piping
- Sometimes called a "street 1/4 bend"

| PART NO. | SIZE   | CTN/MSTR |
|----------|--------|----------|
| PSL916   | 1-1/2" | 1/100    |
| PSL926   | 2"     | 1/50     |
| PSL936   | 3"     | 1/20     |
| PSL946   | 4"     | 1/10     |

## 90° Long Sweep Elbow

H x H



- Used to change direction in piping
- Sometimes called a "long turn 1/4 bend"

| PART NO. | SIZE   | CTN/MSTR |
|----------|--------|----------|
| PFL815L  | 1-1/2" | 1/50     |
| PFL820L  | 2"     | 1/25     |
| PFL830L  | 3"     | 1/10     |
| PFL840L  | 4"     | 1/5      |

## 90° Lowheel Inlet Elbow

H x H x Spg/H or H x H x H



- Used to connect a branch line or vent at a change of direction in a larger vertical or horizontal pipe
- The inlet is constructed to accept a 2" fitting over its outside diameter or a 1-1/2" pipe into its inside diameter

| PART NO. | SIZE                      | CTN/MSTR |
|----------|---------------------------|----------|
| PFL031   | 3" x 2" Spg or 1-1/2" Hub | 1/25     |
| PFL032   | 3" x 2" Hub               | 1/25     |

## Fitting C.O. Adapter

Spg x FPT



- Solvent welds into fitting hub and adapts to male threaded plug
- This fitting is a component part of "Fitting Cleanout with Threaded Plug"

| PART NO. | SIZE   | CTN/MSTR |
|----------|--------|----------|
| PFA614   | 1-1/2" | 1/50     |
| PFA619   | 2"     | 1/50     |
| PFA629   | 3"     | 1/25     |
| PFA639   | 4"     | 1/10     |
| PFA659   | 6"     | 1/10     |

## Cap

Hub



- Used for permanently or temporarily capping pipe

| PART NO. | SIZE   | CTN/MSTR |
|----------|--------|----------|
| PHC151   | 1-1/2" | 1/10     |
| PHC152   | 2"     | 1/5      |
| PHC153   | 3"     | 1/10     |
| PHC154   | 4"     | 1/5      |

## 22-1/2° Elbow

H x H



- Used to change direction in piping
- Sometimes called a "1/16 bend"

| PART NO. | SIZE   | CTN/MSTR |
|----------|--------|----------|
| PFL515   | 1-1/2" | 1/50     |
| PFL520   | 2"     | 1/25     |
| PFL530   | 3"     | 1/20     |
| PFL540   | 4"     | 1/15     |
| PFL560   | 6"     | 1/3      |

## 22-1/2° Street Elbow

H x Spg



- Used to change direction in piping
- Sometimes called a "Street 1/16 bend"

| PART NO. | SIZE   | CTN/MSTR |
|----------|--------|----------|
| PSL815   | 1-1/2" | 1/50     |
| PSL820   | 2"     | 1/25     |
| PSL830   | 3"     | 1/20     |
| PSL840   | 4"     | 1/10     |

## 45° Elbow

H x H



- Used to change direction in piping
- Sometimes called a "1/8 bend"

| PART NO. | SIZE              | CTN/MSTR |
|----------|-------------------|----------|
| PFL614   | 1-1/4"            | 1/100    |
| PFL615   | 1-1/2"            | 1/100    |
| PFL620   | 2"                | 1/50     |
| PFL630   | 3"                | 1/20     |
| PFL640   | 4"                | 1/10     |
| PFL660   | 6"                | 1/3      |
| PFL615S  | 1-1/2" short turn | 1/100    |
| PFL620S  | 2" short turn     | 1/100    |

## Double 90° Elbow

H x H x H



- Ideal for "back to back" sink or lavatory installations

| PART NO. | SIZE                 | CTN/MSTR |
|----------|----------------------|----------|
| PDL716   | 1-1/2"               | 1/20     |
| PDL736   | 3"                   | 1/10     |
| PDL722   | 2" x 1-1/2" x 1-1/2" | 1/25     |

## Wye

H x H x H



- Used when connecting a branch line into a horizontal drain pipe
- Also used in conjunction with a "twist-lok" plug to provide a cleanout in a drain pipe

| PART NO. | SIZE                 | CTN/MSTR |
|----------|----------------------|----------|
| PFY015   | 1-1/2"               | 1/50     |
| PFY020   | 2"                   | 1/25     |
| PFY030   | 3"                   | 1/25     |
| PFY040   | 4"                   | 1/5      |
| PFY060   | 6"                   | 1/4      |
| PFY021   | 2" x 1-1/2"          | 1/25     |
| PFY023   | 2" x 1-1/2" x 1-1/2" | 1/25     |
| PFY031   | 3" x 1-1/2"          | 1/15     |
| PFY032   | 3" x 2"              | 1/25     |
| PFY041   | 4" x 4" x 1-1/2"     | 1/10     |
| PFY042   | 4" x 2"              | 1/10     |
| PFY043   | 4" x 3"              | 1/10     |
| PFY064   | 6" x 4"              | 1/5      |

## Double Wye

H x H x H x H



- Used to bring two branch lines into a horizontal drain pipe

| PART NO. | SIZE              | CTN/MSTR |
|----------|-------------------|----------|
| PDY415   | 1-1/2"            | 1/40     |
| PDY420   | 2"                | 1/20     |
| PDY430   | 3"                | 1/15     |
| PDY440   | 4"                | 1/5      |
| PDY442   | 4" x 4" x 2" x 2" | 1/5      |
| PDY443   | 4" x 4" x 3" x 3" | 1/5      |

## Double Fixture Tee

H x H x H x H



| PART NO. | SIZE                          | CTN/MSTR |
|----------|-------------------------------|----------|
| PDT621   | 2" x 1-1/2" x 1-1/2" x 1-1/2" | 1/20     |

## Vent Tee

H x H x H



- Used primarily in seepage bed piping grids in conjunction with perforated pipe
- Used where flow characteristics are not a primary consideration

| PART NO. | SIZE   | CTN/MSTR |
|----------|--------|----------|
| PVT415   | 1-1/2" | 1/10     |
| PVT420   | 2"     | 1/10     |
| PVT430   | 3"     | 1/10     |
| PVT440   | 4"     | 1/10     |

## Long Turn Tee Wye

H x H x H



- Used in some plumbing code areas to connect a branch line into a vertical drain pipe instead of a conventional tee fitting
- Also used to connect horizontal branch pipe approaching a horizontal drain pipe on the perpendicular

| PART NO. | SIZE        | CTN/MSTR |
|----------|-------------|----------|
| PFY515L  | 1-1/2"      | 1/20     |
| PFY520L  | 2"          | 1/10     |
| PFY530L  | 3"          | 1/10     |
| PFY540L  | 4"          | 1/5      |
| PFY521   | 2" x 1-1/2" | 1/20     |
| PFY531   | 3" x 1-1/2" | 1/10     |
| PFY532   | 3" x 2"     | 1/10     |
| PFY542   | 4" x 2"     | 1/10     |
| PFY543   | 4" x 3"     | 1/5      |

## Cleanout Test Tee

H x H x FPT



- Used in conjunction with a threaded plug to provide a cleanout opening
- Teflon thread tape is recommended for threaded joints

| PART NO. | SIZE   | CTN/MSTR |
|----------|--------|----------|
| PCT416   | 1-1/2" | 1/20     |
| PCT421   | 2"     | 1/20     |
| PCT431   | 3"     | 1/10     |
| PCT441   | 4"     | 1/10     |

## Cleanout Test Tee with Cleanout Plug

H x H x FPT



- Used at the base of a vertical drain pipe to provide a cleanout opening flush with the finished wall

| PART NO. | SIZE   | CTN/MSTR |
|----------|--------|----------|
| PCT315   | 1-1/2" | 1/10     |
| PCT320   | 2"     | 1/10     |
| PCT330   | 3"     | 1/10     |
| PCT340   | 4"     | 1/5      |

## Sanitary Tee

H x H x H



- Used when connecting a branch line into a vertical drain pipe

| PART NO. | SIZE                 | CTN/MSTR |
|----------|----------------------|----------|
| PST114   | 1-1/4"               | 1/25     |
| PST115   | 1-1/2"               | 1/100    |
| PST120   | 2"                   | 1/35     |
| PST130   | 3"                   | 1/30     |
| PST140   | 4"                   | 1/5      |
| PST160   | 6"                   | 1/6      |
| PST121   | 2" x 1-1/2"          | 1/50     |
| PST122   | 2" x 1-1/2" x 2"     | 1/25     |
| PST123   | 2" x 1-1/2" x 1-1/2" | 1/25     |
| PST131   | 3" x 1-1/2"          | 1/20     |
| PST132   | 3" x 2"              | 1/10     |
| PST141   | 4" x 1-1/2"          | 1/10     |
| PST142   | 4" x 2"              | 1/10     |
| PST143   | 4" x 3"              | 1/10     |
| PST164   | 6" x 4"              | 1/6      |

## Sanitary Tee Street

Spg x H x H



| PART NO. | SIZE | CTN/MSTR |
|----------|------|----------|
| PSS140   | 4"   | 1/10     |

## Sanitary Tee with Right Side Inlet

H x H x H x H



• Provides for the connection of 2" vent or branch waste piping to a vertical pipe

| PART NO. | SIZE              | CTN/MSTR |
|----------|-------------------|----------|
| PST232   | 3" x 3" x 3" x 2" | 1/10     |

## Sanitary Tee with Left Side Inlet

H x H x H x H



• Provides for the connection of 2" vent or branch waste piping to a vertical pipe

| PART NO. | SIZE              | CTN/MSTR |
|----------|-------------------|----------|
| PSL132   | 3" x 3" x 3" x 2" | 1/10     |

## Sanitary Tee with Right and Left Side Inlet

H x H x Spg/H x Spg/H



### Sanitary Tee with Right and Left Side Inlet

- Provides for the connection of 1-1/2" or 2" vent or branch waste piping to a vertical pipe as well as receiving the discharge of a water closet
- The inlets are constructed to accept a 2" fitting hub over their outside diameter or a 1-1/2" pipe into their inside diameter

| PART NO. | SIZE                                     | CTN/MSTR |
|----------|--|----------|
| PSL031   | 3" x 3" x 3" x 1-1/2" / 2" x 1-1/2" / 2" | 1/10     |

### Sanitary Tee with Right and Left Side Inlet

- Provides for the connection of 2" vent or branch waste piping to a vertical pipe as well as receive the discharge of a water closet

| PART NO. | SIZE                   | CTN/MSTR |
|----------|------------------------|----------|
| PSL042   | 4" x 4" x 4" x 2" x 2" | 1/5      |

## Double Sanitary Tee

H x H x H x H



• Used to bring two branch lines into a vertical drain pipe

| PART NO. | SIZE                      | CTN/MSTR |
|----------|---------------------------|----------|
| PDT515   | 1-1/2"                    | 1/25     |
| PDT520   | 2"                        | 1/20     |
| PDT530   | 3"                        | 1/20     |
| PDT540   | 4"                        | 1/4      |
| PDT521   | 2" x 2" x 1-1/2" x 1-1/2" | 1/15     |
| PDT531   | 3" x 3" x 1-1/2" x 1-1/2" | 1/20     |
| PDT532   | 3" x 3" x 2" x 2"         | 1/10     |
| PDT542   | 4" x 4" x 2" x 2"         | 1/5      |
| PDT543   | 4" x 4" x 3" x 3"         | 1/5      |

## Two-Way Cleanout Tee

H x H x H



• Used with a vertical pipe stack, this fitting provides for above ground level access to piping

| PART NO. | SIZE | CTN/MSTR |
|----------|------|----------|
| PTC633   | 3"   | 1/10     |
| PTC644   | 4"   | 1/5      |

## P-Trap LA Pattern with Union

SJ x H



• Used to prevent the passage of sewer gas from the plumbing system into house through the plumbing fixture drain, when local code doesn't permit the use of slip coupled traps

| PART NO. | SIZE   | CTN/MSTR |
|----------|--------|----------|
| PPT715   | 1-1/2" | 1/20     |

## P-Trap with Union

H x H



• Used to prevent the passage of sewer gas from the plumbing system into house through the plumbing fixture drain

| PART NO. | SIZE   | CTN/MSTR |
|----------|--------|----------|
| PPT315   | 1-1/2" | 1/20     |
| PPT320   | 2"     | 1/25     |

## P-Trap with Solvent Weld Joint

H x H



- Used to prevent the passage of sewer gas from the plumbing system into house through the plumbing fixture drain

| PART NO. | SIZE   | CTN/MSTR |
|----------|--------|----------|
| PPT515   | 1-1/2" | 1/25     |
| PPT520   | 2"     | 1/20     |
| PPT530   | 3"     | 1/10     |
| PPT540   | 4"     | 1/4      |

## P-Trap with Cleanout and Solvent Weld Joint

H x H



- Used to prevent the passage of sewer gas from the plumbing system into house through the plumbing fixture drain

| PART NO. | SIZE   | CTN/MSTR |
|----------|--------|----------|
| PPT415   | 1-1/2" | 1/10     |
| PPT420   | 2"     | 1/10     |

## P-Trap U-Bend

H x H



- Bottom part of trap furnished without cleanout

| PART NO. | SIZE   | CTN/MSTR |
|----------|--------|----------|
| PPT015   | 1-1/2" | 1/20     |
| PPT020   | 2"     | 1/20     |
| PPT030   | 3"     | 1/15     |
| PPT040   | 4"     | 1/10     |

## P-Trap Elbow

Spg x H Short Sweep



- Used to change direction in the "dry" portion of vent piping where water flow is not a consideration

| PART NO. | SIZE   | CTN/MSTR |
|----------|--------|----------|
| PPT915S  | 1-1/2" | 1/100    |
| PPT920S  | 2"     | 1/20     |

## Swivel Drum Trap

H x H



- PVC version of the old style bathtub "drum trap"
- Largely replaced today by the conventional 1-1/2" P-trap

| PART NO. | SIZE             | CTN/MSTR |
|----------|------------------|----------|
| PDT715   | 3" x 6" x 1-1/2" | 1/15     |

## Female Trap Adapter with Self Sealing Nut

H x SJT



- Utilized to adapt PVC pipe to tubular traps at wall or floor
- Utilizes special washer which seals to either 1-1/2" or 1-1/4" tubular products, reducing the number of SKU's needed in inventory
- Solvent welds over a 1-1/2" DWV pipe
- Sometimes referred to as a "marvel"

| PART NO. | SIZE                      | CTN/MSTR |
|----------|---------------------------|----------|
| PTA215   | 1-1/2"                    | 1/100    |
| PTA221   | 1-1/2" x 1-1/2" or 1-1/4" | 1/100    |

## Male Trap Adapter less Washer and Nuts

Spg x MPT



- Adapts fitting hub to standard female pipe threads
- Teflon thread tape is recommended for threaded joints

| PART NO. | SIZE                 | CTN/MSTR |
|----------|----------------------|----------|
| PTA415   | 1-1/2" (less washer) | 1/100    |
| PTA420   | 2" (less washer)     | 1/100    |

## Male Trap Adapter with Washer and Nuts

Spg x SJT



- Adapts PVC fitting hub to tubular traps in a wall or floor
- Utilizes special washer which seals to either 1-1/2" or 1-1/4" tubular products, reducing the number of SKU's needed in inventory
- Solvent welds into a 1-1/2" DWV fitting hub
- Sometimes called a "marvel"

| PART NO. | SIZE                                    | CTN/MSTR |
|----------|---|----------|
| PTA315   | 1-1/2" (with washer)                    | 1/50     |
| PTA311   | 1-1/2" x 1-1/2" or 1-1/4" (with washer) | 1/75     |

## Reducing Closet Bend

Spg x H



- Used to change direction in piping and size of pipe directly into fitting hub
- Usually a closet flange directly under a toilet
- Works well in tight space applications on second floors

| PART NO. | SIZE    | CTN/MSTR |
|----------|---------|----------|
| PCB934   | 4" x 3" | 1/20     |

## Expansion Joint

H x H



- To provide for expansion in straight vertical pipe runs exceeding 35 feet in length

| PART NO. | SIZE | CTN/MSTR |
|----------|------|----------|
| PEJ530   | 3"   | 1/10     |
| PEJ540   | 4"   | 1/10     |



## Cast Iron No Hub Adapter

Spg x H



- Adapts no hub elastomer coupling to DWV spigot
- Provides a proper method of adapting from no-hub cast iron pipe utilizing the standard no-hub clamp ring

| PART NO. | SIZE | CTN/MSTR |
|----------|------|----------|
| PNH120   | 2"   | 1/100    |
| PNH130   | 3"   | 1/20     |
| PNH140   | 4"   | 1/10     |

## Adapter Bushing

Sewer Spg x DWV H



- Adapts sewer and drain hub to DWV spigot

| PART NO. | SIZE    | CTN/MSTR |
|----------|---------|----------|
| PAB243   | 4" x 3" | 1/20     |

## Cast Iron Hub Adapter

Spg x H



- Adapts cast iron hub to DWV Spigot
- Can be joined to cast iron with Genova plastic lead or hot molten lead

| PART NO. | SIZE        | CTN/MSTR |
|----------|-------------|----------|
| PHA520   | 2"          | 1/25     |
| PHA521   | 2" x 1-1/2" | 1/20     |
| PHA530   | 3"          | 1/20     |
| PHA540   | 4"          | 1/10     |
| PHA543   | 4" x 3"     | 1/20     |

## Cast Iron Spigot Adapter

H x H



- Adapts cast iron spigot to DWV spigot
- Adapts Sch. 40 pipe to 4" cast iron spigot

| PART NO. | SIZE | CTN/MSTR |
|----------|------|----------|
| PSA740   | 4"   | 1/10     |

## Adapter Coupling

Sewer H x DWV H



- Adapts sewer and drain spigot to DWV spigot

| PART NO. | SIZE    | CTN/MSTR |
|----------|---------|----------|
| PAC543   | 4" x 3" | 1/20     |

## Adapter Bushing

DWV Spg x Sewer H



- Adapts DWV hub to sewer and drain spigot

| PART NO. | SIZE | CTN/MSTR |
|----------|------|----------|
| PAB75340 | 4"   | 1/25     |

## HEX Bushing

M x F, Concentric



| GALV. PART NO. | SIZE            | CTN/MSTR  |
|----------------|-----------------|-----------|
| G144-0007      | 1/4" x 1/8"     | 120/1,440 |
| G144-0032      | 3/8" x 1/4"     | 75/900    |
| G144-0033      | 3/8" x 1/8"     | 75/900    |
| G144-0058      | 1/2" x 3/8"     | 100/1,200 |
| G144-0059      | 1/2" x 1/4"     | 100/1,200 |
| G144-0060      | 1/2" x 1/8"     | 100/1,200 |
| G144-0107      | 3/4" x 1/2"     | 50/600    |
| G144-0108      | 3/4" x 3/8"     | 50/600    |
| G144-0109      | 3/4" x 1/4"     | 50/600    |
| G144-0110      | 3/4" x 1/8"     | 50/600    |
| G144-0159      | 1" x 3/4"       | 50/400    |
| G144-0160      | 1" x 1/2"       | 50/400    |
| G144-0161      | 1" x 3/8"       | 50/400    |
| G144-0162      | 1" x 1/4"       | 50/400    |
| G144-0222      | 1-1/4" x 1"     | 30/240    |
| G144-0223      | 1-1/4" x 3/4"   | 30/240    |
| G144-0224      | 1-1/4" x 1/2"   | 30/240    |
| G144-0225      | 1-1/4" x 3/8"   | 30/240    |
| G144-0226      | 1-1/4" x 1/4"   | 30/240    |
| G144-0303      | 1-1/2" x 1-1/4" | 25/150    |
| G144-0304      | 1-1/2" x 1"     | 25/150    |
| G144-0305      | 1-1/2" x 3/4"   | 25/150    |
| G144-0306      | 1-1/2" x 1/2"   | 25/150    |
| G144-0307      | 1-1/2" x 3/8"   | 25/150    |
| G144-0308      | 1-1/2" x 1/4"   | 25/150    |
| G144-0398      | 2" x 1-1/2"     | 20/120    |
| G144-0399      | 2" x 1-1/4"     | 20/120    |
| G144-0400      | 2" x 1"         | 20/120    |
| G144-0401      | 2" x 3/4"       | 20/120    |
| G144-0402      | 2" x 1/2"       | 20/120    |
| G144-0532      | 2-1/2" x 1-1/2" | 15/60     |
| G144-0533      | 2-1/2" x 1-1/4" | 15/60     |
| G144-0534      | 2-1/2" x 1"     | 15/60     |
| G144-0535      | 2-1/2" x 3/4"   | 15/60     |
| G144-0662      | 3" x 2-1/2"     | 12/48     |
| G144-0663      | 3" x 2"         | 12/48     |
| G144-0664      | 3" x 1-1/2"     | 12/48     |
| G144-0665      | 3" x 1-1/4"     | 12/48     |
| G144-0666      | 3" x 1"         | 12/48     |
| G144-0790      | 3-1/2" x 3"     | 8/32      |
| G144-0870      | 4" x 3"         | 5/20      |
| G144-0871      | 4" x 2-1/2"     | 5/20      |
| G144-0872      | 4" x 2"         | 5/20      |
| G144-0873      | 4" x 1-1/2"     | 5/20      |
| G144-1109      | 6" x 4"         | 4/8       |

## Extension Piece

M x F



- CSA approved
- UL listed
- FM approved
- NSF 61-4 and AB1953
- Meets ASTM A197, ASME B16.3, and ASTM A153

| GALV. PART NO. | SIZE   | CTN/MSTR |
|----------------|--------|----------|
| G335-0050      | 1/2"   | 75/600   |
| G335-0100      | 3/4"   | 40/320   |
| G335-0150      | 1"     | 30/180   |
| G335-0215      | 1-1/4" | 30/120   |

## Cap



- CSA approved
- UL listed
- FM approved
- NSF 61-4 and AB1953
- Meets ASTM A197, ASME B16.3, and ASTM A153

| GALV. PART NO. | SIZE   | CTN/MSTR  |
|----------------|--------|-----------|
| G155-0001      | 1/8"   | 120/1,440 |
| G155-0002      | 1/4"   | 80/960    |
| G155-0025      | 3/8"   | 60/720    |
| G155-0050      | 1/2"   | 75/600    |
| G155-0100      | 3/4"   | 40/320    |
| G155-0150      | 1"     | 35/200    |
| G155-0215      | 1-1/4" | 25/160    |
| G155-0295      | 1-1/2" | 25/108    |
| G155-0390      | 2"     | 18/72     |
| G155-0520      | 2-1/2" | 14/56     |
| G155-0650      | 3"     | 12/36     |
| G155-0860      | 4"     | 7/21      |
| G155-0975      | 5"     | 8/16      |
| G155-1100      | 6"     | 4/8       |

## Coupling, Banded

F x F



- CSA approved
- UL listed
- FM approved
- NSF 61-4 and AB1953
- Meets ASTM A197, ASME B16.3, and ASTM A153

| GALV. PART NO. | SIZE   | CTN/MSTR |
|----------------|--------|----------|
| G165-0001      | 1/8"   | 70/840   |
| G165-0002      | 1/4"   | 40/480   |
| G165-0025      | 3/8"   | 50/600   |
| G165-0050      | 1/2"   | 60/480   |
| G165-0100      | 3/4"   | 50/300   |
| G165-0150      | 1"     | 25/150   |
| G165-0215      | 1-1/4" | 32/128   |
| G165-0295      | 1-1/2" | 18/72    |
| G165-0390      | 2"     | 12/48    |
| G165-0520      | 2-1/2" | 4/32     |
| G165-0650      | 3"     | 12/24    |
| G165-0860      | 4"     | 3/12     |
| G165-1100      | 6"     | 3/6      |

## Reducing Coupling, Banded

F x F, Concentric



- CSA approved
- UL listed
- FM approved
- NSF 61-4 and AB1953
- Meets ASTM A197, ASME B16.3, and ASTM A153



| GALV. PART NO. | SIZE            | CTN/MSTR |
|----------------|-----------------|----------|
| G165-0007      | 1/4" x 1/8"     | 50/600   |
| G165-0032      | 3/8" x 1/4"     | 30/360   |
| G165-0033      | 3/8" x 1/8"     | 35/420   |
| G165-0058      | 1/2" x 3/8"     | 40/480   |
| G165-0059      | 1/2" x 1/4"     | 50/600   |
| G165-0060      | 1/2" x 1/8"     | 50/600   |
| G165-0107      | 3/4" x 1/2"     | 60/360   |
| G165-0108      | 3/4" x 3/8"     | 30/360   |
| G165-0109      | 3/4" x 1/4"     | 30/360   |
| G165-0159      | 1" x 3/4"       | 25/200   |
| G165-0160      | 1" x 1/2"       | 40/240   |
| G165-0161      | 1" x 3/8"       | 40/240   |
| G165-0162      | 1" x 1/4"       | 45/270   |
| G165-0222      | 1-1/4" x 1"     | 20/120   |
| G165-0223      | 1-1/4" x 3/4"   | 25/150   |
| G165-0224      | 1-1/4" x 1/2"   | 25/150   |
| G165-0303      | 1-1/2" x 1-1/4" | 24/96    |
| G165-0304      | 1-1/2" x 1"     | 25/100   |
| G165-0305      | 1-1/2" x 3/4"   | 30/120   |
| G165-0306      | 1-1/2" x 1/2"   | 20/120   |
| G165-0307      | 1-1/2" x 3/8"   | 30/120   |
| G165-0398      | 2" x 1-1/2"     | 12/72    |
| G165-0399      | 2" x 1-1/4"     | 14/72    |
| G165-0400      | 2" x 1"         | 14/84    |
| G165-0401      | 2" x 3/4"       | 14/84    |
| G165-0402      | 2" x 1/2"       | 14/84    |
| G165-0531      | 2-1/2" x 2"     | 10/40    |
| G165-0532      | 2-1/2" x 1-1/2" | 10/40    |
| G165-0533      | 2-1/2" x 1-1/4" | 10/40    |
| G165-0534      | 2-1/2" x 1"     | 10/40    |
| G165-0662      | 3" x 2-1/2"     | 12/24    |
| G165-0663      | 3" x 2"         | 8/32     |
| G165-0664      | 3" x 1-1/2"     | 8/32     |
| G165-0665      | 3" x 1-1/4"     | 8/32     |
| G165-0666      | 3" x 1"         | 8/32     |
| G165-0870      | 4" x 3"         | 6/12     |
| G165-0871      | 4" x 2-1/2"     | 6/18     |
| G165-0872      | 4" x 2"         | 6/12     |
| G165-1109      | 6" x 4"         | 4/8      |

## 90° Reducing Elbow, Banded

F x F



- CSA approved
- UL listed
- FM approved
- NSF 61-4 and AB1953
- Meets ASTM A197, ASME B16.3, and ASTM A153



| GALV. PART NO. | SIZE            | CTN/MSTR |
|----------------|-----------------|----------|
| G235-0058      | 1/2" x 3/8"     | 50/400   |
| G235-0059      | 1/2" x 1/4"     | 40/480   |
| G235-0107      | 3/4" x 1/2"     | 40/240   |
| G235-0108      | 3/4" x 3/8"     | 50/300   |
| G235-0159      | 1" x 3/4"       | 25/150   |
| G235-0160      | 1" x 1/2"       | 30/180   |
| G235-0222      | 1-1/4" x 1"     | 20/80    |
| G235-0223      | 1-1/4" x 3/4"   | 30/120   |
| G235-0224      | 1-1/4" x 1/2"   | 35/140   |
| G235-0303      | 1-1/2" x 1-1/4" | 15/60    |
| G235-0304      | 1-1/2" x 1"     | 20/80    |
| G235-0305      | 1-1/2" x 3/4"   | 15/90    |
| G235-0306      | 1-1/2" x 1/2"   | 25/100   |
| G235-0398      | 2" x 1-1/2"     | 10/40    |
| G235-0399      | 2" x 1-1/4"     | 10/40    |
| G235-0400      | 2" x 1"         | 14/56    |
| G235-0401      | 2" x 3/4"       | 15/60    |
| G235-0532      | 2-1/2" x 1-1/2" | 6/24     |
| G235-0533      | 2-1/2" x 1-1/4" | 6/40     |
| G235-0662      | 3" x 2-1/2"     | 4/16     |
| G235-0663      | 3" x 2"         | 6/18     |

## 90° Elbow, Banded

F x F



- CSA approved
- UL listed
- FM approved
- NSF 61-4 and AB1953
- Meets ASTM A197, ASME B16.3, and ASTM A153



| GALV. PART NO. | SIZE   | CTN/MSTR |
|----------------|--------|----------|
| G235-0001      | 1/8"   | 50/600   |
| G235-0002      | 1/4"   | 35/420   |
| G235-0025      | 3/8"   | 45/540   |
| G235-0050      | 1/2"   | 50/400   |
| G235-0100      | 3/4"   | 35/210   |
| G235-0150      | 1"     | 20/120   |
| G235-0215      | 1-1/4" | 20/80    |
| G235-0295      | 1-1/2" | 20/60    |
| G235-0390      | 2"     | 8/32     |
| G235-0520      | 2-1/2" | 8/18     |
| G235-0650      | 3"     | 7/14     |
| G235-0860      | 4"     | 2/6      |
| G235-1100      | 6"     | 1/2      |

## 90° Street Elbow, Banded

M x F



- CSA approved
- UL listed
- FM approved
- NSF 61-4 and AB1953
- Meets ASTM A197, ASME B16.3, and ASTM A153



| GALV. PART NO. | SIZE   | CTN/MSTR |
|----------------|--------|----------|
| G254-0001      | 1/8"   | 60/720   |
| G254-0002      | 1/4"   | 35/420   |
| G254-0025      | 3/8"   | 40/480   |
| G254-0050      | 1/2"   | 60/360   |
| G254-0100      | 3/4"   | 35/210   |
| G254-0150      | 1"     | 30/120   |
| G254-0215      | 1-1/4" | 25/75    |
| G254-0295      | 1-1/2" | 18/54    |
| G254-0390      | 2"     | 10/30    |
| G254-0520      | 2-1/2" | 9/18     |
| G254-0650      | 3"     | 1/14     |
| G254-0860      | 4"     | 1/6      |

## 45° Elbow, Banded

F x F



- CSA approved
- UL listed
- FM approved
- NSF 61-4 and AB1953
- Meets ASTM A197, ASME B16.3, and ASTM A153



| GALV. PART NO. | SIZE   | CTN/MSTR |
|----------------|--------|----------|
| G290-0001      | 1/8"   | 50/600   |
| G290-0002      | 1/4"   | 30/360   |
| G290-0025      | 3/8"   | 50/600   |
| G290-0050      | 1/2"   | 50/400   |
| G290-0100      | 3/4"   | 40/240   |
| G290-0150      | 1"     | 20/120   |
| G290-0215      | 1-1/4" | 20/80    |
| G290-0295      | 1-1/2" | 15/60    |
| G290-0390      | 2"     | 12/36    |
| G290-0520      | 2-1/2" | 1/27     |
| G290-0650      | 3"     | 1/20     |
| G290-0860      | 4"     | 1/6      |

## 45° Street Elbow, Banded

M x F



- CSA approved
- UL listed
- FM approved
- NSF 61-4 and AB1953
- Meets ASTM A197, ASME B16.3, and ASTM A153



| GALV. PART NO. | SIZE   | CTN/MSTR |
|----------------|--------|----------|
| G295-0002      | 1/4"   | 40/480   |
| G295-0050      | 1/2"   | 75/450   |
| G295-0100      | 3/4"   | 40/240   |
| G295-0150      | 1"     | 25/150   |
| G295-0215      | 1-1/4" | 20/80    |
| G295-0295      | 1-1/2" | 20/60    |
| G295-0390      | 2"     | 12/36    |
| G295-0650      | 3"     | 1/18     |

## Cross, Banded

F x F x F x F



- CSA approved
- UL listed
- FM approved
- NSF 61-4 and AB1953
- Meets ASTM A197, ASME B16.3, and ASTM A153



| GALV. PART NO. | SIZE   | CTN/MSTR |
|----------------|--------|----------|
| G195-0002      | 1/4"   | 80/480   |
| G195-0025      | 3/8"   | 50/300   |
| G195-0050      | 1/2"   | 45/180   |
| G195-0100      | 3/4"   | 30/120   |
| G195-0150      | 1"     | 20/60    |
| G195-0215      | 1-1/4" | 20/40    |
| G195-0295      | 1-1/2" | 18/36    |
| G195-0390      | 2"     | 10/20    |

## Floor Flange



- CSA approved
- UL listed
- FM approved
- NSF 61-4 and AB1953
- Meets ASTM A197, ASME B16.3, and ASTM A153



| GALV. PART NO. | SIZE   | CTN/MSTR |
|----------------|--------|----------|
| G355-0025      | 3/8"   | 25/150   |
| G355-0050      | 1/2"   | 25/100   |
| G355-0100      | 3/4"   | 20/80    |
| G355-0150      | 1"     | 20/60    |
| G355-0215      | 1-1/4" | 15/60    |
| G355-0295      | 1-1/2" | 12/48    |
| G355-0390      | 2"     | 8/32     |

## Locknut/Backnut



- CSA approved
- UL listed
- FM approved
- NSF 61-4 and AB1953
- Meets ASTM A197, ASME B16.3, and ASTM A153



| GALV. PART NO. | SIZE   | CTN/MSTR |
|----------------|--------|----------|
| G375-0002      | 1/4"   | 125/1500 |
| G375-0050      | 1/2"   | 100/1200 |
| G375-0150      | 1"     | 60/480   |
| G375-0215      | 1-1/4" | 60/360   |
| G375-0295      | 1-1/2" | 45/270   |
| G375-0390      | 2"     | 25/150   |

## Street Tee, Banded

F x M x F



- CSA approved
- UL listed
- FM approved
- NSF 61-4 and AB1953
- Meets ASTM A197, ASME B16.3, and ASTM A153



| GALV. PART NO. | SIZE | CTN/MSTR |
|----------------|------|----------|
| G486-0100      | 3/4" | 25/150   |
| G486-0150      | 1"   | 20/80    |

## Tee, Banded

F x F x F



- CSA approved
- UL listed
- FM approved
- NSF 61-4 and AB1953
- Meets ASTM A197, ASME B16.3, and ASTM A153



| GALV. PART NO. | SIZE   | CTN/MSTR |
|----------------|--------|----------|
| G460-0001      | 1/8"   | 80/960   |
| G460-0002      | 1/4"   | 50/600   |
| G460-0025      | 3/8"   | 45/360   |
| G460-0050      | 1/2"   | 40/240   |
| G460-0100      | 3/4"   | 35/140   |
| G460-0150      | 1"     | 20/80    |
| G460-0215      | 1-1/4" | 14/56    |
| G460-0295      | 1-1/2" | 15/45    |
| G460-0390      | 2"     | 10/30    |
| G460-0520      | 2-1/2" | 8/16     |
| G460-0650      | 3"     | 6/12     |
| G460-0860      | 4"     | 2/6      |

## Reducing Tee, Banded

F x F x F



- CSA approved
- UL listed
- FM approved
- NSF 61-4 and AB1953
- Meets ASTM A197, ASME B16.3, and ASTM A153



| GALV. PART NO. | SIZE                 | CTN/MSTR |
|----------------|----------------------|----------|
| G460-0057      | 1/2" x 3/4"          | 30/180   |
| G460-0058      | 1/2" x 3/8"          | 45/270   |
| G460-0059      | 1/2" x 1/4"          | 50/300   |
| G460-0106      | 3/4" x 1"            | 20/120   |
| G460-0107      | 3/4" x 1/2"          | 45/180   |
| G460-0108      | 3/4" x 3/8"          | 45/180   |
| G460-0109      | 3/4" x 1/4"          | 50/200   |
| G460-0116      | 3/4" x 1/2" x 1"     | 35/140   |
| G460-0117      | 3/4" x 1/2" x 3/4"   | 40/160   |
| G460-0118      | 3/4" x 1/2" x 1/2"   | 30/180   |
| G460-0157      | 1" x 1-1/2"          | 15/60    |
| G460-0159      | 1" x 3/4"            | 25/100   |
| G460-0160      | 1" x 1/2"            | 30/120   |
| G460-0162      | 1" x 1/4"            | 25/150   |
| G460-0169      | 1" x 3/4" x 1"       | 15/90    |
| G460-0170      | 1" x 3/4" x 3/4"     | 25/100   |
| G460-0171      | 1" x 3/4" x 1/2"     | 25/120   |
| G460-0180      | 1" x 1/2" x 1"       | 15/90    |
| G460-0181      | 1" x 1/2" x 3/4"     | 30/120   |
| G460-0182      | 1" x 1/2" x 1/2"     | 20/120   |
| G460-0215      | 1-1/4" x 2"          | 14/56    |
| G460-0221      | 1-1/4" x 1-1/2"      | 14/56    |
| G460-0222      | 1-1/4" x 1"          | 16/64    |
| G460-0223      | 1-1/4" x 3/4"        | 18/72    |
| G460-0224      | 1-1/4" x 1/2"        | 20/80    |
| G460-0234      | 1-1/4" x 1" x 1-1/4" | 15/60    |
| G460-0235      | 1-1/4" x 1" x 1"     | 18/72    |
| G460-0236      | 1-1/4" x 1" x 3/4"   | 18/72    |
| G460-0237      | 1-1/4" x 1" x 1/2"   | 18/72    |

## Reducing Tee, Banded (cont.)

| GALV. PART NO. | SIZE                     | CTN/MSTR |
|----------------|--------------------------|----------|
| G460-0245      | 1-1/4" x 3/4" x 1-1/4"   | 15/60    |
| G460-0246      | 1-1/4" x 3/4" x 1"       | 20/80    |
| G460-0247      | 1-1/4" x 3/4" x 3/4"     | 20/80    |
| G460-0258      | 1-1/4" x 1/2" x 3/4"     | 25/50    |
| G460-0303      | 1-1/2" x 1-1/4"          | 15/45    |
| G460-0304      | 1-1/2" x 1"              | 13/52    |
| G460-0305      | 1-1/2" x 3/4"            | 10/60    |
| G460-0306      | 1-1/2" x 1/2"            | 18/72    |
| G460-0315      | 1-1/2" x 1-1/4" x 1-1/2" | 10/40    |
| G460-0316      | 1-1/2" x 1-1/4" x 1-1/4" | 12/48    |
| G460-0317      | 1-1/2" x 1-1/4" x 1"     | 14/56    |
| G460-0318      | 1-1/2" x 1-1/4" x 3/4"   | 16/64    |
| G460-0319      | 1-1/2" x 1-1/4" x 1/2"   | 16/64    |
| G460-0328      | 1-1/2" x 1" x 1-1/2"     | 14/56    |
| G460-0330      | 1-1/2" x 1" x 1"         | 15/60    |
| G460-0340      | 1-1/2" x 3/4" x 1-1/4"   | 15/60    |
| G460-0350      | 1-1/2" x 1/2" x 1-1/2"   | 12/48    |
| G460-0398      | 2" x 1-1/2"              | 16/32    |
| G460-0399      | 2" x 1-1/4"              | 8/32     |
| G460-0400      | 2" x 1"                  | 12/36    |
| G460-0401      | 2" x 3/4"                | 10/40    |
| G460-0402      | 2" x 1/2"                | 10/40    |
| G460-0414      | 2" x 1-1/2" x 1-1/2"     | 8/32     |
| G460-0415      | 2" x 1-1/2" x 1-1/4"     | 8/32     |
| G460-0416      | 2" x 1-1/2" x 1"         | 10/40    |
| G460-0429      | 2" x 1-1/4" x 2"         | 13/26    |
| G460-0430      | 2" x 1-1/4" x 1-1/2"     | 8/32     |
| G460-0431      | 2" x 1-1/4" x 1-1/4"     | 12/36    |
| G460-0444      | 2" x 1" x 2"             | 8/32     |
| G460-0447      | 2" x 1" x 1"             | 12/48    |
| G460-0470      | 2" x 1/2" x 2"           | 8/32     |
| G460-0531      | 2-1/2" x 2"              | 4/16     |
| G460-0532      | 2-1/2" x 1-1/2"          | 5/15     |
| G460-0534      | 2-1/2" x 1"              | 12/24    |
| G460-0536      | 2-1/2" x 1/2"            | 12/24    |
| G460-0662      | 3" x 2-1/2"              | 6/12     |
| G460-0663      | 3" x 2"                  | 4/12     |
| G460-0665      | 3" x 1-1/4"              | 4/12     |
| G460-0666      | 3" x 1"                  | 5/15     |
| G460-0870      | 4" x 3"                  | 2/6      |
| G460-0872      | 4" x 2"                  | 2/8      |

## Square Head Plug

M



- Cored
- CSA approved
- UL listed
- FM approved
- NSF 61-4 and AB1953
- Meets ASTM A197, ASME B16.3, and ASTM A153



| GALV. PART NO. | SIZE   | CTN/MSTR |
|----------------|--------|----------|
| G396-0001      | 1/8"   | 300/3600 |
| G396-0002      | 1/4"   | 150/1800 |
| G396-0025      | 3/8"   | 100/1200 |
| G396-0050      | 1/2"   | 50/600   |
| G396-0100      | 3/4"   | 30/360   |
| G396-0150      | 1"     | 20/240   |
| G396-0215      | 1-1/4" | 40/240   |
| G396-0295      | 1-1/2" | 30/180   |
| G396-0390      | 2"     | 20/120   |
| G396-0520      | 2-1/2" | 8/64     |
| G396-0650      | 3"     | 8/48     |
| G396-0860      | 4"     | 8/16     |

## Union



- Brass to iron seat
- CSA approved
- UL listed
- FM approved
- NSF 61-4 and AB1953
- Meets ASTM A197, ASME B16.3, and ASTM A153



| GALV. PART NO. | SIZE   | CTN/MSTR |
|----------------|--------|----------|
| G657-0001      | 1/8"   | 30/360   |
| G657-0002      | 1/4"   | 20/240   |
| G657-0025      | 3/8"   | 20/240   |
| G657-0050      | 1/2"   | 50/200   |
| G657-0100      | 3/4"   | 35/140   |
| G657-0150      | 1"     | 20/80    |
| G657-0215      | 1-1/4" | 15/60    |
| G657-0295      | 1-1/2" | 10/40    |
| G657-0390      | 2"     | 6/24     |
| G657-0520      | 2-1/2" | 4/16     |
| G657-0650      | 3"     | 7/14     |
| G657-0860      | 4"     | 7/7      |

## Pipe Nipples



| GALV. PART NO. | SIZE          | CTN/MSTR |
|----------------|---------------|----------|
| 50100          | 1/8" x Close  | 25/400   |
| 50110          | 1/8" x 10"    | 25/200   |
| 50111          | 1/8" x 11"    | 25/200   |
| 50112          | 1/8" x 12"    | 25/200   |
| 50115          | 1/8" x 1-1/2" | 25/400   |
| 50120          | 1/8" x 2"     | 25/400   |
| 50125          | 1/8" x 2-1/2" | 25/400   |
| 50130          | 1/8" x 3"     | 25/400   |
| 50135          | 1/8" x 3-1/2" | 25/400   |
| 50140          | 1/8" x 4"     | 25/400   |
| 50145          | 1/8" x 4-1/2" | 25/400   |
| 50150          | 1/8" x 5"     | 25/400   |
| 50155          | 1/8" x 5-1/2" | 25/400   |
| 50160          | 1/8" x 6"     | 25/400   |
| 50170          | 1/8" x 7"     | 25/200   |
| 50180          | 1/8" x 8"     | 25/200   |
| 50190          | 1/8" x 9"     | 25/200   |
| 50200          | 1/4" x Close  | 25/400   |
| 50210          | 1/4" x 10"    | 25/200   |
| 50211          | 1/4" x 11"    | 25/200   |
| 50212          | 1/4" x 12"    | 25/200   |
| 50215          | 1/4" x 1-1/2" | 25/400   |
| 50220          | 1/4" x 2"     | 25/400   |
| 50225          | 1/4" x 2-1/2" | 25/400   |
| 50230          | 1/4" x 3"     | 25/400   |
| 50235          | 1/4" x 3-1/2" | 25/400   |
| 50240          | 1/4" x 4"     | 25/400   |
| 50245          | 1/4" x 4-1/2" | 25/400   |
| 50250          | 1/4" x 5"     | 25/400   |
| 50255          | 1/4" x 5-1/2" | 25/400   |
| 50260          | 1/4" x 6"     | 25/400   |
| 50270          | 1/4" x 7"     | 25/200   |
| 50280          | 1/4" x 8"     | 25/200   |
| 50290          | 1/4" x 9"     | 25/200   |
| 50300          | 3/8" x Close  | 25/400   |
| 50310          | 3/8" x 10"    | 25/100   |
| 50312          | 3/8" x 12"    | 25/100   |
| 50315          | 3/8" x 1-1/2" | 25/400   |
| 50320          | 3/8" x 2"     | 25/400   |
| 50325          | 3/8" x 2-1/2" | 25/400   |
| 50330          | 3/8" x 3"     | 25/400   |
| 50335          | 3/8" x 3-1/2" | 25/400   |
| 50340          | 3/8" x 4"     | 25/400   |
| 50345          | 3/8" x 4-1/2" | 25/400   |
| 50350          | 3/8" x 5"     | 25/300   |
| 50355          | 3/8" x 5-1/2" | 25/300   |
| 50360          | 3/8" x 6"     | 25/300   |
| 50370          | 3/8" x 7"     | 25/150   |
| 50380          | 3/8" x 8"     | 25/150   |
| 50500          | 1/2" x Close  | 25/400   |
| 50510          | 1/2" x 10"    | 25/100   |
| 50511          | 1/2" x 11"    | 25/100   |
| 50512          | 1/2" x 12"    | 25/100   |
| 50515          | 1/2" x 1-1/2" | 25/400   |
| 50520          | 1/2" x 2"     | 25/400   |
| 50525          | 1/2" x 2-1/2" | 25/300   |
| 50530          | 1/2" x 3"     | 25/300   |
| 50535          | 1/2" x 3-1/2" | 25/300   |
| 50540          | 1/2" x 4"     | 25/200   |
| 50545          | 1/2" x 4-1/2" | 25/200   |
| 50550          | 1/2" x 5"     | 25/200   |
| 50555          | 1/2" x 5-1/2" | 25/200   |
| 50560          | 1/2" x 6"     | 25/200   |
| 50570          | 1/2" x 7"     | 25/100   |

## Pipe Nipples (cont.)

| GALV. PART NO. | SIZE            | CTN/MSTR |
|----------------|-----------------|----------|
| 50580          | 1/2" x 8"       | 25/100   |
| 50590          | 1/2" x 9"       | 25/100   |
| 50700          | 3/4" x Close    | 25/400   |
| 50710          | 3/4" x 10"      | 25/50    |
| 50711          | 3/4" x 11"      | 25/50    |
| 50712          | 3/4" x 12"      | 25/50    |
| 50715          | 3/4" x 1-1/2"   | 25/400   |
| 50720          | 3/4" x 2"       | 25/300   |
| 50725          | 3/4" x 2-1/2"   | 25/300   |
| 50730          | 3/4" x 3"       | 25/200   |
| 50735          | 3/4" x 3-1/2"   | 25/200   |
| 50740          | 3/4" x 4"       | 25/150   |
| 50745          | 3/4" x 4-1/2"   | 25/150   |
| 50750          | 3/4" x 5"       | 25/100   |
| 50755          | 3/4" x 5-1/2"   | 25/100   |
| 50760          | 3/4" x 6"       | 25/100   |
| 50770          | 3/4" x 7"       | 25/75    |
| 50775          | 3/4" x 7-1/2"   | 25/75    |
| 50780          | 3/4" x 8"       | 25/75    |
| 50790          | 3/4" x 9"       | 25/50    |
| 51000          | 1" x Close      | 25/200   |
| 51010          | 1" x 10"        | 25/50    |
| 51011          | 1" x 11"        | 25/50    |
| 51012          | 1" x 12"        | 25/50    |
| 51014          | 1" x 14"        | 5/25     |
| 51020          | 1" x 2"         | 25/200   |
| 51025          | 1" x 2-1/2"     | 25/150   |
| 51030          | 1" x 3"         | 25/150   |
| 51035          | 1" x 3-1/2"     | 25/100   |
| 51040          | 1" x 4"         | 25/100   |
| 51045          | 1" x 4-1/2"     | 25/100   |
| 51050          | 1" x 5"         | 25/75    |
| 51055          | 1" x 5-1/2"     | 25/75    |
| 51060          | 1" x 6"         | 25/50    |
| 51070          | 1" x 7"         | 25/50    |
| 51080          | 1" x 8"         | 25/50    |
| 51090          | 1" x 9"         | 25/50    |
| 51200          | 1-1/4" x Close  | 25/100   |
| 51210          | 1-1/4" x 10"    | 20/40    |
| 51211          | 1-1/4" x 11"    | 20/40    |
| 51212          | 1-1/4" x 12"    | 10/30    |
| 51220          | 1-1/4" x 2"     | 25/100   |
| 51225          | 1-1/4" x 2-1/2" | 25/100   |
| 51230          | 1-1/4" x 3"     | 25/100   |
| 51235          | 1-1/4" x 3-1/2" | 25/50    |
| 51240          | 1-1/4" x 4"     | 25/50    |
| 51245          | 1-1/4" x 4-1/2" | 25/50    |
| 51250          | 1-1/4" x 5"     | 25/50    |
| 51255          | 1-1/4" x 5-1/2" | 25/50    |
| 51260          | 1-1/4" x 6"     | 25/50    |
| 51270          | 1-1/4" x 7"     | 25/50    |
| 51280          | 1-1/4" x 8"     | 25/50    |
| 51290          | 1-1/4" x 9"     | 25/50    |
| 51500          | 1-1/2" x Close  | 25/100   |
| 51510          | 1-1/2" x 10"    | 15/30    |
| 51511          | 1-1/2" x 11"    | 15/30    |
| 51512          | 1-1/2" x 12"    | 15/30    |
| 51520          | 1-1/2" x 2"     | 25/100   |
| 51525          | 1-1/2" x 2-1/2" | 25/50    |
| 51530          | 1-1/2" x 3"     | 25/50    |
| 51535          | 1-1/2" x 3-1/2" | 25/50    |
| 51540          | 1-1/2" x 4"     | 25/50    |
| 51545          | 1-1/2" x 4-1/2" | 25/50    |
| 51550          | 1-1/2" x 5"     | 25/50    |
| 51555          | 1-1/2" x 5-1/2" | 25/50    |
| 51560          | 1-1/2" x 6"     | 25/50    |
| 51570          | 1-1/2" x 7"     | 20/40    |
| 51580          | 1-1/2" x 8"     | 20/40    |
| 51590          | 1-1/2" x 9"     | 10/20    |
| 52000          | 2" x Close      | 25/50    |
| 52010          | 2" x 10"        | 15/30    |
| 52011          | 2" x 11"        | 15/30    |

## Pipe Nipples (cont.)

| GALV. PART NO. | SIZE            | CTN/MSTR |
|----------------|-----------------|----------|
| 52012          | 2" x 12"        | 15/30    |
| 52025          | 2" x 2-1/2"     | 25/50    |
| 52030          | 2" x 3"         | 25/50    |
| 52035          | 2" x 3-1/2"     | 25/50    |
| 52040          | 2" x 4"         | 25/50    |
| 52045          | 2" x 4-1/2"     | 25/50    |
| 52050          | 2" x 5"         | 25/50    |
| 52055          | 2" x 5-1/2"     | 25/50    |
| 52060          | 2" x 6"         | 25/50    |
| 52070          | 2" x 7"         | 20/20    |
| 52080          | 2" x 8"         | 20/20    |
| 52090          | 2" x 9"         | 20/20    |
| 52500          | 2-1/2" x Close  | 20/40    |
| 52510          | 2-1/2" x 10"    | 10/10    |
| 52511          | 2-1/2" x 11"    | 10/10    |
| 52512          | 2-1/2" x 12"    | 10/10    |
| 52530          | 2-1/2" x 3"     | 20/40    |
| 52535          | 2-1/2" x 3-1/2" | 30/30    |
| 52540          | 2-1/2" x 4"     | 30/30    |
| 52545          | 2-1/2" x 4-1/2" | 30/30    |
| 52550          | 2-1/2" x 5"     | 20/20    |
| 52555          | 2-1/2" x 5-1/2" | 20/20    |
| 52560          | 2-1/2" x 6"     | 20/20    |
| 52570          | 2-1/2" x 7"     | 20/20    |
| 52580          | 2-1/2" x 8"     | 10/10    |
| 52590          | 2-1/2" x 9"     | 10/10    |
| 53000          | 3" x Close      | 30/30    |
| 53010          | 3" x 10"        | 5/5      |
| 53011          | 3" x 11"        | 5/5      |
| 53012          | 3" x 12"        | 5/5      |
| 53030          | 3" x 3"         | 20/20    |
| 53035          | 3" x 3-1/2"     | 15/15    |
| 53040          | 3" x 4"         | 15/15    |
| 53045          | 3" x 4-1/2"     | 15/15    |
| 53050          | 3" x 5"         | 15/15    |
| 53055          | 3" x 5-1/2"     | 15/15    |
| 53060          | 3" x 6"         | 10/10    |
| 53070          | 3" x 7"         | 7/7      |
| 53080          | 3" x 8"         | 7/7      |
| 53550          | 3-1/2" x 5"     | 8/8      |
| 54000          | 4" x Close      | 20/20    |
| 54010          | 4" x 10"        | 4/4      |
| 54011          | 4" x 11"        | 4/4      |
| 54012          | 4" x 12"        | 4/4      |
| 54035          | 4" x 3-1/2"     | 10/10    |
| 54040          | 4" x 4"         | 10/10    |
| 54045          | 4" x 4-1/2"     | 8/8      |
| 54050          | 4" x 5"         | 8/8      |
| 54055          | 4" x 5-1/2"     | 8/8      |
| 54060          | 4" x 6"         | 8/8      |
| 54070          | 4" x 7"         | 4/4      |
| 54080          | 4" x 8"         | 4/4      |
| 54090          | 4" x 9"         | 4/4      |
| 56000          | 6" x Close      | 1/4      |
| 56010          | 6" x 10"        | 1/3      |
| 56011          | 6" x 11"        | 1/3      |
| 56012          | 6" x 12"        | 3/3      |
| 56045          | 6" x 4-1/2"     | 1/2      |
| 56050          | 6" x 5"         | 1/5      |
| 56055          | 6" x 5-1/2"     | 1/2      |
| 56060          | 6" x 6"         | 1/2      |
| 56070          | 6" x 7"         | 1/4      |
| 56080          | 6" x 8"         | 1/4      |
| 56090          | 6" x 9"         | 1/4      |

**Installation Kit**

Kit includes:

| Size   | Close | 1-1/2" | 2" | 2-1/2" | 3" | 3-1/2" | 4" | 4-1/2" | 5" | 5-1/2" | 6" |
|--------|-------|--------|----|--------|----|--------|----|--------|----|--------|----|
| 1/2"   | 1     | 1      | 1  | 1      | 1  | 1      | 1  | 1      | 1  | 1      | 1  |
| 3/4"   | 1     | 1      | 1  | 1      | 1  | 1      | 1  | 1      | 1  | 1      | 1  |
| 1"     | 1     |        | 1  | 1      | 1  | 1      | 1  | 1      | 1  | 1      | 1  |
| 1-1/4" | 1     |        | 1  | 1      | 1  | 1      | 1  | 1      | 1  | 1      | 1  |
| 1-1/2" | 1     |        | 1  | 1      | 1  | 1      | 1  | 1      | 1  | 1      | 1  |
| 2"     | 1     |        |    | 1      | 1  | 1      | 1  | 1      | 1  | 1      | 1  |

| GALV. PART NO. | SIZE   | CTN/MSTR |
|----------------|--------|----------|
| GI05           | 1/2"   | 1/1      |
| GI07           | 3/4"   | 1/1      |
| GI10           | 1"     | 1/1      |
| GI12           | 1-1/4" | 1/1      |
| GI15           | 1-1/2" | 1/1      |

**C-Assortment**

Assortment includes:

| Size   | Close | 1-1/4" | 1-1/2" | 2" | 2-1/2" | 3" | 3-1/2" | 4" | 4-1/2" | 5" | 5-1/2" | 6" |
|--------|-------|--------|--------|----|--------|----|--------|----|--------|----|--------|----|
| 1/2"   | 4     |        | 3      | 3  | 3      | 2  | 2      | 2  | 1      | 2  | 1      | 2  |
| 3/4"   | 6     |        |        | 4  | 3      | 2  | 2      | 2  | 1      | 2  | 1      | 2  |
| 1"     | 5     |        |        | 5  | 3      | 2  | 2      | 2  | 1      | 2  | 1      | 2  |
| 1-1/4" | 6     |        |        | 4  | 3      | 2  | 2      | 2  | 1      | 2  | 1      | 2  |
| 1-1/2" | 5     | 1      |        | 5  | 3      | 2  | 2      | 2  | 1      | 2  | 1      | 2  |

| GALV. PART NO. | SIZE | CTN/MSTR |
|----------------|------|----------|
| CG05           | 1/2" | 1/1      |
| CG07           | 3/4" | 1/1      |
| CG10           | 1"   | 1/1      |

**A-Assortment**

Assortment includes:

| Size | Close | 1-1/2" | 2" | 2-1/2" | 3" | 3-1/2" | 4" | 4-1/2" | 5" | 5-1/2" | 6" |
|------|-------|--------|----|--------|----|--------|----|--------|----|--------|----|
| 1/2" | 20    | 10     | 15 | 10     | 10 | 5      | 10 | 5      | 5  | 5      | 5  |
| 3/4" | 25    |        | 20 | 10     | 10 | 5      | 10 | 5      | 5  | 5      | 5  |
| 1"   | 15    |        | 12 | 5      | 12 | 3      | 12 | 3      | 5  | 3      | 5  |

| GALV. PART NO. | SIZE | CTN/MSTR |
|----------------|------|----------|
| AG05           | 1/2" | 1/1      |
| AG07           | 3/4" | 1/1      |
| AG10           | 1"   | 1/1      |

**6-Pack Assortment**

Assortment includes:

| Size | Close | 1-1/2" | 2" | 2-1/2" | 3" | 3-1/2" | 4" | 4-1/2" | 5" | 5-1/2" | 6" |
|------|-------|--------|----|--------|----|--------|----|--------|----|--------|----|
| 1/2" | 6     | 6      | 6  | 6      | 6  | 6      | 6  | 6      | 6  | 6      | 6  |
| 3/4" | 6     | 6      | 6  | 6      | 6  | 6      | 6  | 6      | 6  | 6      | 6  |
| 1"   | 6     |        | 6  | 6      | 6  | 6      | 6  | 6      | 6  | 6      | 6  |

| GALV. PART NO. | SIZE | CTN/MSTR |
|----------------|------|----------|
| 605G           | 1/2" | 1/1      |
| 607G           | 3/4" | 1/1      |
| 610G           | 1"   | 1/1      |

**Readycut Pipe**



| GALV. PART NO. | SIZE       | CTN/MSTR |
|----------------|------------|----------|
| 301G0218       | 1/4"x18"   | 5/10     |
| 301G0224       | 1/4"x24"   | 5/10     |
| 301G0230       | 1/4"x30"   | 5/10     |
| 301G0236       | 1/4"x36"   | 5/10     |
| 301G0248       | 1/4"x48"   | 5/10     |
| 301G0260       | 1/4"x60"   | 5/10     |
| 301G0318       | 3/8"x18"   | 5/10     |
| 301G0324       | 3/8"x24"   | 5/10     |
| 301G0336       | 3/8"x36"   | 5/10     |
| 301G0348       | 3/8"x48"   | 5/10     |
| 301G0360       | 3/8"x60"   | 5/10     |
| 301G0518       | 1/2"x18"   | 5/10     |
| 301G0524       | 1/2"x24"   | 5/10     |
| 301G0530       | 1/2"x30"   | 5/10     |
| 301G0536       | 1/2"x36"   | 5/10     |
| 301G0542       | 1/2"x42"   | 5/10     |
| 301G0548       | 1/2"x48"   | 5/10     |
| 301G0560       | 1/2"x60"   | 5/10     |
| 301G0572       | 1/2"x72"   | 5/10     |
| 301G0718       | 3/4"x18"   | 5/10     |
| 301G0724       | 3/4"x24"   | 5/10     |
| 301G0730       | 3/4"x30"   | 5/10     |
| 301G0736       | 3/4"x36"   | 5/10     |
| 301G0742       | 3/4"x42"   | 5/10     |
| 301G0748       | 3/4"x48"   | 5/10     |
| 301G0754       | 3/4"x54"   | 5/10     |
| 301G0760       | 3/4"x60"   | 5/10     |
| 301G0772       | 3/4"x72"   | 5/10     |
| 301G1018       | 1"x18"     | 5/10     |
| 301G1024       | 1"x24"     | 5/10     |
| 301G1030       | 1"x30"     | 5/10     |
| 301G1036       | 1"x36"     | 5/10     |
| 301G1042       | 1"x42"     | 5/10     |
| 301G1048       | 1"x48"     | 5/10     |
| 301G1060       | 1"x60"     | 3/6      |
| 301G1072       | 1"x72"     | 3/6      |
| 301G1218       | 1-1/4"x18" | 3/6      |
| 301G1220       | 1-1/4"x20" | 3/6      |
| 301G1224       | 1-1/4"x24" | 3/6      |
| 301G1230       | 1-1/4"x30" | 3/6      |
| 301G1236       | 1-1/4"x36" | 3/6      |
| 301G1242       | 1-1/4"x42" | 3/6      |
| 301G1248       | 1-1/4"x48" | 3/6      |
| 301G1260       | 1-1/4"x60" | 3/6      |
| 301G1518       | 1-1/2"x18" | 3/6      |
| 301G1524       | 1-1/2"x24" | 3/6      |
| 301G1530       | 1-1/2"x30" | 3/6      |
| 301G1536       | 1-1/2"x36" | 3/6      |



## Readycut Pipe (cont.)

| GALV. PART NO. | SIZE       | CTN/MSTR |
|----------------|------------|----------|
| 301G1548       | 1-1/2"x48" | 3/6      |
| 301G1560       | 1-1/2"x60" | 3/6      |
| 301G2018       | 2"x18"     | 3/6      |
| 301G2024       | 2"x24"     | 3/6      |
| 301G2030       | 2"x30"     | 3/6      |
| 301G2036       | 2"x36"     | 3/6      |
| 301G2048       | 2"x48"     | 3/6      |
| 301G2060       | 2"x60"     | 3/6      |
| 52524          | 2-1/2"x24" | 3/6      |
| 301G3018       | 3"x18"     | 2/4      |
| 301G3024       | 3"x24"     | 2/4      |
| 301G4018       | 4"x18"     | 2/2      |
| 54024          | 4"x24"     | 2/2      |
| 301G4048       | 4"x48"     | 2/2      |

## Standard Merchant Coupling



| GALV. PART NO. | SIZE   | CTN/MSTR |
|----------------|--------|----------|
| M101           | 1/8"   | 100/600  |
| M102           | 1/4"   | 100/500  |
| M103           | 3/8"   | 100/300  |
| M105           | 1/2"   | 100/250  |
| M107           | 3/4"   | 50/150   |
| M110           | 1"     | 30/100   |
| M112           | 1-1/4" | 25/70    |
| M115           | 1-1/2" | 25/60    |
| M120           | 2"     | 20/40    |
| M125           | 2-1/2" | 10/20    |
| M130           | 3"     | 10/10    |
| M140           | 4"     | 10/5     |

## Copper Stub Out Elbow



- Connects to ASTM F1960 (Cold Expansion Style) PEX
- Closed end for pressure testing
- cUPC approved for use in USA and Canada
- ANSI/NSF 61 & ANSI/NSF 372 approved for drinking water



| PART NO. | DESCRIPTION                               | CTN/MSTR |
|----------|---|----------|
| S71000   | 1/2" Cold Expansion PEX (F1960), 13" x 8" | 1/50     |
| S71001   | 1/2" Cold Expansion PEX (F1960), 4" x 8"  | 1/50     |
| S71002   | 3/4" Cold Expansion PEX (F1960), 6" x 8"  | 1/25     |
| S71003   | 1" Cold Expansion PEX (F1960), 6" x 12"   | 1/25     |



- Connects to ASTM 1870 (Crimp Style) PEX
- Closed end for pressure testing
- cUPC approved for use in USA and Canada
- ANSI/NSF 61 & ANSI/NSF 372 approved for drinking water



| PART NO. | DESCRIPTION                          | CTN/MSTR |
|----------|--------------------------------------|----------|
| S72000   | 1/2" Crimp PEX (F1807), 3-1/2" x 6"  | 1/50     |
| S72001   | 1/2" Crimp PEX (F1807), 3-1/4" x 8"  | 1/50     |
| S72002   | 1/2" Crimp PEX (F1807), 3-1/2" x 12" | 1/50     |
| S72003   | 1/2" Crimp PEX (F1807), 13" x 8"     | 1/25     |
| S72004   | 3/4" Crimp PEX (F1807), 4-1/2" x 8"  | 1/50     |
| S72005   | 3/4" Crimp PEX (F1807), 4-1/2" x 12" | 1/50     |
| S72006   | 3/4" Crimp PEX (F1807), 13" x 6"     | 1/25     |
| S72007   | 1" Crimp PEX (F1807), 6" x 8"        | 1/25     |
| S72008   | 1" Crimp PEX (F1807), 6" x 12"       | 1/25     |



- Connects to CPVC tubing (Solvent Weld)
- Closed end for pressure testing
- cUPC approved for use in USA and Canada
- ANSI/NSF 61 & ANSI/NSF 372 approved for drinking water



| PART NO. | DESCRIPTION             | CTN/MSTR |
|----------|-------------------------|----------|
| S73000   | 1/2" CPVC, 3-1/2" x 12" | 1/50     |
| S73001   | 1/2" CPVC, 8" x 7"      | 1/50     |
| S73002   | 3/4" CPVC, 6" x 8"      | 1/50     |
| S73003   | 3/4" CPVC, 6" x 12"     | 1/25     |
| S73004   | 1" CPVC, 11" x 10"      | 1/25     |

## Copper Stub Out Elbow with Mounting Flange



- Connects to ASTM F1960 (Cold Expansion Style) PEX
- Closed end for pressure testing
- Flange for nailing to a stud
- cUPC approved for use in USA and Canada
- ANSI/NSF 61 & ANSI/NSF 372 approved for drinking water



| PART NO. | DESCRIPTION                                     | CTN/MSTR |
|----------|---|----------|
| S71004   | 1/2" Cold Expansion PEX (F1960) Double, 7" x 8" | 1/25     |
| S71005   | 1/2" Cold Expansion PEX (F1960), 4" x 8"        | 1/25     |
| S71006   | 3/4" Cold Expansion PEX (F1960), 6" x 8"        | 1/25     |
| S71007   | 1" Cold Expansion PEX (F1960), 6" x 12"         | 1/25     |



- Connects to ASTM 1870 (Crimp Style) PEX
- Closed end for pressure testing
- Flange for nailing to a stud
- cUPC approved for use in USA and Canada
- ANSI/NSF 61 & ANSI/NSF 372 approved for drinking water



| PART NO. | DESCRIPTION                         | CTN/MSTR |
|----------|-------------------------------------|----------|
| S72009   | 1/2" Crimp PEX (F1807), 4" x 12"    | 1/50     |
| S72010   | 1/2" Crimp PEX (F1807), 3-1/2" x 6" | 1/50     |
| S72011   | 1/2" Crimp PEX (F1807), 3-1/2" x 8" | 1/50     |
| S72012   | 3/4" Crimp PEX (F1807), 4-1/2" x 8" | 1/50     |
| S72013   | 1" Crimp PEX (F1807), 6" x 8"       | 1/25     |



- Connects to CPVC tubing (Solvent Weld)
- Closed end for pressure testing
- Flange for nailing to a stud
- cUPC approved for use in USA and Canada
- ANSI/NSF 61 & ANSI/NSF 372 approved for drinking water



| PART NO. | DESCRIPTION                   | CTN/MSTR |
|----------|-------------------------------|----------|
| S73005   | 1/2" CPVC Socket, 3-1/2" x 8" | 1/25     |
| S73006   | 1" CPVC Socket, 11" x 10"     | 1/25     |

## Copper Stub Out Tub/Shower Valve Connector



- Connects to ASTM F1960 (Cold Expansion Style) PEX
- cUPC approved for use in USA and Canada
- ANSI/NSF 61 & ANSI/NSF 372 approved for drinking water



| PART NO. | DESCRIPTION   | CTN/MSTR |
|----------|---|----------|
| S71011   | 1/2" Cold Expansion PEX (F1960) x 1/2" Male Sweat Connection, 6"                | 1/50     |
| S71012   | 1/2" Cold Expansion PEX (F1960) x 1/2" Male Swivel Pipe Thread Connection, 7"   | 1/50     |
| S71013   | 1/2" Cold Expansion PEX (F1960) x 1/2" Female Swivel Pipe Thread Connection, 6" | 1/50     |



- Connects to ASTM 1870 (Crimp Style) PEX
- cUPC approved for use in USA and Canada
- ANSI/NSF 61 & ANSI/NSF 372 approved for drinking water



| PART NO. | DESCRIPTION   | CTN/MSTR |
|----------|---|----------|
| S72020   | 1/2" Crimp PEX (F1807) x 1/2" Male Sweat Connection, 4" | 1/50     |
| S72021   | 1/2" Crimp PEX (F1807) x 1/2" Male Sweat Connection, 6" | 1/50     |
| S72022   | 1/2" Crimp PEX (F1807) x 1/2" Male Sweat Connection, 8" | 1/50     |



- Connects to CPVC tubing (Solvent Weld)
- Closed end for pressure testing
- cUPC approved for use in USA and Canada
- ANSI/NSF 61 & ANSI/NSF 372 approved for drinking water



| PART NO. | DESCRIPTION   | CTN/MSTR |
|----------|---|----------|
| S73007   | 1/2" CPVC Socket x 1/2" Male Sweat Elbow, 6" x 2-1/4" | 1/50     |
| S73008   | 1/2" CPVC Socket x 1/2" Male Sweat Elbow, 8" x 2-1/4" | 1/50     |

## Copper Stub Out Straight



- Connects to ASTM F1960 (Cold Expansion Style) PEX
- Closed end for pressure testing
- cUPC approved for use in USA and Canada
- ANSI/NSF 61 & ANSI/NSF 372 approved for drinking water



| PART NO. | DESCRIPTION  | CTN/MSTR |
|----------|--|----------|
| S71008   | 1/2" Cold Expansion PEX (F1960) Closed End, 8" long  | 1/50     |
| S71009   | 1/2" Cold Expansion PEX (F1960) Closed End, 15" long | 1/50     |



- Connects to ASTM 1870 (Crimp Style) PEX
- cUPC approved for use in USA and Canada
- ANSI/NSF 61 & ANSI/NSF 372 approved for drinking water



| PART NO. | DESCRIPTION                                  | CTN/MSTR |
|----------|--|----------|
| S72014   | 1/2" Crimp PEX (F1807), Closed End, 8" Long  | 1/50     |
| S72015   | 1/2" Crimp PEX (F1807), Closed End, 12" Long | 1/50     |
| S72016   | 3/4" Crimp PEX (F1807), Closed End, 12" Long | 1/50     |
| S72018   | 1/2" Crimp PEX (F1807), Open End, 8" Long    | 1/50     |
| S72019   | 1/2" Crimp PEX (F1807), Open End, 12" Long   | 1/50     |

## Copper Stub Out Straight with Mounting Flange



- Connects to ASTM F1960 (Cold Expansion Style) PEX
- Closed end for pressure testing
- Flange for nailing to a stud
- cUPC approved for use in USA and Canada
- ANSI/NSF 61 & ANSI/NSF 372 approved for drinking water



| PART NO. | DESCRIPTION                                  | CTN/MSTR |
|----------|--|----------|
| S71010   | 1/2" Crimp PEX (F1807), Closed End, 12" Long | 1/50     |



- Connects to ASTM 1870 (Crimp Style) PEX
- Closed end for pressure testing
- Flange for nailing to a stud
- cUPC approved for use in USA and Canada
- ANSI/NSF 61 & ANSI/NSF 372 approved for drinking water



| PART NO. | DESCRIPTION                                  | CTN/MSTR |
|----------|--|----------|
| S72017   | 1/2" Crimp PEX (F1807), Closed End, 12" Long | 1/50     |

## Compression Cap

Style 61C



| PART NO. | TUBE SIZE | CTN/MSTR |
|----------|-----------|----------|
| C74001LF | 1/4"      | 500/1000 |
| C74002LF | 3/8"      | 500/1000 |
| C74147LF | 1/2"      | 1/1      |
| C74155LF | 5/8"      | 1/1      |

## Compression Sleeve

Style 60



• CARTON QUANTITIES ONLY

| PART NO. | TUBE SIZE | CTN/MSTR |
|----------|-----------|----------|
| C74003   | 1/8"      | 10/2000  |
| C74004   | 3/16"     | 10/2000  |
| C74005   | 1/4"      | 10/2000  |
| C74006   | 5/16"     | 10/2000  |
| C74007   | 3/8"      | 5/2000   |
| C74008   | 1/2"      | 5/2000   |
| C74009   | 5/8"      | 5/2000   |
| C74010   | 3/4"      | 5/1000   |
| C74011   | 7/8"      | 3/1005   |

## Compression Nut



| PART NO. | TUBE SIZE | CTN/MSTR |
|----------|-----------|----------|
| C74012   | 1/8"      | 10/1000  |
| C74013   | 3/16"     | 10/1000  |
| C74014   | 1/4"      | 10/2000  |
| C74015   | 5/16"     | 10/1000  |
| C74016   | 3/8"      | 5/2000   |
| C74152   | 7/16"     | 1/25     |
| C74017   | 1/2"      | 5/1000   |
| C74018   | 5/8"      | 5/1000   |
| C74019   | 3/4"      | 5/400    |
| C74020   | 7/8"      | 3/300    |

## Delrin Compression Sleeve

Style 60P



• CARTON QUANTITIES ONLY

| PART NO. | TUBE SIZE | CTN/MSTR |
|----------|-----------|----------|
| C74096   | 1/4"      | 100/100  |
| C74097   | 3/8"      | 100/100  |
| C74098   | 1/2"      | 100/100  |
| C74099   | 5/8"      | 50/50    |

## Compression Insert

Style 63P



- Lead Free
- CARTON QUANTITIES ONLY

| PART NO. | TUBE SIZE | CTN/MSTR |
|----------|-----------|----------|
| C74100LF | 1/4"      | 100/2000 |
| C74101LF | 3/8"      | 100/2000 |
| C74102LF | 1/2"      | 10/2000  |
| C74103LF | 5/8"      | 10/2000  |

## Compression Union

Style 62



• Lead Free

| PART NO. | TUBE SIZE   | CTN/MSTR |
|----------|-------------|----------|
| C74021LF | 1/8"        | 10/300   |
| C74022LF | 3/16"       | 10/300   |
| C74023LF | 1/4"        | 10/500   |
| C74025LF | 3/8"        | 5/500    |
| C74026LF | 1/2"        | 100/400  |
| C74027LF | 5/8"        | 5/250    |
| C74029LF | 7/8"        | 3/102    |
| C74030LF | 3/8" x 1/4" | 10/300   |
| C74031LF | 1/2" x 3/8" | 5/300    |
| C74032LF | 5/8" x 3/8" | 5/300    |
| C74033LF | 5/8" x 1/2" | 5/300    |

## Compression Tee

Style 64



• Lead Free

| PART NO. | TUBE SIZE          | CTN/MSTR |
|----------|--------------------|----------|
| C74034LF | 1/4"               | 10/300   |
| C74036LF | 3/8"               | 5/300    |
| C74037LF | 3/8" x 3/8" x 1/4" | 10/300   |
| C74038LF | 1/2"               | 50/200   |
| C74039LF | 5/8"               | 5/200    |

## Compression x FIP Branch Tee

Style 78



• Lead Free

| PART NO. | TUBE x FIP  | CTN/MSTR |
|----------|-------------|----------|
| C74091LF | 3/8" x 1/8" | 1/1      |

## Compression x Sweat Adapter

Style 666



• Lead Free

| PART NO. | TUBE x OD                 | CTN/MSTR |
|----------|---------------------------|----------|
| C74093LF | 3/8" x 5/8"<br>(1/2" swt) | 5/200    |

## Compression x FIP Connector

Style 66

• Lead Free



| PART NO. | TUBE x FIP  | CTN/MSTR |
|----------|-------------|----------|
| C74045LF | 1/4" x 1/8" | 10/200   |
| C74046LF | 1/4" x 1/4" | 10/200   |
| C74113LF | 1/4" x 3/8" | 10/200   |
| C74114LF | 1/4" x 1/2" | 10/200   |
| C74048LF | 3/8" x 1/8" | 200/800  |
| C74049LF | 3/8" x 1/4" | 10/200   |
| C74050LF | 3/8" x 3/8" | 5/200    |
| C74051LF | 3/8" x 1/2" | 5/200    |
| C74052LF | 1/2" x 3/8" | 100/400  |
| C74053LF | 1/2" x 1/2" | 100/400  |
| C74054LF | 5/8" x 1/2" | 5/200    |
| C74118LF | 5/8" x 3/4" | 3/201    |
| C74055LF | 7/8" x 3/4" | 3/201    |

## Compression x MIP Connector

Style 68

• Lead Free



| PART NO. | TUBE x MIP  | CTN/MSTR |
|----------|-------------|----------|
| C74121LF | 1/8" x 1/8" | 10/200   |
| C74058LF | 1/4" x 1/8" | 10/200   |
| C74059LF | 1/4" x 1/4" | 250/1000 |
| C74060LF | 1/4" x 3/8" | 10/200   |
| C74123LF | 1/4" x 1/2" | 10/200   |
| C74063LF | 3/8" x 1/8" | 10/200   |
| C74064LF | 3/8" x 1/4" | 10/200   |
| C74065LF | 3/8" x 3/8" | 5/200    |
| C74066LF | 3/8" x 1/2" | 5/200    |
| C74067LF | 3/8" x 3/4" | 3/201    |
| C74068LF | 1/2" x 1/4" | 5/200    |
| C74069LF | 1/2" x 3/8" | 5/200    |
| C74070LF | 1/2" x 1/2" | 5/200    |
| C74146LF | 5/8" x 3/8" | 5/200    |
| C74071LF | 5/8" x 1/2" | 5/200    |
| C74072LF | 5/8" x 3/4" | 3/201    |
| C74149LF | 7/8" x 1/2" | 3/120    |
| C74073LF | 7/8" x 3/4" | 3/201    |

## Compression Elbow

Style 65

• Lead Free



| PART NO. | TUBE SIZE   | CTN/MSTR |
|----------|-------------|----------|
| C74040LF | 1/4"        | 10/300   |
| C74041LF | 3/8"        | 5/300    |
| C74042LF | 1/2"        | 5/200    |
| C74043LF | 5/8"        | 5/200    |
| C74044LF | 5/8" x 3/8" | 100/200  |
| C74112LF | 7/8"        | 50/100   |

## Compression x FIP Elbow

Style 70

• Lead Free



| PART NO. | TUBE x FIP  | CTN/MSTR |
|----------|-------------|----------|
| C74078LF | 3/8" x 1/2" | 5/200    |
| C74131LF | 1/2" x 3/8" | 5/200    |

## Compression x MIP Elbow

Style 69

• Lead Free



| PART NO. | TUBE x MIP  | CTN/MSTR |
|----------|-------------|----------|
| C74081LF | 1/4" x 1/8" | 10/200   |
| C74082LF | 1/4" x 1/4" | 10/200   |
| C74135LF | 1/4" x 3/8" | 10/200   |
| C74136LF | 1/4" x 1/2" | 10/200   |
| C74085LF | 3/8" x 1/4" | 10/200   |
| C74086LF | 3/8" x 3/8" | 5/200    |
| C74087LF | 3/8" x 1/2" | 5/200    |
| C74088LF | 1/2" x 3/8" | 5/200    |
| C74089LF | 1/2" x 1/2" | 125/250  |
| C74090LF | 5/8" x 1/2" | 100/200  |

## Pilot Line Breakaway Nut

• Lead Free



| PART NO. | DESCRIPTION | CTN/MSTR |
|----------|-------------|----------|
| C74158LF | 1/4" OD     | 10/200   |

## Red Brass Male Insert Adapter

• For flexible polyethylene plastic pipe  
• Lead free



| PART NO. | SIZE   | CTN/MSTR |
|----------|--------|----------|
| I13001LF | 1/2"   | 10/200   |
| I13002LF | 3/4"   | 10/200   |
| I13003LF | 1"     | 10/100   |
| I13004LF | 1 1/4" | 10/100   |
| I13005LF | 1 1/2" | 10/60    |
| I13006LF | 2"     | 5/40     |

## Red Brass Male Insert Reducer

• For flexible polyethylene plastic pipe  
• Lead free



| PART NO. | INSERT x MPT | CTN/MSTR |
|----------|--------------|----------|
| I13007LF | 1" x 3/4"    | 1/100    |

## Red Brass Female Insert Adapter

• For flexible polyethylene plastic pipe  
• Lead free



| PART NO. | SIZE   | CTN/MSTR |
|----------|--------|----------|
| I13010LF | 3/4"   | 10/100   |
| I13011LF | 1"     | 1/200    |
| I13012LF | 1-1/4" | 1/100    |
| I13013LF | 1-1/2" | 1/100    |

### Red Brass Insert x MIP 90° Elbow



- For flexible polyethylene plastic pipe
- Lead free

| PART NO. | INSERT | MIP  | CTN/MSTR |
|----------|--------|------|----------|
| I13031LF | 3/4"   | 3/4" | 1/100    |
| I13032LF | 1"     | 3/4" | 1/100    |
| I13033LF | 1"     | 1"   | 10/100   |

### Red Brass Insert x Sweat Adapter



- For flexible polyethylene plastic pipe
- Lead free

| PART NO. | INSERT | SWEAT | CTN/MSTR |
|----------|--------|-------|----------|
| I13036LF | 3/4"   | 3/4"  | 10/100   |
| I13037LF | 1"     | 1"    | 10/200   |

### Red Brass Insert Coupling



- For flexible polyethylene plastic pipe
- Lead free

| PART NO. | SIZE   | CTN/MSTR |
|----------|--------|----------|
| I13016LF | 3/4"   | 1/100    |
| I13017LF | 1"     | 1/100    |
| I13018LF | 1 1/4" | 1/100    |
| I13019LF | 1 1/2" | 1/100    |
| I13020LF | 2"     | 10/100   |

### Red Brass Insert Tee



- For flexible polyethylene plastic pipe
- Lead free

| PART NO. | SIZE   | CTN/MSTR |
|----------|--------|----------|
| I13021LF | 3/4"   | 1/100    |
| I13022LF | 1"     | 1/100    |
| I13023LF | 1 1/4" | 10/50    |

### Red Brass Insert Elbow



- For flexible polyethylene plastic pipe
- Lead free

| PART NO. | SIZE   | CTN/MSTR |
|----------|--------|----------|
| I13024LF | 3/4"   | 1/100    |
| I13025LF | 1"     | 1/100    |
| I13026LF | 1 1/4" | 1/50     |

### Red Brass Insert Male Rope Adapter



- For flexible polyethylene plastic pipe
- Lead free

| PART NO. | SIZE       | CTN/MSTR |
|----------|------------|----------|
| I13027LF | 1"         | 1/100    |
| I13029LF | 1"x 1 1/4" | 1/100    |

### Brass PEX to PB (Polybutylene) Adapter



- Lead free

| PART NO. | SIZE | CTN/MSTR |
|----------|------|----------|
| C76100LF | 1/2" | 25/500   |
| C76101LF | 3/4" | 25/300   |

### Red Brass Pipe Nipples



- Meets ASTM B687
- Lead free

| PART NO. | IPT           | CTN/MSTR |
|----------|---------------|----------|
| N20000   | 1/8" x close  | 200/800  |
| N20001   | 1/8" x 1-1/2" | 200/800  |
| N20002   | 1/8" x 2"     | 200/800  |
| N20003   | 1/8" x 2-1/2" | 200/800  |
| N20004   | 1/8" x 3"     | 200/800  |
| N20005   | 1/8" x 3-1/2" | 100/400  |
| N20006   | 1/8" x 4"     | 100/400  |
| N20007   | 1/8" x 4-1/2" | 100/400  |
| N20008   | 1/8" x 5"     | 100/400  |
| N20009   | 1/8" x 5-1/2" | 100/400  |
| N20010   | 1/8" x 6"     | 100/400  |
| N20012   | 1/8" x 7"     | 1/400    |
| N20014   | 1/8" x 8"     | 1/400    |
| N21000   | 1/4" x close  | 150/600  |
| N21001   | 1/4" x 1-1/2" | 100/800  |
| N21002   | 1/4" x 2"     | 100/800  |
| N21003   | 1/4" x 2-1/2" | 100/800  |
| N21004   | 1/4" x 3"     | 50/400   |
| N21005   | 1/4" x 3-1/2" | 50/400   |
| N21006   | 1/4" x 4"     | 50/200   |
| N21007   | 1/4" x 4-1/2" | 50/200   |
| N21008   | 1/4" x 5"     | 40/320   |
| N21009   | 1/4" x 5-1/2" | 40/320   |
| N21010   | 1/4" x 6"     | 40/320   |
| N21014   | 1/4" x 8"     | 1/150    |
| N21022   | 1/4" x 12"    | 1/100    |
| N22000   | 3/8" x close  | 100/400  |
| N22001   | 3/8" x 1-1/2" | 100/400  |
| N22002   | 3/8" x 2"     | 80/320   |
| N22003   | 3/8" x 2-1/2" | 80/320   |
| N22004   | 3/8" x 3"     | 50/200   |
| N22005   | 3/8" x 3-1/2" | 40/320   |
| N22006   | 3/8" x 4"     | 40/320   |
| N22007   | 3/8" x 4-1/2" | 35/280   |
| N22008   | 3/8" x 5"     | 30/120   |
| N22009   | 3/8" x 5-1/2" | 30/120   |
| N22010   | 3/8" x 6"     | 30/120   |
| N22014   | 3/8" x 8"     | 1/160    |
| N22018   | 3/8" x 10"    | 1/120    |
| N22022   | 3/8" x 12"    | 1/110    |
| N23000   | 1/2" x close  | 75/600   |
| N23001   | 1/2" x 1-1/2" | 60/480   |
| N23002   | 1/2" x 2"     | 50/200   |
| N23003   | 1/2" x 2-1/2" | 35/280   |
| N23004   | 1/2" x 3"     | 35/280   |
| N23005   | 1/2" x 3-1/2" | 25/100   |
| N23006   | 1/2" x 4"     | 25/100   |
| N23007   | 1/2" x 4-1/2" | 25/100   |
| N23008   | 1/2" x 5"     | 25/100   |

## Red Brass Pipe Nipples cont...

| PART NO. | IPT             | CTN/MSTR |
|----------|-----------------|----------|
| N23009   | 1/2" x 5-1/2"   | 25/100   |
| N23010   | 1/2" x 6"       | 25/100   |
| N23012   | 1/2" x 7"       | 1/100    |
| N23014   | 1/2" x 8"       | 1/100    |
| N23016   | 1/2" x 9"       | 1/100    |
| N23018   | 1/2" x 10"      | 1/100    |
| N23020   | 1/2" x 11"      | 1/100    |
| N23022   | 1/2" x 12"      | 1/100    |
| N24000   | 3/4" x close    | 40/320   |
| N24001   | 3/4" x 1-1/2"   | 30/240   |
| N24002   | 3/4" x 2"       | 30/240   |
| N24003   | 3/4" x 2-1/2"   | 25/200   |
| N24004   | 3/4" x 3"       | 25/100   |
| N24005   | 3/4" x 3-1/2"   | 35/140   |
| N24006   | 3/4" x 4"       | 35/140   |
| N24007   | 3/4" x 4-1/2"   | 30/120   |
| N24008   | 3/4" x 5"       | 30/120   |
| N24009   | 3/4" x 5-1/2"   | 25/100   |
| N24010   | 3/4" x 6"       | 25/100   |
| N24012   | 3/4" x 7"       | 1/65     |
| N24014   | 3/4" x 8"       | 1/65     |
| N24016   | 3/4" x 9"       | 1/45     |
| N24018   | 3/4" x 10"      | 1/45     |
| N24022   | 3/4" x 12"      | 1/45     |
| N25000   | 1" x close      | 25/200   |
| N25002   | 1" x 2"         | 25/200   |
| N25003   | 1" x 2-1/2"     | 40/160   |
| N25004   | 1" x 3"         | 40/160   |
| N25005   | 1" x 3-1/2"     | 25/100   |
| N25006   | 1" x 4"         | 25/100   |
| N25007   | 1" x 4-1/2"     | 25/100   |
| N25008   | 1" x 5"         | 20/80    |
| N25009   | 1" x 5-1/2"     | 10/40    |
| N25010   | 1" x 6"         | 10/40    |
| N25012   | 1" x 7"         | 1/40     |
| N25014   | 1" x 8"         | 1/40     |
| N25016   | 1" x 9"         | 1/30     |
| N25018   | 1" x 10"        | 1/30     |
| N25022   | 1" x 12"        | 1/30     |
| N27000   | 1-1/4" x close  | 25/100   |
| N27002   | 1-1/4" x 2"     | 25/100   |
| N27003   | 1-1/4" x 2-1/2" | 10/80    |
| N27004   | 1-1/4" x 3"     | 10/80    |
| N27005   | 1-1/4" x 3-1/2" | 1/40     |
| N27006   | 1-1/4" x 4"     | 10/40    |
| N27007   | 1-1/4" x 4-1/2" | 10/40    |
| N27008   | 1-1/4" x 5"     | 10/40    |
| N27009   | 1-1/4" x 5-1/2" | 10/40    |
| N27010   | 1-1/4" x 6"     | 10/40    |
| N27014   | 1-1/4" x 8"     | 1/25     |
| N27016   | 1-1/4" x 9"     | 1/20     |

## Red Brass Pipe Nipples cont...

| PART NO. | IPT             | CTN/MSTR |
|----------|-----------------|----------|
| N27018   | 1-1/4" x 10"    | 1/20     |
| N27022   | 1-1/4" x 12"    | 1/20     |
| N28000   | 1-1/2" x close  | 25/100   |
| N28002   | 1-1/2" x 2"     | 20/80    |
| N28003   | 1-1/2" x 2-1/2" | 15/60    |
| N28004   | 1-1/2" x 3"     | 15/60    |
| N28005   | 1-1/2" x 3-1/2" | 15/60    |
| N28006   | 1-1/2" x 4"     | 15/60    |
| N28007   | 1-1/2" x 4-1/2" | 15/60    |
| N28008   | 1-1/2" x 5"     | 10/40    |
| N28009   | 1-1/2" x 5-1/2" | 10/40    |
| N28010   | 1-1/2" x 6"     | 10/40    |
| N28014   | 1-1/2" x 8"     | 1/20     |
| N28016   | 1-1/2" x 9"     | 1/15     |
| N28018   | 1-1/2" x 10"    | 1/15     |
| N28022   | 1-1/2" x 12"    | 1/15     |
| N29000   | 2" x close      | 15/60    |
| N29003   | 2" x 2-1/2"     | 10/40    |
| N29004   | 2" x 3"         | 10/40    |
| N29005   | 2" x 3-1/2"     | 10/40    |
| N29006   | 2" x 4"         | 10/40    |
| N29007   | 2" x 4-1/2"     | 10/40    |
| N29008   | 2" x 5"         | 1/25     |
| N29009   | 2" x 5-1/2"     | 1/25     |
| N29010   | 2" x 6"         | 1/25     |
| N29012   | 2" x 7"         | 1/10     |
| N29014   | 2" x 8"         | 1/10     |
| N29016   | 2" x 9"         | 1/10     |
| N29018   | 2" x 10"        | 1/10     |
| N29020   | 2" x 11"        | 1/10     |
| N29022   | 2" x 12"        | 1/10     |
| N30000   | 2-1/2" x close  | 1/40     |
| N30004   | 2-1/2" x 3"     | 1/40     |
| N30005   | 2-1/2" x 3-1/2" | 1/20     |
| N30006   | 2-1/2" x 4"     | 1/20     |
| N30007   | 2-1/2" x 4-1/2" | 1/20     |
| N30008   | 2-1/2" x 5"     | 1/20     |
| N30010   | 2-1/2" x 6"     | 1/20     |
| N31000   | 3" x close      | 1/20     |
| N31004   | 3" x 3"         | 1/20     |
| N31005   | 3" x 3-1/2"     | 1/10     |
| N31006   | 3" x 4"         | 1/10     |
| N31008   | 3" x 5"         | 1/10     |
| N31010   | 3" x 6"         | 1/10     |

### Yellow Brass 90° Elbow



| PART NO. | IPT  | CTN/MSTR |
|----------|------|----------|
| P20002   | 1/8" | 1/1      |
| P20004   | 1/4" | 1/1      |
| P20006   | 3/8" | 1/1      |
| P20008   | 1/2" | 1/1      |

### Yellow Brass 90° Male Elbow



| PART NO. | IPT  | CTN/MSTR |
|----------|------|----------|
| P13986   | 1/2" | 1/1      |

### Yellow Brass 90° Street Elbow



| PART NO. | IPT  | CTN/MSTR |
|----------|------|----------|
| P16002   | 1/8" | 1/1      |
| P16004   | 1/4" | 1/1      |
| P16006   | 3/8" | 1/1      |
| P16008   | 1/2" | 1/1      |

### Yellow Brass 45° Elbow



| PART NO. | IPT  | CTN/MSTR |
|----------|------|----------|
| P10452   | 1/8" | 1/1      |
| P10454   | 1/4" | 1/1      |

### Yellow Brass 45° Street Elbow



| PART NO. | IPT  | CTN/MSTR |
|----------|------|----------|
| P12402   | 1/8" | 1/1      |
| P12404   | 1/4" | 1/1      |
| P12408   | 1/2" | 1/1      |

### Yellow Brass Tee



| PART NO. | IPT  | CTN/MSTR |
|----------|------|----------|
| P10012   | 1/8" | 1/1      |
| P10014   | 1/4" | 1/1      |
| P10016   | 3/8" | 1/1      |
| P10018   | 1/2" | 1/1      |

### Yellow Brass Bell Reducer



| PART NO. | IPT         | CTN/MSTR |
|----------|-------------|----------|
| P19062   | 3/8" x 1/8" | 1/1      |
| P19082   | 1/2" x 1/8" | 1/1      |
| P19084   | 1/2" x 1/4" | 1/1      |
| P19086   | 1/2" x 3/8" | 1/1      |
| P19128   | 3/4" x 1/2" | 1/1      |

### Yellow Brass Coupling



| PART NO. | IPT  | CTN/MSTR |
|----------|------|----------|
| P10032   | 1/8" | 1/1      |
| P10034   | 1/4" | 1/1      |
| P10036   | 3/8" | 1/1      |
| P10038   | 1/2" | 1/1      |
| P10312   | 3/4" | 1/1      |

### Yellow Brass Cap



| PART NO. | IPT  | CTN/MSTR |
|----------|------|----------|
| P10082   | 1/8" | 1/1      |
| P10084   | 1/4" | 1/1      |
| P10086   | 3/8" | 1/1      |
| P10088   | 1/2" | 1/1      |
| P10812   | 3/4" | 1/1      |

### Yellow Brass Square Head Plug



| PART NO. | IPT  | CTN/MSTR |
|----------|------|----------|
| P10092   | 1/8" | 1/1      |
| P10094   | 1/4" | 1/1      |
| P10096   | 3/8" | 1/1      |
| P10098   | 1/2" | 1/1      |
| P10912   | 3/4" | 1/1      |

### Yellow Brass HEX Head Plug



| PART NO. | IPT  | CTN/MSTR |
|----------|------|----------|
| P12102   | 1/8" | 1/1      |
| P12104   | 1/4" | 1/1      |
| P12106   | 3/8" | 1/1      |
| P12108   | 1/2" | 1/1      |
| P12112   | 3/4" | 1/1      |

## Yellow Brass Countersunk Plug



| PART NO. | IPT  | CTN/MSTR |
|----------|------|----------|
| P20092   | 1/8" | 1/1      |
| P20094   | 1/4" | 1/1      |
| P20096   | 3/8" | 1/1      |
| P20098   | 1/2" | 1/1      |

## Yellow Brass Lock Nut



| PART NO. | IPT  | CTN/MSTR |
|----------|------|----------|
| P11102   | 1/8" | 1/1      |
| P11104   | 1/4" | 1/1      |
| P11106   | 3/8" | 1/1      |
| P11108   | 1/2" | 1/1      |

## Yellow Brass HEX Bushing



| PART NO. | IPT         | CTN/MSTR |
|----------|-------------|----------|
| P11042   | 1/4" x 1/8" | 1/1      |
| P11062   | 3/8" x 1/8" | 1/1      |
| P11064   | 3/8" x 1/4" | 1/1      |
| P11082   | 1/2" x 1/8" | 1/1      |
| P11084   | 1/2" x 1/4" | 1/1      |
| P11086   | 1/2" x 3/8" | 1/1      |
| P11122   | 3/4" x 1/8" | 1/1      |
| P11124   | 3/4" x 1/4" | 1/1      |
| P11126   | 3/4" x 3/8" | 1/1      |
| P11128   | 3/4" x 1/2" | 1/1      |

## Yellow Brass Face Bushing



| PART NO. | IPT         | CTN/MSTR |
|----------|-------------|----------|
| P11986   | 1/2" x 3/8" | 1/1      |
| P11928   | 3/4" x 1/2" | 1/1      |

## Yellow Brass Close Nipple



| PART NO. | IPT  | CTN/MSTR |
|----------|------|----------|
| P11202   | 1/8" | 1/1      |
| P11204   | 1/4" | 1/1      |
| P11206   | 3/8" | 1/1      |
| P11208   | 1/2" | 1/1      |

## Yellow Brass Long Nipple



| PART NO. | IPT           | CTN/MSTR |
|----------|---------------|----------|
| P13224   | 1/8" x 1-1/2" | 1/1      |
| P13232   | 1/8" x 2"     | 1/1      |
| P13424   | 1/4" x 1-1/2" | 1/1      |
| P13432   | 1/4" x 2"     | 1/1      |
| P13624   | 3/8" x 1-1/2" | 1/1      |
| P13632   | 3/8" x 2"     | 1/1      |

## Yellow Brass HEX Nipple



| PART NO. | IPT         | CTN/MSTR |
|----------|-------------|----------|
| P12202   | 1/8"        | 1/1      |
| P12204   | 1/4"        | 1/1      |
| P12206   | 3/8"        | 1/1      |
| P12208   | 1/2"        | 1/1      |
| P12212   | 3/4"        | 1/1      |
| P12342   | 1/4" x 1/8" | 1/1      |
| P12362   | 3/8" x 1/8" | 1/1      |
| P12364   | 3/8" x 1/4" | 1/1      |
| P12386   | 1/2" x 3/8" | 1/1      |
| P12328   | 3/4" x 1/2" | 1/1      |

## Male Hose To Male Pipe



| PART NO. | MHT x MPT                     | CTN/MSTR |
|----------|-------------------------------|----------|
| G20002   | 3/4" x 1/2"                   | 20/200   |
| G20003   | 3/4" x 3/4"<br>(1/2" FIP tap) | 20/200   |
| G20004   | 3/4" x 1/2"<br>(1/2" SWT)     | 50/200   |

## Male Hose To Male Pipe - Lead Free



| PART NO. | MHT x MPT                     | CTN/MSTR |
|----------|-------------------------------|----------|
| G20102   | 3/4" x 1/2"                   | 1/40     |
| G20103   | 3/4" x 3/4"<br>(1/2" FIP tap) | 50/200   |

## Male Hose To Male Hose



| PART NO. | MHT x MHT                     | CTN/MSTR |
|----------|-------------------------------|----------|
| G20008   | 3/4" x 3/4"<br>(1/2" FIP tap) | 20/200   |

## Male Hose To Male Hose - Lead Free



| PART NO. | MHT x MHT                     | CTN/MSTR |
|----------|-------------------------------|----------|
| G20108   | 3/4" x 3/4"<br>(1/2" FIP tap) | 1/40     |



### Male Hose To Female Pipe



| PART NO. | MHT x FPT   | CTN/MSTR |
|----------|-------------|----------|
| G20010   | 3/4" x 1/2" | 100/500  |
| G20011   | 3/4" x 3/4" | 20/200   |

### Male Hose To Female Pipe - Lead Free

• Lead Free



| PART NO. | MHT x FPT   | CTN/MSTR |
|----------|-------------|----------|
| G20110   | 3/4" x 1/2" | 1/40     |
| G20111   | 3/4" x 3/4" | 1/40     |

### Female Hose To Male Pipe



| PART NO. | FHT x MPT                  | CTN/MSTR |
|----------|----------------------------|----------|
| G20005   | 3/4" x 1/2" (1/2" SWT)     | 10/300   |
| G20015   | 3/4" x 1/2"                | 50/250   |
| G20016   | 3/4" x 3/4"                | 50/250   |
| G20017   | 3/4" x 3/4" (1/2" FIP tap) | 10/300   |

### Female Hose To Male Pipe - Lead Free

• Lead Free



| PART NO. | FHT x MPT   | CTN/MSTR |
|----------|-------------|----------|
| G20115   | 3/4" x 1/2" | 50/200   |
| G20116   | 3/4" x 3/4" | 1/40     |

### Female Hose To Female Pipe



| PART NO. | FHT x FPT   | CTN/MSTR |
|----------|-------------|----------|
| G20020   | 3/4" x 1/2" | 50/200   |
| G20021   | 3/4" x 3/4" | 50/200   |

### Female Hose To Female Pipe - Lead Free

• Lead Free



| PART NO. | FHT x FPT   | CTN/MSTR |
|----------|-------------|----------|
| G20120   | 3/4" x 1/2" | 1/40     |
| G20121   | 3/4" x 3/4" | 1/40     |

### Female Hose To Female Hose Swivel



| PART NO. | FHT x FHT   | CTN/MSTR |
|----------|-------------|----------|
| G20030   | 3/4" x 3/4" | 20/200   |

### Female Hose To Female Hose Swivel - Lead Free



• Lead Free

| PART NO. | FHT x FHT   | CTN/MSTR |
|----------|-------------|----------|
| G20130   | 3/4" x 3/4" | 1/40     |

### Female Hose To Female Pipe Swivel



| PART NO. | FHT x FPT   | CTN/MSTR |
|----------|-------------|----------|
| G20031   | 3/4" x 1/2" | 20/200   |
| G20032   | 3/4" x 3/4" | 125/250  |

### Female Hose To Female Pipe Swivel - Lead Free



• Lead Free

| PART NO. | FHT x FPT   | CTN/MSTR |
|----------|-------------|----------|
| G20131   | 3/4" x 1/2" | 1/40     |
| G20132   | 3/4" x 3/4" | 1/40     |

### Hose Barb To Female Hose Swivel



• Lead Free

| PART NO. | HB x FHT    | CTN/MSTR |
|----------|-------------|----------|
| G20035   | 3/8" x 3/4" | 10/400   |
| G20036   | 1/2" x 3/4" | 20/245   |
| G20037   | 5/8" x 3/4" | 10/400   |
| G20038   | 3/4" x 3/4" | 10/400   |

### Hose Barb To Female Hose Swivel - Lead Free



• Lead Free

| PART NO. | HB x FHT    | CTN/MSTR |
|----------|-------------|----------|
| G20136   | 1/2" x 3/4" | 50/200   |
| G20137   | 5/8" x 3/4" | 50/200   |
| G20138   | 3/4" x 3/4" | 50/200   |

### Hose Barb To Male Hose



| PART NO. | HB x MHT    | CTN/MSTR |
|----------|-------------|----------|
| G20040   | 3/8" x 3/4" | 10/300   |
| G20041   | 1/2" x 3/4" | 50/200   |
| G20042   | 5/8" x 3/4" | 1/200    |
| G20043   | 3/4" x 3/4" | 50/200   |

### Hose Barb To Male Hose - Lead Free



• Lead Free

| PART NO. | HB x MHT    | CTN/MSTR |
|----------|-------------|----------|
| G20141   | 1/2" x 3/4" | 50/200   |
| G20142   | 5/8" x 3/4" | 50/200   |
| G20143   | 3/4" x 3/4" | 50/200   |

## Male Pipe To Female Hose Swivel



| PART NO. | MPT x FHT   | CTN/MSTR |
|----------|-------------|----------|
| G20045   | 1/4" x 3/4" | 10/300   |
| G20047   | 1/2" x 3/4" | 50/200   |

## Hose WYE



| PART NO. | DESCRIPTION | CTN/MSTR |
|----------|-------------|----------|
| G20050   | 3/4" x 3/4" | 20/200   |

## Hose WYE - Lead Free



• Lead Free

| PART NO. | DESCRIPTION | CTN/MSTR |
|----------|-------------|----------|
| G20150   | 3/4" x 3/4" | 1/100    |

## Garden Hose Shut Off



• Buna-N seals

| PART NO. | DESCRIPTION                        | CTN/MSTR |
|----------|------------------------------------|----------|
| G20051   | Dual shut off/<br>green ABS        | 16/192   |
| G20053   | Brass hose<br>with shut off "wye"  | 15/60    |
| G20054   | CP die cast<br>with shut off "wye" | 20/100   |

## Garden Hose Cap



| PART NO. | FHT             | CTN/MSTR |
|----------|-----------------|----------|
| G20055   | 3/4"            | 100/600  |
| G20056   | 3/4" with chain | 10/600   |

## Garden Hose Cap - Lead Free



• Lead Free

| PART NO. | FHT              | CTN/MSTR |
|----------|------------------|----------|
| G20155   | 3/4" with washer | 1/500    |

## Garden Hose Washer



| PART NO. | SIZE            | CTN/MSTR |
|----------|-----------------|----------|
| G20057   | 3/4" vinyl      | 1/5000   |
| G20057R  | 3/4" red rubber | 1/2500   |

## Garden Hose Filter Washer



| PART NO. | SIZE | CTN/MSTR |
|----------|------|----------|
| G20060   | 3/4" | 10/1000  |

## Evaporation Cooler Drain



| PART NO. | MHT x FPT   | CTN/MSTR |
|----------|-------------|----------|
| G20006   | 3/4" x 1/2" | 25/200   |

## Oetiker PEX Stainless Steel Clamp



- The original patented PEX assembly clamp designated by ASTM F 2098
- Ingenious stepless design provides uniform compression for a 360° watertight seal
- Available for 3/8", 1/2", 3/4" and 1" ASTM F 876/877 pex tubing sizes
- Specified for use with ASTM F 1807 and F 2159 insert fittings

### TECHNICAL DATA

APPLICATION:  
PLUMBING & HYDRONIC  
HEATING  
HOT AND COLD WATER

MAXIMUM OPERATING  
TEMPERATURE: 180°F

MAXIMUM OPERATING  
PRESSURE (PSI): 100

MATERIAL: STAINLESS  
STEEL UNS S304000

| PART NO. | SIZE | CTN/MSTR |
|----------|------|----------|
| C76074   | 3/8" | 100/2000 |
| C76075   | 1/2" | 100/2000 |
| C76076   | 3/4" | 50/2000  |
| C76077   | 1"   | 50/1000  |

## Economy Hose Bibb Vacuum Breaker



- Brass
- 3/4" hose thread
- Vandal-proof breakoff screw
- ASSE 1011

| PART NO. | DESCRIPTION         | CTN/MSTR |
|----------|---------------------|----------|
| G04004   | Economy             | 20/200   |
| G04003LF | Economy - Lead Free | 20/200   |

## Hose Barb To Male Pipe

• Barb refers to hose I.D.



| PART NO. | BARB x MPT   | CTN/MSTR |
|----------|--------------|----------|
| G25022   | 1/8" x 1/8"  | 10/100   |
| G25032   | 3/16" x 1/8" | 10/100   |
| G25034   | 3/16" x 1/4" | 10/100   |
| G25042   | 1/4" x 1/8"  | 10/100   |
| G25044   | 1/4" x 1/4"  | 10/100   |
| G25046   | 1/4" x 3/8"  | 10/100   |
| G25048   | 1/4" x 1/2"  | 10/100   |
| G25052   | 5/16" x 1/8" | 10/100   |
| G25054   | 5/16" x 1/4" | 10/100   |
| G25056   | 5/16" x 3/8" | 10/100   |
| G25062   | 3/8" x 1/8"  | 10/100   |
| G25064   | 3/8" x 1/4"  | 10/100   |
| G25066   | 3/8" x 3/8"  | 10/100   |
| G25068   | 3/8" x 1/2"  | 10/100   |
| G25612   | 3/8" x 3/4"  | 10/100   |
| G25084   | 1/2" x 1/4"  | 10/100   |
| G25086   | 1/2" x 3/8"  | 10/100   |
| G25088   | 1/2" x 1/2"  | 10/100   |
| G25812   | 1/2" x 3/4"  | 10/100   |
| G25106   | 5/8" x 3/8"  | 10/100   |
| G25108   | 5/8" x 1/2"  | 10/100   |
| G25101   | 5/8" x 3/4"  | 10/100   |
| G25128   | 3/4" x 1/2"  | 10/100   |
| G25121   | 3/4" x 3/4"  | 10/100   |
| G25161   | 1" x 3/4"    | 10/100   |
| G25169   | 1" x 1"      | 10/100   |

## Hose Barb To Female Pipe

• Barb refers to hose I.D.



| PART NO. | BARB x FPT   | CTN/MSTR |
|----------|--------------|----------|
| G26022   | 1/8" x 1/8"  | 10/100   |
| G26032   | 3/16" x 1/8" | 10/100   |
| G26034   | 3/16" x 1/4" | 10/100   |
| G26042   | 1/4" x 1/8"  | 10/100   |
| G26044   | 1/4" x 1/4"  | 10/100   |
| G26046   | 1/4" x 3/8"  | 10/100   |
| G26052   | 5/16" x 1/8" | 10/100   |
| G26054   | 5/16" x 1/4" | 10/100   |
| G26056   | 5/16" x 3/8" | 10/100   |
| G26062   | 3/8" x 1/8"  | 10/100   |
| G26064   | 3/8" x 1/4"  | 10/100   |
| G26066   | 3/8" x 3/8"  | 10/100   |
| G26068   | 3/8" x 1/2"  | 10/100   |
| G26084   | 1/2" x 1/4"  | 10/100   |
| G26086   | 1/2" x 3/8"  | 10/100   |
| G26088   | 1/2" x 1/2"  | 10/100   |
| G26121   | 3/4" x 3/4"  | 10/100   |
| G26161   | 1" x 3/4"    | 10/100   |

## Hose Barb To Male Pipe Elbow

• Barb refers to hose I.D.



| PART NO. | BARB x MPT   | CTN/MSTR |
|----------|--------------|----------|
| G27042   | 1/4" x 1/8"  | 10/100   |
| G27044   | 1/4" x 1/4"  | 10/100   |
| G27054   | 5/16" x 1/4" | 10/100   |
| G27062   | 3/8" x 1/8"  | 10/100   |
| G27064   | 3/8" x 1/4"  | 10/100   |
| G27066   | 3/8" x 3/8"  | 10/100   |
| G27068   | 3/8" x 1/2"  | 10/100   |
| G27084   | 1/2" x 1/4"  | 10/100   |
| G27086   | 1/2" x 3/8"  | 10/100   |
| G27088   | 1/2" x 1/2"  | 10/100   |
| G27106   | 5/8" x 3/8"  | 10/100   |
| G27108   | 5/8" x 1/2"  | 10/100   |

## Barb To Barb Hose Splicer

• Barb refers to hose I.D.



| PART NO. | BARB  | CTN/MSTR |
|----------|-------|----------|
| G29003   | 3/16" | 10/100   |
| G29004   | 1/4"  | 10/100   |
| G29005   | 5/16" | 10/100   |
| G29006   | 3/8"  | 10/100   |
| G29008   | 1/2"  | 10/100   |
| G29010   | 5/8"  | 10/100   |

## Hose Barb To Female Ball End Swivel

• Barb refers to hose I.D.



| PART NO. | BARB x NPSM | CTN/MSTR |
|----------|-------------|----------|
| G28044   | 1/4" x 1/4" | 10/100   |
| G28066   | 3/8" x 3/8" | 10/100   |
| G28088   | 1/2" x 1/2" | 10/100   |

## Hose Barb Tee

• Barb refers to hose I.D.



| PART NO. | BARB x BARB X BARB | CTN/MSTR |
|----------|--------------------|----------|
| G24004   | 1/4"               | 10/100   |
| G24006   | 3/8"               | 10/100   |

# PlumBite® Push On Fittings

- Joins copper, CPVC, PE-RT or PEX tubing
- No soldering, glue, heat or external tools required
- Max. Temp 180°F
- Max. Pressure 200 PSI
- Generous warranty
- NSF/ANSI 61, NSF 372, NSF 14, ASSE 1061, UPC and cUPC, and IAPMO Certified
- Lead free



| Coupling (Bulk) |      |          |
|-----------------|------|----------|
| PART NO.        | SIZE | CTN/MSTR |
| C76500LF        | 1/2" | 5/100    |
| C76501LF        | 3/4" | 5/100    |

| Coupling (Bagged) |        |          |
|-------------------|--------|----------|
| PART NO.          | SIZE   | CTN/MSTR |
| C77400LF          | 1/2"   | 6/60     |
| C77401LF          | 3/4"   | 6/24     |
| C77402LF          | 1"     | 4/24     |
| C77403LF          | 1-1/4" | 10/40    |
| C77404LF          | 1-1/2" | 3/18     |
| C77405LF          | 2"     | 2/12     |



| Reducer Coupling (Bulk) |             |          |
|-------------------------|-------------|----------|
| PART NO.                | SIZE        | CTN/MSTR |
| C76502LF                | 3/4" x 1/2" | 15/60    |

| Reducer Coupling (Bagged) |             |          |
|---------------------------|-------------|----------|
| PART NO.                  | SIZE        | CTN/MSTR |
| C77406LF                  | 3/4" x 1/2" | 6/24     |
| C77407LF                  | 1" x 3/4"   | 4/24     |
| C77408LF                  | 1/2" x 3/8" | 4/24     |
| C77409LF                  | 1-1/4" x 1" | 10/50    |
| C77410LF                  | 1/2" x 1/4" | 4/24     |



| Transition Coupling (Bagged) |                   |          |
|------------------------------|-------------------|----------|
| PART NO.                     | SIZE              | CTN/MSTR |
| C77411LF                     | 3/4" Polybutylene | 4/24     |
| C77412LF                     | 3/4" PVC          | 4/24     |



| Repair Coupling (Bulk) |      |          |
|------------------------|------|----------|
| PART NO.               | SIZE | CTN/MSTR |
| C76530LF               | 1/2" | 5/70     |
| C76531LF               | 3/4" | 5/70     |
| C76532LF               | 1"   | 5/40     |

| Repair Coupling with Removal Tool (Bagged) |      |          |
|--|------|----------|
| PART NO.                                   | SIZE | CTN/MSTR |
| C77470LF                                   | 1/2" | 3/24     |
| C77471LF                                   | 3/4" | 3/24     |
| C77472LF                                   | 1"   | 4/24     |



| Adapter C x F (Bulk) |                 |          |
|----------------------|-----------------|----------|
| PART NO.             | SIZE            | CTN/MSTR |
| C76503LF             | 1/2" x 1/2" FPT | 10/100   |
| C76504LF             | 3/4" x 3/4" FPT | 20/60    |
| C76553LF             | 1"x1" FPT       | 5/100    |

| Adapter C x F (Bagged) |                 |          |
|------------------------|-----------------|----------|
| PART NO.               | SIZE            | CTN/MSTR |
| C77413LF               | 1/2" x 1/2" FPT | 6/60     |
| C77514LF               | 3/4" x 3/4" FPT | 4/24     |
| C77416LF               | 1"x1" FPT       | 4/24     |



| Adapter (Bulk) |                 |          |
|----------------|-----------------|----------|
| PART NO.       | SIZE            | CTN/MSTR |
| C76505LF       | 1/2" x 1/2" MPT | 10/200   |
| C76506LF       | 3/4" x 3/4" MPT | 5/100    |



| Adapter (Bagged) |                 |          |
|------------------|-----------------|----------|
| PART NO.         | SIZE            | CTN/MSTR |
| C77417LF         | 1/2" x 1/2" MPT | 6/60     |
| C77418LF         | 3/4" x 3/4" MPT | 6/24     |
| C77419LF         | 1" x 1" MPT     | 4/24     |

| Male Adapter (Bagged) |                 |          |
|-----------------------|-----------------|----------|
| PART NO.              | SIZE            | CTN/MSTR |
| C77420LF              | 1/2" x 3/4" MPT | 4/24     |
| C77421LF              | 3/8" x 1/2" MPT | 4/24     |



| Female Adapter (Bagged) |                 |          |
|-------------------------|-----------------|----------|
| PART NO.                | SIZE            | CTN/MSTR |
| C77422LF                | 1/2" x 3/4" FPT | 4/24     |
| C77423LF                | 3/8" x 1/2" FPT | 4/24     |



| 90° Elbow (Bulk) |      |          |
|------------------|------|----------|
| PART NO.         | SIZE | CTN/MSTR |
| C76507LF         | 1/2" | 10/150   |
| C76508LF         | 3/4" | 5/80     |



| 90° Elbow (Bagged) |        |          |
|--------------------|--------|----------|
| PART NO.           | SIZE   | CTN/MSTR |
| C77425LF           | 1/2"   | 6/60     |
| C77426LF           | 3/4"   | 4/24     |
| C77427LF           | 1"     | 4/24     |
| C77428LF           | 1-1/4" | 5/25     |
| C77429LF           | 1-1/2" | 5/20     |
| C77430LF           | 2"     | 3/12     |



| Elbow C x F (Bagged) |                 |          |
|----------------------|-----------------|----------|
| PART NO.             | SIZE            | CTN/MSTR |
| C77431LF             | 1/2" x 1/2" FPT | 4/24     |



| Elbow C x M (Bagged) |                 |          |
|----------------------|-----------------|----------|
| PART NO.             | SIZE            | CTN/MSTR |
| C77432LF             | 1/2" x 1/2" MPT | 4/24     |



| Drop Ear 90° Elbow F x F (Bagged) |      |          |
|-----------------------------------|------|----------|
| PART NO.                          | SIZE | CTN/MSTR |
| C77434LF                          | 1/2" | 6/24     |



| Drop Ear 90° Elbow C x F (Bulk) |      |          |
|---------------------------------|------|----------|
| PART NO.                        | SIZE | CTN/MSTR |
| C76509LF                        | 1/2" | 10/100   |



| Tee (Bulk) |                    |          |
|------------|--------------------|----------|
| PART NO.   | SIZE               | CTN/MSTR |
| C76510LF   | 1/2"               | 10/100   |
| C76512LF   | 3/4" x 3/4" x 1/2" | 5/50     |
| C76513LF   | 3/4" x 1/2" x 3/4" | 5/50     |
| C76514LF   | 3/4" x 1/2" x 1/2" | 5/50     |
| C76511LF   | 3/4"               | 10/100   |

| Tee (Bagged) |                    |          |
|--------------|--------------------|----------|
| PART NO.     | SIZE               | CTN/MSTR |
| C77440LF     | 1/2"               | 6/24     |
| C77444LF     | 3/4" x 3/4" x 1/2" | 4/24     |
| C77447LF     | 3/4" x 1/2" x 3/4" | 4/24     |
| C77443LF     | 3/4" x 1/2" x 1/2" | 4/24     |
| C77441LF     | 3/4"               | 4/24     |
| C77442LF     | 1"                 | 3/24     |
| C77445LF     | 3/4" x 3/4" x 1/4" | 10/60    |
| C77446LF     | 3/4" x 3/4" x 1"   | 3/24     |



| Cap (Bulk) |      |          |
|------------|------|----------|
| PART NO.   | SIZE | CTN/MSTR |
| C76515LF   | 1/2" | 10/200   |
| C76516LF   | 3/4" | 5/150    |

| Cap (Bagged) |        |          |
|--------------|--------|----------|
| PART NO.     | SIZE   | CTN/MSTR |
| C77450LF     | 1/2"   | 6/60     |
| C77451LF     | 3/4"   | 4/24     |
| C77452LF     | 1"     | 4/24     |
| C77453LF     | 1-1/4" | 10/60    |
| C77454LF     | 1-1/2" | 10/40    |
| C77455LF     | 2"     | 5/25     |



| Ball Valve (Bulk) |      |          |
|-------------------|------|----------|
| PART NO.          | SIZE | CTN/MSTR |
| C76561LF          | 1/2" | 10/60    |
| C76562LF          | 3/4" | 10/40    |

| Ball Valve (Bagged) |        |          |
|---------------------|--------|----------|
| PART NO.            | SIZE   | CTN/MSTR |
| C77460LF            | 1/2"   | 10/100   |
| C77461LF            | 3/4"   | 10/100   |
| C77462LF            | 1"     | 5/50     |
| C77463LF            | 1-1/4" | 10/100   |
| C77464LF            | 1-1/2" | 10/100   |
| C77465LF            | 2"     | 5/50     |



| Check Valve (Bagged) |      |          |
|----------------------|------|----------|
| PART NO.             | SIZE | CTN/MSTR |
| C77466LF             | 1/2" | 20/120   |
| C77467LF             | 3/4" | 10/60    |



| Thermostatic Mixing Valve (Bagged) |      |          |
|------------------------------------|------|----------|
| PART NO.                           | SIZE | CTN/MSTR |
| C77468LF                           | 1/2" | 1/24     |
| C77469LF                           | 3/4" | 1/24     |



| Supply Stop (Bulk) |                        |          |
|--------------------|------------------------|----------|
| PART NO.           | SIZE                   | CTN/MSTR |
| C76570LF           | Straight 1/2" x 3/8"OD | 1/120    |
| C76571LF           | Angle 1/2" x 3/8"OD    | 1/120    |

| Supply Stop (Bagged) |                             |          |
|----------------------|-----------------------------|----------|
| PART NO.             | SIZE                        | CTN/MSTR |
| C77475LF             | Straight 1/2" x 3/8"OD Comp | 6/48     |
| C77476LF             | Straight 1/2" x 1/4"OD Comp | 4/48     |
| C77473LF             | Angle 1/2" x 3/8"OD Comp    | 6/48     |
| C77474LF             | Angle 1/2" x 1/4"OD Comp    | 4/48     |



| Water Heater Connector |                             |          |
|------------------------|-----------------------------|----------|
| PART NO.               | PF x FIP x LENGTH           | CTN/MSTR |
| C76605LF               | 1/2" x 3/4" FIP x 12"       | 10/80    |
| C76606LF               | 1/2" x 3/4" FIP x 15"       | 10/80    |
| C76607LF               | 1/2" x 3/4" FIP x 18"       | 10/80    |
| C76608LF               | 1/2" x 3/4" FIP x 24"       | 10/80    |
| C76612LF               | 3/4" x 3/4" FIP x 12"       | 10/80    |
| C76613LF               | 3/4" x 3/4" FIP x 15"       | 10/80    |
| C77478LF               | 3/4" x 3/4" FIP x 18"       | 6/36     |
| C76614LF               | 3/4" x 3/4" FIP x 18"       | 10/80    |
| C77479LF               | 3/4" x 3/4" FIP x 24"       | 8/48     |
| C76615LF               | 3/4" x 3/4" FIP x 24"       | 10/80    |
| C76616LF               | 1/2" valve x 3/4" FIP x 18" | 1/10     |
| C76617LF               | 3/4" valve x 3/4" FIP x 18" | 1/10     |



| Water Heater Connector with Ball Valve |                       |          |
|--|-----------------------|----------|
| • Lead Free                            |                       |          |
| PART NO.                               | SIZE                  | CTN/MSTR |
| C77477LF                               | 3/4" x 3/4" FIP x 18" | 5/30     |



| Removal Tool Kit (Bagged) |                 |          |
|---------------------------|-----------------|----------|
| • Lead Free               |                 |          |
| PART NO.                  | SIZE            | CTN/MSTR |
| C77488LF                  | 1/4" Through 1" | 6/24     |



| Removal Tool (Bulk) |      |         |
|---------------------|------|---------|
| PART NO.            | SIZE | CTN QTY |
| C76520              | 1/2" | 1/500   |
| C76521              | 3/4" | 5/250   |
| C76522              | 1"   | 5/200   |

| Removal Tool (Bagged) |      |         |
|-----------------------|------|---------|
| PART NO.              | SIZE | CTN QTY |
| C77482LF              | 1/2" | 100/600 |
| C77483LF              | 3/4" | 60/360  |
| C77480LF              | 1/4" | 100/600 |
| C77481LF              | 3/8" | 100/600 |
| C77484LF              | 1"   | 40/240  |



| Large Removal Tool |        |          |
|--------------------|--------|----------|
| PART NO.           | SIZE   | CTN/MSTR |
| C77485LF           | 1-1/4" | 10/100   |
| C77486LF           | 1-1/2" | 20/60    |
| C77487LF           | 2"     | 5/100    |



• Lead Free

| PART NO. | SIZE        | CTN/MSTR |
|----------|-------------|----------|
| C76001LF | 1/2"        | 100/1000 |
| C76002LF | 3/4"        | 50/500   |
| C76003LF | 1"          | 50/300   |
| C76004LF | 3/4" x 1/2" | 50/500   |
| C76005LF | 1" x 3/4"   | 25/250   |

**Brass PEX 90° Elbow**



• Lead Free

| PART NO. | SIZE | CTN/MSTR |
|----------|------|----------|
| C76008LF | 1/2" | 100/500  |
| C76009LF | 3/4" | 50/250   |
| C76010LF | 1"   | 25/100   |

**Brass PEX x MIP 90° Elbow**



• Lead Free

| PART NO. | SIZE        | CTN/MSTR |
|----------|-------------|----------|
| C76013LF | 1/2" x 1/2" | 25/100   |

**Brass PEX Equal Tee**



• Lead Free

| PART NO. | SIZE | CTN/MSTR |
|----------|------|----------|
| C76014LF | 1/2" | 50/500   |
| C76015LF | 3/4" | 50/250   |
| C76016LF | 1"   | 25/100   |

**Brass PEX Tee**



• Lead Free

| PART NO. | SIZE               | CTN/MSTR |
|----------|--------------------|----------|
| C76017LF | 1/2" x 1/2" x 3/4" | 50/250   |
| C76018LF | 3/4" x 1/2" x 1/2" | 50/250   |
| C76019LF | 3/4" x 1/2" x 3/4" | 25/250   |
| C76020LF | 3/4" x 3/4" x 1/2" | 25/250   |
| C76021LF | 1" x 3/4" x 3/4"   | 25/100   |
| C76022LF | 1" x 1" x 1/2"     | 25/100   |
| C76023LF | 1" x 1" x 3/4"     | 25/100   |

**Brass PEX x Female Sweat Adapter**



• Lead Free

| PART NO. | PEX x FSW   | CTN/MSTR |
|----------|-------------|----------|
| C76027LF | 1/2" x 1/2" | 100/500  |
| C76028LF | 3/4" x 3/4" | 50/250   |
| C76029LF | 1/2" x 3/4" | 25/250   |
| C76030LF | 1" x 1"     | 25/200   |

**Brass PEX x Male Adapter**



• Lead Free

| PART NO. | PEX x MIP   | CTN/MSTR |
|----------|-------------|----------|
| C76034LF | 1/2" x 1/2" | 25/400   |
| C76035LF | 1/2" x 3/4" | 25/200   |
| C76036LF | 3/4" x 3/4" | 50/250   |
| C76037LF | 1" x 1"     | 50/250   |
| C76038LF | 1" x 3/4"   | 25/100   |

**Brass PEX x FIP Female Adapter**



• Lead Free

| PART NO. | PEX x FIP   | CTN/MSTR |
|----------|-------------|----------|
| C76041LF | 1/2" x 1/2" | 50/250   |
| C76042LF | 1/2" x 3/4" | 50/200   |
| C76043LF | 3/4" x 3/4" | 25/200   |
| C76044LF | 1" x 1"     | 25/250   |

**Brass PEX x Male Sweat Adapter**



• Lead Free

| PART NO. | PEX x MALE  | CTN/MSTR |
|----------|-------------|----------|
| C76047LF | 3/8" x 1/2" | 50/500   |
| C76048LF | 1/2" x 1/2" | 50/500   |
| C76049LF | 1/2" x 3/4" | 25/100   |
| C76050LF | 3/4" x 3/4" | 50/250   |
| C76051LF | 1" x 1"     | 25/100   |

**Brass PEX x FIP 90° Elbow with Swivel Plastic Nut**



• Lead Free

| PART NO. | PEX x FIP   | CTN/MSTR |
|----------|-------------|----------|
| C76060LF | 1/2" x 1/2" | 50/200   |

**Brass PEX Ball Valve**



• Lead Free

| PART NO. | PEX x PEX | CTN/MSTR |
|----------|-----------|----------|
| B63050LF | 1/2"      | 10/100   |
| B63075LF | 3/4"      | 10/100   |
| B63100LF | 1"        | 6/48     |

**Brass PEX Plug**



• Lead Free

| PART NO. | PEX x FIP | CTN/MSTR |
|----------|-----------|----------|
| C76065LF | 1/2"      | 100/1000 |
| C76066LF | 3/4"      | 100/500  |
| C76067LF | 1"        | 25/250   |

### Brass PEX Crimp Ring



| PART NO. | PEX x FIP | CTN/MSTR |
|----------|-----------|----------|
| C76070   | 3/8"      | 100/2000 |
| C76071   | 1/2"      | 100/2000 |
| C76072   | 3/4"      | 100/1000 |
| C76073   | 1"        | 100/1000 |

### Brass PEX x FIP Drop Ear 90° Elbow



• Lead Free

| PART NO. | PEX x FIP   | EARS | CTN/MSTR |
|----------|-------------|------|----------|
| C76080LF | 1/2" x 1/2" | 2    | 25/200   |
| C76081LF | 3/4" x 1/2" | 2    | 25/200   |
| C76079LF | 1/2" x 1/2" | 3    | 25/200   |

### Oetiker PEX Stainless Steel Clamp



- The original patented PEX assembly clamp designed by ASTM F 2098
- Ingenious stepless design provides uniform compression for a 360° watertight seal
- Available for 3/8", 1/2", 3/4" and 1" ASTM F 876/877 pex tubing sizes
- Specified for use with ASTM F 1807 and F 2159 insert fittings

#### TECHNICAL DATA

APPLICATION:  
PLUMBING & HYDRONIC  
HEATING  
HOT AND COLD WATER

MAXIMUM OPERATING  
TEMPERATURE: 180°F

MAXIMUM OPERATING  
PRESSURE (PSI): 100

MATERIAL: STAINLESS  
STEEL UNS S304000

| PART NO. | SIZE | CTN/MSTR |
|----------|------|----------|
| C76074   | 3/8" | 100/2000 |
| C76075   | 1/2" | 100/2000 |
| C76076   | 3/4" | 50/2000  |
| C76077   | 1"   | 50/1000  |

### Black Plastic PEX Elbow



- Listed by Warnock Hersey
- Meets ASTM F2159, F877 and CSA B1375
- Will not rust or corrode
- Unaffected by household cleaners and chemicals
- Smooth interior for better water flow
- Resists scale build-up
- Lead free

| WHITE PEX | BLACK PEX | SIZE | CTN/MSTR |
|-----------|-----------|------|----------|
| C76702    | C76751    | 1/2" | 50/500   |
| C76703    | C76752    | 3/4" | 50/350   |
| C76720    | C76753    | 1"   | 50/150   |

### Plastic PEX Equal Tee



- Listed by Warnock Hersey
- Meets ASTM F2159, F877 and CSA B1375
- Will not rust or corrode
- Unaffected by household cleaners and chemicals
- Smooth interior for better water flow
- Resists scale build-up
- Lead free

| WHITE PEX | BLACK PEX | SIZE | CTN/MSTR |
|-----------|-----------|------|----------|
| C76700    | C76762    | 1/2" | 50/400   |
| C76701    | C76763    | 3/4" | 50/200   |
| —         | C76773    | 1"   | 50/200   |

### Black Plastic PEX Reducing Tee



- Listed by Warnock Hersey
- Meets ASTM F2159, F877 and CSA B1375
- Will not rust or corrode
- Unaffected by household cleaners and chemicals
- Smooth interior for better water flow
- Resists scale build-up
- Lead free

| WHITE PEX | BLACK PEX | SIZE               | CTN/MSTR |
|-----------|-----------|--------------------|----------|
| C76709    | C76764    | 1/2" x 1/2" x 3/4" | 25/300   |
| C76710    | C76765    | 3/4" x 1/2" x 1/2" | 25/300   |
| C76711    | C76766    | 3/4" x 1/2" x 3/4" | 25/300   |
| C76712    | C76767    | 3/4" x 3/4" x 1/2" | 25/300   |
| —         | C76774    | 3/4" x 3/4" x 1"   | 25/300   |
| —         | C76772    | 1" x 3/4" x 3/4"   | 25/300   |
| —         | C76776    | 1" x 3/4" x 1"     | 25/300   |
| —         | C76770    | 1" x 1" x 1/2"     | 25/300   |
| —         | C76775    | 1" x 1" x 3/4"     | 25/300   |

### Black Plastic PEX Coupling



- Listed by Warnock Hersey
- Meets ASTM F2159, F877 and CSA B1375
- Will not rust or corrode
- Unaffected by household cleaners and chemicals
- Smooth interior for better water flow
- Resists scale build-up
- Lead free

| WHITE PEX | BLACK PEX | SIZE        | CTN/MSTR |
|-----------|-----------|-------------|----------|
| C76704    | C76754    | 1/2"        | 50/1000  |
| C76705    | C76755    | 3/4"        | 50/600   |
| C76706    | C76756    | 3/4" x 1/2" | 50/600   |
| C76722    | C76757    | 1"          | 50/200   |
| C76723    | C76758    | 1" x 3/4"   | 50/300   |

### Black Plastic PEX Adapter



- Listed by Warnock Hersey
- Meets ASTM F2159, F877 and CSA B1375
- Will not rust or corrode
- Unaffected by household cleaners and chemicals
- Smooth interior for better water flow
- Resists scale build-up
- Lead free

| WHITE PEX | BLACK PEX | PEX x MPT   | CTN/MSTR |
|-----------|-----------|-------------|----------|
| C76707    | C76759    | 1/2" x 1/2" | 25/500   |
| C76708    | C76760    | 3/4" x 3/4" | 25/300   |
| C76727    | C76761    | 1" x 1"     | 25/150   |

### Black Plastic PEX Plug



- Listed by Warnock Hersey
- Meets ASTM F2159, F877 and CSA B1375
- Will not rust or corrode
- Unaffected by household cleaners and chemicals
- Smooth interior for better water flow
- Resists scale build-up
- Lead free

| WHITE PEX | BLACK PEX | SIZE | CTN/MSTR |
|-----------|-----------|------|----------|
| C76740    | C76768    | 1/2" | 100/2000 |
| C76741    | C76769    | 3/4" | 100/1000 |
| —         | C76771    | 1"   | 100/1000 |

## Brass Ball Valve

- Full-port design
- Forged brass body up to 4"
- Chrome plated brass ball
- Adjustable packing nut
- Non-sticking teflon seats
- 1/4 turn zinc plated steel handle

- 600 PSI, WOG (water, oil, gas)
- Working steam pressure: 150 PSI
- Blowout-proof stem
- Teflon packing for safety against leakage
- UPC listed
- Lead free



### Threaded

| PART NO. | SIZE   | CTN/MSTR |
|----------|--------|----------|
| B67200   | 3/8"   | 20/100   |
| B67201   | 1/2"   | 50/100   |
| B67202   | 3/4"   | 30/60    |
| B67203   | 1"     | 20/40    |
| B67204   | 1-1/4" | 12/24    |
| B67205   | 1-1/2" | 9/18     |
| B67206   | 2"     | 6/12     |



### Sweat

| PART NO. | SIZE   | CTN/MSTR |
|----------|--------|----------|
| B67208   | 1/2"   | 50/100   |
| B67209   | 3/4"   | 30/60    |
| B67210   | 1"     | 20/40    |
| B67211   | 1-1/4" | 12/24    |
| B67212   | 1-1/2" | 9/18     |
| B67213   | 2"     | 6/12     |

## PVC Ball Valve Solvent Ends

- One piece body construction
- Standard port
- EPDM seats and o-rings
- Working pressure 150 PSI at 73°F
- Quarter turn operation
- Not for compressed air
- Ideal for swimming pools, irrigation and water supply uses

- Solvent ends comply with ASTM D 2466
- Threaded ends comply with ANSI B2.1
- For cold water lines
- Large flow opening



| PART NO. | SIZE   | CTN/MSTR |
|----------|--------|----------|
| B90050   | 1/2"   | 1/162    |
| B90075   | 3/4"   | 1/80     |
| B90100   | 1"     | 1/84     |
| B90125   | 1-1/4" | 1/50     |
| B90150   | 1-1/2" | 1/50     |
| B90200   | 2"     | 1/24     |
| B90250   | 2-1/2" | 1/15     |
| B90300   | 3"     | 1/2      |
| B90400   | 4"     | 1/1      |

## PVC Ball Valve with Threaded Ends

- One-piece body construction
- Standard port
- EPDM seats and o-rings
- Working pressure 150 PSI at 73°F
- Quarter turn operation
- Not for compressed air
- Ideal for swimming pools, irrigation and water supply uses

- Solvent ends comply with ASTM D 2466
- Threaded ends comply with ANSI B2.1
- For cold water lines
- Large flow opening



| PART NO. | SIZE   | CTN/MSTR |
|----------|--------|----------|
| B91050   | 1/2"   | 1/162    |
| B91075   | 3/4"   | 25/100   |
| B91100   | 1"     | 1/84     |
| B91125   | 1-1/4" | 1/60     |
| B91150   | 1-1/2" | 1/40     |
| B91200   | 2"     | 6/24     |
| B91250   | 2-1/2" | 1/16     |
| B91300   | 3"     | 1/10     |
| B91400   | 4"     | 1/1      |

## Inline PVC Check Valve



- Stainless steel spring
- EPDM seats
- Maintenance-free operation
- .5 PSI required to open unit
- 200 PSI static pressure rating at 77°F
- Use anywhere to stop backflow and siphoning
- Suitable for swimming pools, hot tubs, spas and solar installations

| PART NO. | SIZE   | CTN/MSTR |
|----------|--------|----------|
| C30050   | 1/2"   | 30/120   |
| C30075   | 3/4"   | 30/120   |
| C30100   | 1"     | 16/64    |
| C30125   | 1-1/4" | 12/48    |
| C30150   | 1-1/2" | 8/32     |
| C30200   | 2"     | 4/16     |

### Threaded Ends

| PART NO. | SIZE   | CTN/MSTR |
|----------|--------|----------|
| C31050   | 1/2"   | 30/120   |
| C31075   | 3/4"   | 30/120   |
| C31100   | 1"     | 16/64    |
| C31125   | 1-1/4" | 12/48    |
| C31150   | 1-1/2" | 8/32     |
| C31200   | 2"     | 4/16     |



**“68” Series Stainless Steel Gear Clamp**



- 9/16" band
- All stainless, 300 grade construction
- Ideal for well drilling and applications requiring marine grade stainless clamps
- Made in USA
- CARTON QUANTITIES ONLY

MADE IN THE  
**USA**

| PART NO. | TRADE SIZE | SIZE            | CTN/MSTR |
|----------|------------|-----------------|----------|
| G14006   | 6          | 3/8" - 7/8"     | 10/200   |
| G14008   | 8          | 7/16" - 1"      | 10/200   |
| G14010   | 10         | 1/2" - 1-1/16"  | 10/500   |
| G14012   | 12         | 1/2" - 1-1/4"   | 10/500   |
| G14016   | 16         | 11/16" - 1-1/2" | 10/500   |
| G14020   | 20         | 3/4" - 1-3/4"   | 10/500   |
| G14024   | 24         | 1" - 2"         | 10/500   |
| G14028   | 28         | 1-1/4" - 2-1/4" | 10/500   |
| G14032   | 32         | 1-1/2" - 2-1/2" | 10/500   |
| G14036   | 36         | 1-3/4" - 2-3/4" | 10/200   |
| G14040   | 40         | 1-1/8" - 3"     | 10/200   |
| G14044   | 44         | 2-1/4" - 3-1/4" | 10/200   |
| G14048   | 48         | 1-5/8" - 3-1/2" | 10/200   |
| G14052   | 52         | 1-7/8" - 3-3/4" | 10/100   |
| G14056   | 56         | 2-1/8" - 4"     | 10/100   |
| G14064   | 64         | 2-1/2" - 4-1/2" | 10/100   |
| G14072   | 72         | 3" - 5"         | 10/100   |
| G14080   | 80         | 3-1/2" - 5-1/2" | 10/100   |
| G14088   | 88         | 4" - 6"         | 10/100   |
| G14096   | 96         | 4-1/2" - 6-1/2" | 10/100   |
| G14104   | 104        | 5" - 7"         | 10/100   |

**Stainless Steel Gear Clamp**



- 1/2" band
- All stainless
- Hanging bag
- CARTON QUANTITIES ONLY

| PART NO. | TRADE SIZE | SIZE            | CTN/MSTR |
|----------|------------|-----------------|----------|
| G16006   | 6          | 3/8" - 7/8"     | 200/2000 |
| G16008   | 8          | 7/16" - 1"      | 100/1000 |
| G16010   | 10         | 1/2" - 1-1/16"  | 100/1000 |
| G16012   | 12         | 1/2" - 1-1/4"   | 100/1000 |
| G16016   | 16         | 5/8" - 1-1/2"   | 100/1000 |
| G16020   | 20         | 3/4" - 1-3/4"   | 100/1000 |
| G16024   | 24         | 1" - 2"         | 100/1000 |
| G16028   | 28         | 1-3/8" - 2-1/4" | 100/1000 |
| G16032   | 32         | 1-5/8" - 2-1/2" | 100/1000 |
| G16036   | 36         | 1-7/8" - 2-3/4" | 100/1000 |
| G16040   | 40         | 2" - 3"         | 100/500  |
| G16044   | 44         | 2-1/4" - 3-1/4" | 100/500  |
| G16048   | 48         | 2-5/8" - 3-1/2" | 100/500  |
| G16052   | 52         | 2-7/8" - 3-3/4" | 100/500  |
| G16056   | 56         | 3" - 4"         | 100/500  |
| G16064   | 64         | 2-1/2" - 4-1/2" | 100/500  |
| G16072   | 72         | 3" - 5"         | 100/500  |
| G16080   | 80         | 3-1/2" - 5-1/2" | 50/250   |
| G16088   | 88         | 4" - 6"         | 50/250   |
| G16096   | 96         | 4-1/2" - 6-1/2" | 50/250   |
| G16104   | 104        | 5" - 7"         | 50/250   |

**Asbestos-Free Full Face Gasket**



- Meets ASTM F152, F36A and F146
- 1/16" thick
- Temperature rating of 750°F
- Manufactured of Garlock 4401

| PART NO. | SIZE   | LBS. | CTN/MSTR |
|----------|--------|------|----------|
| G54075   | 3/4"   | 150  | 1/1      |
| G54001   | 1"     | 150  | 1/1      |
| G54013   | 1-1/4" | 150  | 1/1      |
| G54015   | 1-1/2" | 150  | 1/1      |
| G54002   | 2"     | 150  | 1/1      |
| G54025   | 2-1/2" | 150  | 1/1      |
| G54003   | 3"     | 150  | 1/1      |
| G54035   | 3-1/2" | 150  | 1/1      |
| G54004   | 4"     | 150  | 1/1      |
| G54005   | 5"     | 150  | 1/1      |
| G54006   | 6"     | 150  | 1/1      |
| G54008   | 8"     | 150  | 1/1      |
| G54010   | 10"    | 150  | 1/1      |
| G54012   | 12"    | 150  | 1/1      |

**Asbestos-Free Ring Gasket**



- Meets ASTM F152, F36A and F146
- 1/16" thick
- Temperature rating of 750°F
- Manufactured of Garlock 4401

| PART NO. | SIZE   | LBS. | CTN/MSTR |
|----------|--------|------|----------|
| G53050   | 1/2"   | 150  | 1/1      |
| G53075   | 3/4"   | 150  | 1/1      |
| G53001   | 1"     | 150  | 1/1      |
| G53013   | 1-1/4" | 150  | 1/1      |
| G53015   | 1-1/2" | 150  | 1/1      |
| G53002   | 2"     | 150  | 1/1      |
| G53025   | 2-1/2" | 150  | 1/1      |
| G53003   | 3"     | 150  | 1/1      |
| G53035   | 3-1/2" | 150  | 1/1      |
| G53004   | 4"     | 150  | 1/1      |
| G53005   | 5"     | 150  | 1/1      |
| G53006   | 6"     | 150  | 1/1      |
| G53008   | 8"     | 150  | 1/1      |
| G53010   | 10"    | 150  | 1/1      |
| G53012   | 12"    | 150  | 1/1      |

**Red Rubber Full Face Gasket**



- Meets ASTM D1330
- 1/16" thick
- Temperature rating of 350° F

| PART NO. | SIZE   | LBS. | CTN/MSTR |
|----------|--------|------|----------|
| G51050   | 1/2"   | 150  | 1/1      |
| G51075   | 3/4"   | 150  | 1/1      |
| G51001   | 1"     | 150  | 1/1      |
| G51013   | 1-1/4" | 150  | 1/1      |
| G51015   | 1-1/2" | 150  | 1/1      |
| G51002   | 2"     | 150  | 1/1      |
| G51025   | 2-1/2" | 150  | 1/1      |
| G51003   | 3"     | 150  | 1/1      |
| G51035   | 3-1/2" | 150  | 1/1      |
| G51004   | 4"     | 150  | 1/1      |
| G51005   | 5"     | 150  | 1/1      |
| G51006   | 6"     | 150  | 1/1      |
| G51008   | 8"     | 150  | 1/1      |
| G51010   | 10"    | 150  | 1/1      |
| G51012   | 12"    | 150  | 1/1      |

## Red Rubber Ring Gasket



- Meets ASTM D1330
- 1/16" thick
- Temperature rating of 350° F

| PART NO. | SIZE   | LBS. | CTN/MSTR |
|----------|--------|------|----------|
| G52075   | 3/4"   | 150  | 1/1      |
| G52001   | 1"     | 150  | 1/1      |
| G52013   | 1-1/4" | 150  | 1/1      |
| G52015   | 1-1/2" | 150  | 1/1      |
| G52002   | 2"     | 150  | 1/1      |
| G52025   | 2-1/2" | 150  | 1/1      |
| G52003   | 3"     | 150  | 1/1      |
| G52035   | 3-1/2" | 150  | 1/1      |
| G52004   | 4"     | 150  | 1/1      |
| G52005   | 5"     | 150  | 1/1      |
| G52006   | 6"     | 150  | 1/1      |
| G52008   | 8"     | 150  | 1/1      |
| G52010   | 10"    | 150  | 1/1      |
| G52012   | 12"    | 150  | 1/1      |

## Asbestos-Free Full Face Gasket Kit



- Meets ASTM F152, F36A and F146
- Gaskets are 1/16" thick
- ASTM A307 hex bolts and heavy hex nuts
- Constructed of Garlock 4401

| PART NO. | SIZE   | BOLT SIZE     | BOLTS/KIT | CTN/MSTR |
|----------|--------|---------------|-----------|----------|
| G54115   | 1-1/2" | 1/2" x 2-1/4" | 4         | 1/1      |
| G54102   | 2"     | 5/8" x 2-3/4" | 4         | 1/1      |
| G54125   | 2-1/2" | 5/8" x 3"     | 4         | 1/1      |
| G54103   | 3"     | 5/8" x 3"     | 4         | 1/1      |
| G54104   | 4"     | 5/8" x 3"     | 8         | 1/1      |
| G54105   | 5"     | 3/4" x 3-1/4" | 8         | 1/1      |
| G54106   | 6"     | 3/4" x 3-1/4" | 8         | 1/1      |
| G54108   | 8"     | 3/4" x 3-1/2" | 8         | 1/1      |
| G54110   | 10"    | 7/8" x 3-3/4" | 12        | 1/1      |
| G54112   | 12"    | 7/8" x 4"     | 12        | 1/1      |

## Asbestos-Free Ring Gasket Kit



- Meets ASTM F152, F36A and F146
- Gaskets are 1/16" thick
- ASTM A307 hex bolts and heavy hex nuts
- Constructed of Garlock 4401

| PART NO. | SIZE   | BOLT SIZE     | BOLTS/KIT | CTN/MSTR |
|----------|--------|---------------|-----------|----------|
| G53101   | 1"     | 1/2" x 2"     | 4         | 1/1      |
| G53113   | 1-1/4" | 1/2" x 2-1/4" | 4         | 1/1      |
| G53115   | 1-1/2" | 1/2" x 2-1/4" | 4         | 1/1      |
| G53102   | 2"     | 5/8" x 2-3/4" | 4         | 1/1      |
| G53125   | 2-1/2" | 5/8" x 3"     | 4         | 1/1      |
| G53103   | 3"     | 5/8" x 3"     | 4         | 1/1      |
| G53104   | 4"     | 5/8" x 3"     | 8         | 1/1      |
| G53105   | 5"     | 3/4" x 3-1/4" | 8         | 1/1      |
| G53106   | 6"     | 3/4" x 3-1/4" | 8         | 1/1      |
| G53108   | 8"     | 3/4" x 3-1/2" | 8         | 1/1      |
| G53110   | 10"    | 7/8" x 3-3/4" | 12        | 1/1      |

## Red Rubber Full Face Gasket Kit



- Meets ASTM D1330
- Gaskets are 1/16" thick
- ASTM A307 hex bolts and heavy hex nuts

| PART NO. | SIZE   | BOLT SIZE     | BOLTS/KIT | CTN/MSTR |
|----------|--------|---------------|-----------|----------|
| G51101   | 1"     | 1/8" x 2-3/8" | 4         | 1/1      |
| G51102   | 2"     | 5/8" x 2-3/4" | 4         | 1/1      |
| G51125   | 2-1/2" | 5/8" x 3"     | 4         | 1/1      |
| G51103   | 3"     | 5/8" x 3"     | 4         | 1/1      |
| G51135   | 3-1/2" | 5/8" x 3"     | 8         | 1/1      |
| G51104   | 4"     | 5/8" x 3"     | 8         | 1/1      |
| G51105   | 5"     | 3/4" x 3-1/4" | 8         | 1/1      |
| G51106   | 6"     | 3/4" x 3-1/4" | 8         | 1/1      |
| G51108   | 8"     | 3/4" x 3-1/2" | 8         | 1/1      |
| G51110   | 10"    | 7/8" x 3-3/4" | 12        | 1/1      |
| G51112   | 12"    | 7/8" x 4"     | 12        | 1/1      |

## Red Rubber Ring Gasket Kit



- Meets ASTM D1330
- Gaskets are 1/16" thick
- ASTM A307 hex bolts and heavy hex nuts

| PART NO. | SIZE   | BOLT SIZE     | BOLTS/KIT | CTN/MSTR |
|----------|--------|---------------|-----------|----------|
| G52115   | 1-1/2" | 1/2" x 2-1/4" | 4         | 1/1      |
| G52102   | 2"     | 5/8" x 2-3/4" | 4         | 1/1      |
| G52125   | 2-1/2" | 5/8" x 3"     | 4         | 1/1      |
| G52103   | 3"     | 5/8" x 3"     | 4         | 1/1      |
| G52104   | 4"     | 5/8" x 3"     | 8         | 1/1      |
| G52105   | 5"     | 3/4" x 3-1/4" | 8         | 1/1      |
| G52106   | 6"     | 3/4" x 3-1/4" | 8         | 1/1      |
| G52108   | 8"     | 3/4" x 3-1/2" | 8         | 1/1      |
| G52110   | 10"    | 7/8" x 3-3/4" | 12        | 1/1      |

## Insulation Kit with Poly Sleeves



- Use with flange connection kits
- To form dielectric connection use fiber washers

| PART NO. | SIZE   | #SLEEVES | #WASHERS | CTN/MSTR |
|----------|--------|----------|----------|----------|
| G55150   | 1-1/2" | 4        | 8        | 1/1      |
| G55200   | 2"     | 4        | 8        | 1/1      |
| G55250   | 2-1/2" | 4        | 8        | 1/1      |
| G55300   | 3"     | 4        | 8        | 1/1      |
| G55350   | 4"     | 8        | 16       | 1/1      |
| G55400   | 5"     | 8        | 16       | 1/1      |
| G55450   | 6"     | 8        | 16       | 1/1      |
| G55500   | 8"     | 8        | 16       | 1/1      |
| G55550   | 10"    | 12       | 24       | 1/1      |
| G55600   | 12"    | 12       | 24       | 1/1      |

## Asbestos-Free Ring Gasket Kit with Insulation Kit



- Meets ASTM F152, F36A and F146
- Gaskets are 1/16" thick
- Temperature rating of 750°F
- Manufactured of Garlock 4401
- To form dielectric connection use fiber washers

| PART NO. | SIZE   | BOLT SIZE     | BOLTS/KIT | CTN/MSTR |
|----------|--------|---------------|-----------|----------|
| G53203   | 3"     | 5/8" x 3"     | 4         | 1/1      |
| G53204   | 4"     | 5/8" x 3"     | 8         | 1/1      |
| G53206   | 6"     | 3/4" x 3-1/4" | 8         | 1/1      |
| G53215   | 1-1/2" | 1/2" x 2-1/4" | 4         | 1/1      |
| G53225   | 2-1/2" | 5/8" x 3"     | 4         | 1/1      |

### Asbestos-Free Full Face Gasket Kit w/ih Insulation Kit



- Meets ASTM F152, F36A and F146
- Gaskets are 1/16" thick
- Temperature rating of 750°F
- Manufactured of Garlock 4401
- To form dielectric connection use fiber washers

| PART NO. | SIZE   | BOLT SIZE     | BOLTS/KIT | CTN/MSTR |
|----------|--------|---------------|-----------|----------|
| G54215   | 1-1/2" | 1/2" x 2-1/4" | 4         | 1/1      |
| G54202   | 2"     | 5/8" x 2-3/4" | 4         | 1/1      |
| G54225   | 2-1/2" | 5/8" x 3"     | 4         | 1/1      |
| G54203   | 3"     | 5/8" x 3"     | 4         | 1/1      |
| G54204   | 4"     | 5/8" x 3"     | 8         | 1/1      |
| G54205   | 5"     | 3/4" x 3-1/4" | 8         | 1/1      |
| G54206   | 6"     | 3/4" x 3-1/4" | 8         | 1/1      |
| G54208   | 8"     | 3/4" x 3-1/2" | 8         | 1/1      |
| G54210   | 10"    | 7/8" x 3-3/4" | 12        | 1/1      |
| G54212   | 12"    | 7/8" x 4"     | 12        | 1/1      |

### Red Rubber Sheet Packing/Gasket Material



- Priced per roll (approximately 100 pounds)
- FULL ROLLS ONLY

| PART NO. | SIZE            | CTN/MSTR |
|----------|-----------------|----------|
| G55016   | 1/16"x 36"x 60' | 1/1      |
| G55018   | 1/8"x 36"x 30'  | 1/1      |
| G55014   | 1/4"x 36"x 15'  | 1/1      |

### Red Rubber Sheet Packing/Gasket Material



- Single 3'x 5' sheet

| PART NO. | MATERIAL             | THICKNESS | CTN/MSTR |
|----------|----------------------|-----------|----------|
| G55116   | Red Rubber (1 sheet) | 1/16"     | 1/1      |
| G55118   | Red Rubber (1 sheet) | 1/8"      | 1/1      |

### Gasket and Washer Materials



- Make your own gaskets and washers
- 6"x 6" square in hanging display bag

| PART NO. | MATERIAL                | THICKNESS | CTN/MSTR |
|----------|-------------------------|-----------|----------|
| G55001   | Red Rubber (1 sheet)    | 1/16"     | 1/1      |
| G55002   | Black Fiber (1 sheet)   | 1/32"     | 1/1      |
| G55003   | Cork/Rubber (1 sheet)   | 1/16"     | 1/1      |
| G55004   | Combo (1 sheet of each) | —         | 1/1      |

### Circulator Flange Gasket Pair



- SOLD IN PAIRS ONLY

| PART NO. | DESCRIPTION              | CTN/MSTR |
|----------|--------------------------|----------|
| G55005   | Circulator flange gasket | 1/1      |

### Dual Check Backflow Preventer



- Female by female
- Forged brass body
- 150 psi
- Acetyl-resin check modules
- Stainless steel spring
- 180° F maximum temperature
- Lead free

| PART NO. | SIZE | CTN/MSTR |
|----------|------|----------|
| B59001LF | 3/4" | 1/100    |
| B59002LF | 1"   | 1/25     |

### Sewer Popper™ Cleanout and Relief Valve



MADE IN THE  
**USA**

- Automatic pop-up releases sewage overflow outside the house
- Prevents thousands of dollars in property damages
- Eliminates health hazards associated with sewage overflow
- Vandal- and tamper-resistant center
- Threaded for 3" or 4" pipe
- Constructed of white PVC
- Threaded unit can be used with PVC or ABS
- For cast iron pipe, use standard no hub clamp
- Meets Southern Building Code Section 301.10, Principle No.10
- Patent No. 5,209,257

| PART NO. | DESCRIPTION          | CTN/MSTR |
|----------|----------------------|----------|
| S62304   | 3"x 4" Sewer Popper™ | 1/6      |

## 10" Economy Plastic Water Meter Box

MADE IN THE  
**USA**



- Snap-in green lid
- 96 per pallet
- Drop in reader cover

| PART NO. | DESCRIPTION                       | CTN/MSTR |
|----------|-----------------------------------|----------|
| M06001   | 10" rectangular box and green lid | 1/96     |
| M06002   | 10" green snap-in lid only        | 1/360    |

**Note:** All items shown are for non-vehicular applications. Concrete and asphalt installations are not recommended for plastic parts.

## 12" Plastic Water Meter Box

MADE IN THE  
**USA**

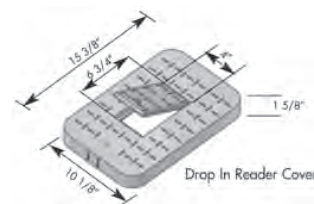


| PART NO. | DESCRIPTION                          | CTN/MSTR |
|----------|--------------------------------------|----------|
| M12001   | 12" box and solid green lid          | 1/72     |
| M12002   | 12" box and black reader lid         | 1/72     |
| M12022   | 12" box and black lid marked "sewer" | 1/72     |
| M12003   | 6" extension                         | 1/42     |
| M12005   | 12" solid green lid only             | 1/216    |
| M12006   | 12" black reader lid only            | 1/216    |
| M12009   | 12" box and solid black lid          | 1/72     |

**Note:** All items shown are for non-vehicular applications. Concrete and asphalt installations are not recommended for plastic parts.

## 12" Plastic Water Meter Box with Solid Cast Iron Lid

MADE IN THE  
**USA**

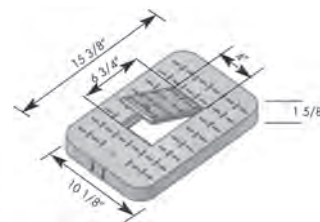


- Drop in solid lid

| PART NO. | DESCRIPTION                            | CTN/MSTR |
|----------|--|----------|
| M12100   | 12" box with black solid cast iron lid | 1/72     |
| M12085   | Black cast iron lid only               | 1/230    |

**Note:** All items shown are for non-vehicular applications. Concrete and asphalt installations are not recommended for plastic parts.

## 12" Plastic Standard Water Meter Box with Plastic Lid and Cast Iron Reader

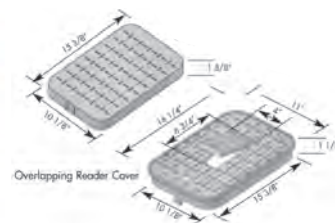


- 72 per pallet
- Drop in reader lid

| PART NO. | DESCRIPTION                                       | CTN/MSTR |
|----------|---|----------|
| M12004   | 12" box with plastic lid & black cast iron reader | 1/72     |

**Note:** All items shown are for non-vehicular applications. Concrete and asphalt installations are not recommended for plastic parts.

## 12" Plastic Irrigation Box

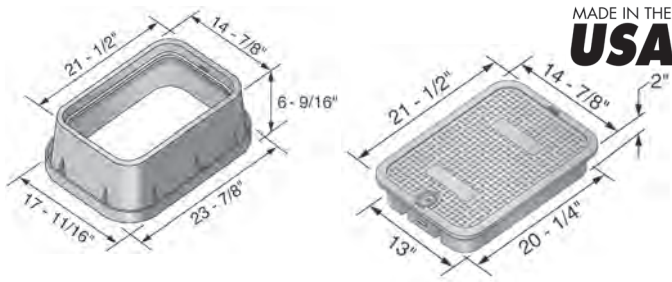


- 6" deep
- Drop in solid lid or overlapping reader lid available

| PART NO. | DESCRIPTION               | CTN/MSTR |
|----------|---------------------------|----------|
| M12007   | 12" box with green lid    | 1/1      |
| M12005   | 12" solid green lid only  | 1/1      |
| M12006   | 12" black reader lid only | 1/1      |

**Note:** All items shown are for non-vehicular applications. Concrete and asphalt installations are not recommended for plastic parts.

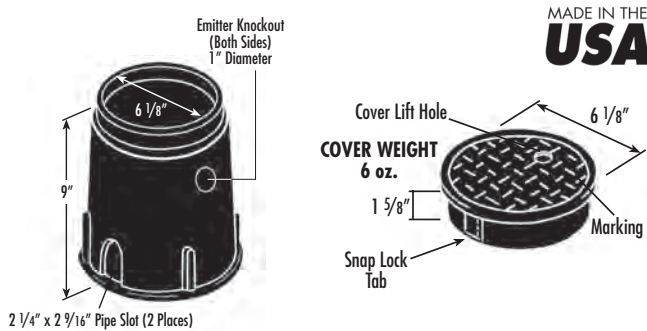
## 15" Jumbo Water Meter Box



| PART NO. | DESCRIPTION                  | CTN/MSTR |
|----------|------------------------------|----------|
| M15001   | 15" box and green solid lid  | 1/48     |
| M15009   | 6" extension for M15001      | 1/36     |
| M15002   | 15" box and black reader lid | 1/48     |
| M15005   | 15" black reader lid only    | 1/96     |

**Note:** All items shown are for non-vehicular applications. Concrete and asphalt installations are not recommended for plastic parts.

## 6" Residential Valve Box

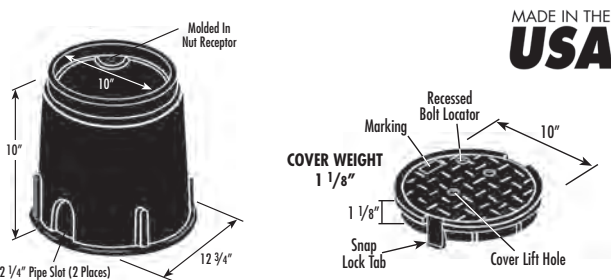


- 9" deep
- Snap-in green lid
- Overlapping cover keeps dirt or grass from between body and lid
- Valve box can be extended with any 6" plastic or iron pipe

| PART NO. | DESCRIPTION                 | CTN/MSTR |
|----------|-----------------------------|----------|
| M06006   | 6" valve box with green lid | 1/36     |
| M06007   | 6" green snap-in lid only   | 1/10     |

**Note:** All items shown are for non-vehicular applications. Concrete and asphalt installations are not recommended for plastic parts.

## 10" Round Valve Box



- Snap-in green lid
- Overlapping cover keeps dirt or grass from between body and lid
- 96 per pallet

| PART NO. | DESCRIPTION                          | CTN/MSTR |
|----------|--------------------------------------|----------|
| M06010   | 10" round body and snap-in green lid | 1/96     |

**Note:** All items shown are for non-vehicular applications. Concrete and asphalt installations are not recommended for plastic parts.

## Gas Testing Equipment



- Large 4" face
- Class 1A gauge
- 5 lb. gas test gauge/15 lb. gas test gauge
- 1/10 # increments
- Inches of mercury scale
- External set hand
- Bellows design
- 1/4 NPT connection
- Gauge meets all requirements of the City of Houston code Word 94-108, Section 1204.3.2, revised January 18, 2001
- Individually boxed
- ALL SALES FINAL; NO WARRANTY; NO RETURN

| PART NO. | DESCRIPTION                | CTN/MSTR |
|----------|----------------------------|----------|
| G60055   | 15 lb. gas test gauge only | 1/20     |
| G60005   | 5 lb. gas test gauge only  | 1/20     |

## Liquid Filled Pressure Gauge



- Polished 304 stainless steel case with vent plug
- 2-1/2" face (glass)
- +/- 1.5% accuracy
- Glycerin filled for use where vibration or pressure pulsation occur
- -50 to 150°F operating temperature
- 1/4" NPT bottom connection
- Individually boxed

| PART NO. | DESCRIPTION | CTN/MSTR |
|----------|-------------|----------|
| J40553   | 0-30 PSI    | 1/50     |
| J40554   | 0-60 PSI    | 1/50     |
| J40555   | 0-100 PSI   | 1/50     |
| J40556   | 0-200 PSI   | 1/50     |
| J40557   | 0-300 PSI   | 1/50     |

## Pressure Gauge



- Steel case
- Shatterproof face
- 1/4" MIP brass lower connection
- Applicable with air, water, oil and gas - anything which does not attack brass
- Not for use on oxygen service
- Class 2.5-2% accuracy
- Individually boxed

| PART NO. | FACE SIZE | PRESSURE RATING | CTN/MSTR |
|----------|-----------|-----------------|----------|
| G60015   | 2"        | 15 PSI          | 1/100    |
| G60030   | 2"        | 30 PSI          | 1/100    |
| G60060   | 2"        | 60 PSI          | 1/100    |
| G60100   | 2"        | 100 PSI         | 1/100    |
| G60160   | 2"        | 160 PSI         | 1/100    |
| G60200   | 2"        | 200 PSI         | 1/100    |
| G60300   | 2"        | 300 PSI         | 1/100    |
| G61015   | 2-1/2"    | 15 PSI          | 1/100    |
| G61030   | 2-1/2"    | 30 PSI          | 1/60     |
| G61060   | 2-1/2"    | 60 PSI          | 1/100    |
| G61100   | 2-1/2"    | 100 PSI         | 1/100    |
| G61160   | 2-1/2"    | 160 PSI         | 1/100    |
| G61200   | 2-1/2"    | 200 PSI         | 1/100    |
| G61300   | 2-1/2"    | 300 PSI         | 1/100    |
| G62030   | 3-1/2"    | 30 PSI          | 1/50     |
| G62060   | 3-1/2"    | 60 PSI          | 1/50     |
| G62100   | 3-1/2"    | 100 PSI         | 1/50     |
| G62200   | 3-1/2"    | 200 PSI         | 1/50     |
| G62300   | 3-1/2"    | 300 PSI         | 1/50     |

## Pigtail Syphon



- Steel construction
- For use with gauges on steam line
- 1/4" MPT x 1/4" MPT

| PART NO. | DESCRIPTION | CTN/MSTR |
|----------|-------------|----------|
| G60000   | Straight    | 20/200   |
| G60001   | 90° Angle   | 10/200   |

## Water Test Gauge



- Steel case with 2-1/2" shatterproof face
- 3/4" female brass hose connection
- Individually boxed

| PART NO. | DESCRIPTION                | CTN/MSTR |
|----------|----------------------------|----------|
| J66300   | 300 PSI                    | 1/50     |
| J66301   | 300 PSI with indicator arm | 1/50     |
| J66302   | 160 PSI with indicator arm | 1/50     |

## Sillcock/Water or Gas Test Gauge Assembly



- Steel case with 2" shatterproof face
- Brass air valve
- Adapts to 3/4" male garden hose or 3/4" MIP
- Comes with garden hose adapter
- Individually boxed

| PART NO. | DESCRIPTION | CTN/MSTR |
|----------|-------------|----------|
| G64101   | 200 PSI     | 1/50     |

## 5 Pound Gas Test Gauge



- 1/4" NPT
- 2-1/2" diaphragm
- 1/10 # increments
- For building code inspection
- Individually boxed

| PART NO. | DESCRIPTION          | CTN/MSTR |
|----------|----------------------|----------|
| G61005   | 5 lb. gas test gauge | 1/100    |

## Gas Test Gauge



- 2" steel case gauge on 15 lb.
- 5 lb. is marked in 1/10 lb. increments
- 15 lbs. is marked in 1/10 lb. increments
- Plated body with 3/4" FIP inlet
- 2 1/2" diaphragm on 5 lb.
- Adapts to 3/4" MPT
- Brass air valve
- Individually boxed

| PART NO. | DESCRIPTION                    | CTN/MSTR |
|----------|--------------------------------|----------|
| G64015   | 15 lb. gas test gauge assembly | 1/50     |
| G64005   | 5 lb. gas test gauge assembly  | 1/50     |

## Test Gauge Assembly



- Bell type
- Individually boxed

| PART NO. | DESCRIPTION                     | CTN/MSTR |
|----------|---------------------------------|----------|
| G66015   | 15# x 3/4" FIP                  | 1/50     |
| G66030   | 30# x 3/4" FIP                  | 1/50     |
| G66060   | 60# x 3/4" FIP                  | 1/50     |
| G66100   | 100# x 3/4" FIP                 | 1/24     |
| G67015   | 15# x 1" FIP                    | 1/50     |
| G67030   | 30# x 1" FIP                    | 1/50     |
| G67060   | 60# x 1" FIP                    | 1/50     |
| G67100   | 100# x 1" FIP                   | 1/100    |
| G66000   | 3/4" Bell body (less air valve) | 1/100    |
| G66002   | 3/4" Bell body (with air valve) | 1/100    |
| G67000   | 1" Bell body (less air valve)   | 1/59     |
| G67002   | 1" Bell body (with air valve)   | 1/80     |

## Gas Test Gauge Assembly



- 4" face and pressure snubber
- Regulates air to an even flow
- Over pressurization will void the warranty
- Protects the diaphragm from compressed air damage
- Class 1A gauge
- Individually boxed

| PART NO. | DESCRIPTION                | CTN/MSTR |
|----------|----------------------------|----------|
| G64155   | 5 lb. test gauge assembly  | 1/20     |
| G65155   | 15 lb. test gauge assembly | 1/20     |

## Gas Test Gauge Assembly



- Steel case with 2" shatterproof face
- Adapts to 3/4" MPT
- Plated body with 3/4" FIP inlet
- Brass air valve
- Individually boxed

| PART NO. | DESCRIPTION                          | CTN/MSTR |
|----------|--------------------------------------|----------|
| G64030   | 30 PSI                               | 1/50     |
| G64060   | 60 PSI                               | 1/50     |
| G64100   | 100 PSI                              | 1/50     |
| G64160   | 160 PSI                              | 1/50     |
| G64200   | 200 PSI                              | 1/50     |
| G64333   | 300 PSI                              | 1/50     |
| G64000   | 1/4" air valve and cap               | 50/500   |
| G64001   | Gas test body only                   | 1/100    |
| G64002   | 1/8" air valve and cap               | 500/1000 |
| G64020   | Gas test body and air valve assembly | 1/100    |

## Tridicator



- 0-55 PSI
- 70°F to 250°F temperature range
- Back mount

| PART NO. | DESCRIPTION                              | CTN/MSTR |
|----------|--|----------|
| J40550   | 2 1/2" face angle 2 1/4" stem (1/4" NPT) | 1/50     |
| J40551   | 2 1/2" face angle 2 1/2" stem (1/4" NPT) | 1/50     |
| J40558   | 2 1/2" face angle 1" stem (1/4" NPT)     | 1/50     |
| J40560   | 3 1/2" face angle 2 3/4" stem (1/2" NPT) | 1/50     |

### Dual Scale Boiler Gauge



- 0-75 PSI
- 1/4" MIP connection
- -60-320° F, 20-160° C
- Center back mount
- 3-1/2" face

| PART NO. | DESCRIPTION             | CTN/MSTR |
|----------|-------------------------|----------|
| J40575   | Dual scale boiler gauge | 1/100    |

### Vacuum Gauge



- 1/4" brass lower connection
- -30 to 0 inch Hg
- Black steel case with bronze internals
- 2" face

| PART NO. | DESCRIPTION  | CTN/MSTR |
|----------|--------------|----------|
| G63001   | Vacuum gauge | 1/100    |

### Pressure Snubber



- Bronze body and core
- Use on lines with noticeable pressure changes/oscillations
- 1000 PSI maximum

| PART NO. | DESCRIPTION                      | CTN/MSTR |
|----------|----------------------------------|----------|
| G64300   | 1/4" NPT for air or gas          | 1/500    |
| G64301   | 1/4" NPT for oil, steam or water | 1/200    |

### Needle Valve for Pressure Gauge



- Brass body, seat, stem and handle
- 1/4" NPT
- 300°F maximum temperature
- Female x female
- Teflon packing
- 2000 PSI

| PART NO. | DESCRIPTION       | CTN/MSTR |
|----------|-------------------|----------|
| G64004   | 1/4" needle valve | 1/125    |

### Hot Water/Refrigerant Line Thermometer



- Straight or angle pattern
- Steel or brass well included
- 40°-280°F x 5°F (5-120°C x 2°C)
- 1/2" NPT; 1" stem

| PART NO. | DESCRIPTION                      | DIM (A) | DIM (B)  | CTN/MSTR |
|----------|----------------------------------|---------|----------|----------|
| J40500   | Straight pattern with steel well | 1"      | 1/2" NPT | 1/50     |
| J40501   | Straight pattern with brass well | 1"      | 1/2" NPT | 1/50     |
| J40502   | Angle pattern with steel well    | 1"      | 1/2" NPT | 1/50     |
| J40503   | Angle pattern with brass well    | 1"      | 1/2" NPT | 1/50     |

### Dial Thermometer



- 2-1/2" face
- 5° increments
- Dual scale: 40°-240°/0°-120°C
- Brass wells/removable thermometers
- Thermometers are not supplied with wells

| PART NO. | DESCRIPTION         | CTN/MSTR |
|----------|---------------------|----------|
| J40702   | 3/4" SWT connection | 1/50     |
| J40703   | 1/2" MIP connection | 1/100    |
| J40704   | 3/4" SWT well       | 1/100    |
| J40705   | 1/2" MIP well       | 1/100    |

### Pocket Test Thermometer



- 2% accuracy for hot and cold
- Pocket clip on sheath; 5" stem

| PART NO. | DESCRIPTION                      | CTN/MSTR |
|----------|----------------------------------|----------|
| J40700   | Cold thermometer (-40° to 160°F) | 1/80     |
| J40701   | Hot thermometer (0° to 220°F)    | 1/80     |

### Weksler Industrial Multi-Angle Thermometer



- Must have well - no well provided; order wells separately
- 9" scale, red-reading mercury tubes
- Molded cyclocac case with glass window
- Adjustable to any angle
- Accurate to +/- one scale division

| PART NO. | DESCRIPTION         | DIM (A)     | DIM (B)  | CTN/MSTR |
|----------|---------------------|-------------|----------|----------|
| J40505   | Hot water 30°-240°F | 3-1/2" stem | 1" NPSM  | 1/50     |
| J40506   | Cold water 0°-120°F | 3-1/2" stem | 1" NPSM  | 1/25     |
| J40510   | Standard brass well | 2-1/2" stem | 3/4" NPT | 1/50     |
| J40511   | Extended well       | 1-3/4" stem | 3/4" NPT | 1/50     |

### Bi-Metal Dial Thermometer



- For commercial or home heating systems
- 1/2" NPT
- 20°-240°F temperature range
- 3" dial in steel case
- Angle has back connection; straight has bottom connection

| PART NO. | DESCRIPTION                     | DIM (A)     | DIM (B)  | CTN/MSTR |
|----------|---------------------------------|-------------|----------|----------|
| J40561   | Angle outlet with brass well    | 2-3/8" stem | 1/2" NPT | 1/50     |
| J40562   | Straight outlet with brass well | 2-3/8" stem | 1/2" NPT | 1/50     |

## Knee Pads



K01120

K012000

- Lightweight and water-resistant
- Comfortable while kneeling, standing or walking
- Won't pinch or bind behind knee
- Soft, breathable inner lining for coolness and comfort
- Velcro closures on straps

| PART NO. | DESCRIPTION             | CTN/MSTR |
|----------|-------------------------|----------|
| K01120   | Heavy duty foam economy | 1/1      |
| K012000  | Heavy duty knee cap     | 1/1      |

## Nemesis® Safety Glasses



Display



- Soft-touch temples
- Light weight construction
- Single-lens wrap-around protection
- 99.9% UV resistant
- Meets ANSI Z87.1 + standards

| PART NO. | DESCRIPTION  | CTN/MSTR |
|----------|--|----------|
| G30011   | Nemesis® clear glasses   | 12/12    |
| G30012   | Nemesis® smoke mirror glasses  | 12/12    |
| G30013   | Nemesis® blue mirror glasses   | 12/12    |
| G30014   | Nemesis® camo/bronze glasses   | 12/12    |
| G30000   | Display includes: 12 pair smoke mirror, 6 pair blue mirror, 6 pair clear, free display | 1/1      |

## Hellraiser Safety Glasses



Clear



Smoke



Blue Mirror

| PART NO. | DESCRIPTION                           | CTN/MSTR |
|----------|---------------------------------------|----------|
| G30015   | Hellraiser clear safety glasses       | 12/12    |
| G30016   | Hellraiser smoke safety glasses       | 12/12    |
| G30017   | Hellraiser blue mirror safety glasses | 12/12    |

## Visio Safety Glasses



- One-piece frame
- Adjustable temples
- Sleek, lightweight and comfortable
- Meets ANSI z87.1

| PART NO. | DESCRIPTION                         | CTN/MSTR |
|----------|-------------------------------------|----------|
| G30003   | Visio clear safety glasses          | 12/12    |
| G30004   | Visio blue mirror safety glasses    | 12/12    |
| G30005   | Visio silver indoor/outdoor glasses | 12/12    |

## Clear Safety Goggles



- Direct ventilation
- Economical protection

| PART NO. | DESCRIPTION          | CTN/MSTR |
|----------|----------------------|----------|
| G30001   | Clear safety glasses | 1/200    |

## Brown Jersey Gloves



- 100% brown cotton
- One size fits all
- Knit wrist
- 8 ounce
- Priced per pair
- Header card
- CARTON QUANTITIES ONLY

| PART NO. | DESCRIPTION                                    | CTN/MSTR |
|----------|--|----------|
| G50200   | Brown cotton jersey glove                      | 12/300   |
| G50210   | Brown cotton jersey glove (display- 216 pairs) | 1/1      |

## Leather Palm Work Gloves



- Split leather palm, thumb, fingers and knuckles
- Cotton back and liner
- Safety cuff
- Priced per pair
- Header card
- CARTON QUANTITIES ONLY

| PART NO. | DESCRIPTION                  | CTN/MSTR |
|----------|------------------------------|----------|
| G50204   | Leather palm low safety cuff | 12/120   |
| G50214   | Leather palm low safety cuff | 96 pair  |

## Nitrile Gloves



- 3/4 coating offers more protection
- Micro foam nitril offers great grip
- Coating draws oil and water aside to allow for enhanced grip
- Good abrasion resistance
- Silicone free and antibacterial
- Header card
- CARTON QUANTITIES ONLY

| PART NO. | DESCRIPTION         | CTN/MSTR |
|----------|---------------------|----------|
| G50215   | Pair nitrile gloves | 12/12    |

## Pipe Lubricant



- L95202 - ORM-D. Ships UPS Ground and Motor Freight ONLY
- CARTON QUANTITIES ONLY

MADE IN THE  
**USA**

| PART NO. | DESCRIPTION         | CTN/MSTR |
|----------|---------------------|----------|
| L95200   | Quart lubricant     | 12/12    |
| L95201   | Gallon lubricant    | 4/4      |
| L95202   | Quart adhesive lube | 12/12    |

## Heavy Duty Big Wipes



- 80 count tub, 8 tubs per case; priced each
- Wipe size is 8" x 12"
- Lint free
- Removes paint, glue, oil, sealants, grease and grime
- Dermatologically tested, plus vitamin E and aloe vera added
- Dual sided, scrubs and cleans
- CARTON QUANTITIES ONLY

| PART NO. | DESCRIPTION                            | CTN/MSTR |
|----------|--|----------|
| B05050   | 80 count tub                           | 8/8      |
| B05051   | Single pack - priced each (bag of 100) | 1/100    |



## Insulated Hose Nozzle



- Heavy duty with threaded end
- Soft comfort grip
- Carded

| PART NO. | DESCRIPTION           | CTN/MSTR |
|----------|-----------------------|----------|
| G04030   | Insulated hose nozzle | 12/72    |

## Contractor Grade Rubber Hose



- Contractor grade
- Reinforced rubber
- Heavy duty brass coupling

| PART NO. | DESCRIPTION                        | CTN/MSTR |
|----------|------------------------------------|----------|
| G04026   | 3/4" x 50' contractor grade rubber | 1/2      |

## Commercial Premium Rubber Hose



| PART NO. | DESCRIPTION                          | CTN/MSTR |
|----------|--------------------------------------|----------|
| G04005   | 5/8" x 25' commercial premium rubber | 1/1      |
| G04006   | 5/8" x 50' commercial premium rubber | 1/1      |

## Garden Hose



- G04001:
- 500 PSI burst strength
  - Kink-free construction
  - Heavy-duty solid brass nickel plated coupling
  - Built-in spring at faucet end to prevent hose damage
  - Nylon reinforced
- G04002 and G04000:
- 300 PSI burst strength
  - Solid brass couplings
  - Reinforced green nylon construction

| PART NO. | DESCRIPTION                 | CTN/MSTR |
|----------|-----------------------------|----------|
| G04001   | 5/8" x 60' (500 PSI) garden | 1/6      |
| G04002   | 5/8" x 50' (300 PSI) garden | 1/6      |
| G04000   | 5/8" x 75' (300 PSI) garden | 1/6      |

## Electrical Tape



- Black vinyl
- Individually wrapped
- UL listed
- CARTON QUANTITIES ONLY



| PART NO. | DESCRIPTION                | CTN/MSTR |
|----------|----------------------------|----------|
| T20030   | 3/4" x 60' electrical tape | 10/250   |

## PTFE Thread Seal Tape



- Thickness 3 mil. plus
- Temperature range is 500°F to +650°F
- Withstands pressure up to 5000 PSI

| PART NO. | DESCRIPTION                  | CTN/MSTR |
|----------|------------------------------|----------|
| T19122   | 1/2" x 260" thread seal tape | 100/500  |
| T19125   | 1/2" x 520" thread seal tape | 100/500  |
| T19342   | 3/4" x 260" thread seal tape | 100/500  |
| T19345   | 3/4" x 520" thread seal tape | 100/500  |

## Domestic Pipe Wrap Tape



- Both sides have adhesive
- CARTON QUANTITIES ONLY

| PART NO. | COLOR  | SIZE      | THICKNESS | CTN/MSTR |
|----------|--------|-----------|-----------|----------|
| T16002   | Yellow | 2" x 100' | 12 mil.   | 24/24    |
| T16004   | Yellow | 4" x 100' | 12 mil.   | 12/12    |
| T17002   | Black  | 2" x 100' | 12 mil.   | 24/24    |
| T17004   | Black  | 4" x 100' | 12 mil.   | 12/12    |

## Imported Pipe Wrap Tape



- Black tape with PVC backing
- UPC listed
- CARTON QUANTITIES ONLY



| PART NO. | SIZE      | THICKNESS | CTN/MSTR |
|----------|-----------|-----------|----------|
| T17101   | 1" x 100' | 10 mil.   | 48/48    |
| T17102   | 2" x 100' | 10 mil.   | 24/24    |
| T17104   | 4" x 100' | 10 mil.   | 12/12    |
| T18201   | 1" x 100' | 20 mil.   | 48/48    |
| T18202   | 2" x 100' | 20 mil.   | 24/24    |

## Duct Tape



- Premium grade, waterproof non-elastic reinforced cloth
- Pressure sensitive; vapor and flame resistant
- CARTON QUANTITIES ONLY

| PART NO. | DESCRIPTION         | THICKNESS | CTN/MSTR |
|----------|---------------------|-----------|----------|
| T20020   | 2" x 60 yds (gray)  | 8.5 mil.  | 24/24    |
| T20023   | 2" x 60 yds (black) | 10 mil.   | 24/24    |

## Primer for Pipe Wrap Tape



- Maximizes tape performance
- Final step in preparing steel surfaces for taping
- Can more than double adhesion of corrosion tapes to cleaned steel
- CARTON QUANTITIES ONLY
- MOTOR FREIGHT ONLY / FLAMMABLE

| PART NO. | DESCRIPTION | CTN/MSTR |
|----------|-------------|----------|
| T16100   | Quart       | 12/12    |

## Plastic Drop Cloth



- Medium duty 1 mil plastic
- Convenient pleat fold pack design
- Protects furniture, appliances and carpets

| PART NO. | DESCRIPTION                 | CTN/MSTR |
|----------|-----------------------------|----------|
| D50000   | 9' x 12' plastic drop cloth | 1/48     |

## Cotton Canvas Drop Cloth



- 8 oz.
- Absorbs and traps spills
- Washable and reusable

| PART NO. | DESCRIPTION                       | CTN/MSTR |
|----------|-----------------------------------|----------|
| G02010   | 6' x 9' cotton canvas drop cloth  | 1/6      |
| G02011   | 9' x 12' cotton canvas drop cloth | 1/4      |

## Trash Bags



- 2'8" x 4'2"
- 20 bags per box
- 42 gallon
- 3 mil

| PART NO. | DESCRIPTION          | CTN/MSTR |
|----------|----------------------|----------|
| G02042   | 42 gallon trash bags | 1/6      |

## Self Igniting Hand Torch for MAPP or Propane



- Heavy duty
- For MAPP or propane
- Use with either Propane or MAPP Gas
- Cyclone flame pattern for concentrated high heat
- Piezo Igniter for instant flame
- Adjustable knob for variable flame patterns
- Safety lock feature to prevent accidental ignition
- Ignition lock for continuous use
- Cast body for durability, strength and long life
- Ergonomic handle design
- Stainless steel nozzle with brass tip

| PART NO. | DESCRIPTION                                  | CTN/MSTR |
|----------|--|----------|
| J40432   | Self igniting hand torch for MAPP or propane | 4/24     |
| J40529   | Hand torch with swivel tip and self-igniter  | 1/20     |
| J40329   | Replacement tip for J40529                   | 1/1      |
| J40629   | Hand torch with swivel tip                   | 1/20     |
| J40429   | Replacement tip for J40629                   | 1/1      |
| J40229   | Pencil flame torch                           | 1/1      |

## Socket Savers



- Removes Schedule 40 plastic pipe from a hub
- Cuts ABS or PVC DWV pipe below slab
- Fits 1/2" variable speed power drill
- Carded

| PART NO. | DESCRIPTION         | CTN/MSTR |
|----------|---------------------|----------|
| J44050   | 1/2" Socket Saver   | 36/144   |
| J44075   | 3/4" Socket Saver   | 30/120   |
| J44100   | 1" Socket Saver     | 24/96    |
| J44150   | 1-1/2" Socket Saver | 24/96    |
| J44200   | 2" Socket Saver     | 12/72    |
| J44300   | 3" Socket Saver     | 12/48    |
| J44400   | 4" Socket Saver     | 20/40    |

## Inside Pipe Cutter



- Cuts 2" and larger plastic pipe
- Fits electric drill

| PART NO. | DESCRIPTION            | CTN/MSTR |
|----------|------------------------|----------|
| P70023   | 3" shaft with 2 blades | 1/50     |
| P70029   | (3) Replacement blades | 1/10     |

## EZY Grind Pipe Cutter



- Fast and easy way to cut plastic pipe at or below floor level
- Cuts plastic DWV and HDPE pipe from the interior of the pipe
- Made from tool steel
- Suitable for portable power drills
- 1/4" hex shank, fits all drill chucks
- Guided cutting motion
- Pre-set depth of cut
- Replaceable diamond blade
- Carded

| PART NO. | DESCRIPTION   | CTN/MSTR |
|----------|---|----------|
| J40650   | EZY Grind plastic pipe cutter for 4" - 6" pipe                                | 1/1      |
| J40652   | Replacement blade for EZY Grind 4" - 6" plastic pipe cutter J40650 (2 pk)     | 1/1      |
| J40651   | EZY Grind plastic pipe cutter for 1-1/2" - 3" pipe                            | 1/1      |
| J40653   | Replacement blade for EZY Grind 1-1/2" - 3" plastic pipe cutter J40651 (2 pk) | 1/1      |

## E-Z Shear Inside Pipe Cutter



- Cuts PVC and ABS pipe
- High speed steel blade with zinc-plated shaft

| PART NO. | DESCRIPTION                      | CTN/MSTR |
|----------|----------------------------------|----------|
| J40830   | E-Z shear inside pipe cutter     | 24/192   |
| J40831   | (2) E-Z shear replacement blades | 1/100    |

## PVC Pipe Cutter



- High carbon steel blades
- Repair kits includes all screws and springs needed to repair cutter
- Aluminum alloy handles
- Ratchet action
- P70001 is carded

| PART NO. | DESCRIPTION       | CTN/MSTR |
|----------|-------------------|----------|
| P70001   | 1" pipe cutter    | 10/50    |
| P70005   | Replacement blade | 50/300   |
| P70015   | 1" repair kit     | 1/100    |

## Heavy Duty PVC Pipe Cutter



- High carbon steel blades
- Repair kit includes all screws and springs needed to repair cutter
- Aluminum alloy handles
- P70010 and P70002 are boxed

| PART NO. | DESCRIPTION                     | CTN/MSTR |
|----------|---------------------------------|----------|
| P70010   | 1" heavy duty pipe cutter       | 1/60     |
| P70011   | 1" heavy duty replacement blade | 1/100    |
| P70012   | 1" repair kit                   | 1/100    |
| P70002   | 2" pipe cutter                  | 1/20     |
| P70006   | 2" replacement blade            | 1/100    |
| P70016   | 2" repair kit                   | 1/100    |

## PVC One-Handed Pipe Cutter



- Easy one-handed ratchet cutting action
- Spring loaded blade
- Heat treated hardened steel blade for straighter cuts - longer life
- Cuts up to 2" pipe (2-1/2" OD)
- P70035 is carded

| PART NO. | DESCRIPTION                   | CTN/MSTR |
|----------|-------------------------------|----------|
| P70035   | 2" PVC one-handed pipe cutter | 6/24     |
| P70036   | Replacement blade             | 25/50    |

## Professional PVC Pipe Cutter



- Rustproof
- Capacity to 1-1/4" diameter PVC
- The blade is non-electro nickel plated which ensures a sharper blade
- Locking hook can be used to deburr pipe
- P70018 and P70019 are carded

| PART NO. | DESCRIPTION                    | CTN/MSTR |
|----------|--------------------------------|----------|
| P70018   | 1-1/4" PVC pipe cutter         | 5/30     |
| P70019   | Replacement blade              | 10/100   |
| P70020   | Repair kit (spring and screws) | 10/100   |

## E-Z Stroke Pipe Saw



S49005

- Cuts plastic pipe and wood
- For smooth, fast, accurate cutting
- Tri-edge teeth are borazon wheel ground
- Pull-stroke cutting action
- Flexible blade allows flush cutting without marring adjacent surface
- Replaceable blade
- Orange handle accepts all Jones Stephens E-Z Stroke blades

| PART NO. | DESCRIPTION             | CTN/MSTR |
|----------|-------------------------|----------|
| S49005   | 8" E-Z Stroke pipe saw  | 10/100   |
| S49006   | 8" Replacement blade    | 50/250   |
| S49008   | 12" E-Z Stroke pipe saw | 10/100   |
| S49007   | 12" Replacement blade   | 50/250   |

## Cable Saw



- For cutting PVC pipe
- For tight spots offering little clearance
- Fits easily into tool box and pocket
- Faster and easier than hacksaws in close quarters
- Individually bagged with header card

| PART NO. | DESCRIPTION                       | CTN/MSTR |
|----------|-----------------------------------|----------|
| S49136   | 36" cable saw display - 36 pieces | 1/1      |
| S49148   | 48" cable saw display - 24 pieces | 1/1      |
| S49036   | 36" cable saw                     | 1/36     |
| S49048   | 48" cable saw                     | 1/24     |

## Close Quarters Hacksaw



- Nickel plated steel frame
- Cuts wood, plastic, brass, aluminum and steel

| PART NO. | DESCRIPTION                       | CTN/MSTR |
|----------|-----------------------------------|----------|
| S50060   | 6" close quarters hacksaw         | 1/50     |
| S50061   | (5) Replacement blades for S50060 | 5/800    |
| S50062   | 6" adjustable hacksaw             | 12/144   |
| S50063   | (5) Replacement blades for S50062 | 5/1000   |

## 4 in 1 Screwdriver



S41001 - 12 pk Display

- Alloy tool steel bits
- Ground and polished
- Heat treated for maximum strength
- High impact handle
- Floating ball bearing for tight fit

| PART NO. | DESCRIPTION                      | CTN/MSTR |
|----------|----------------------------------|----------|
| S41001   | Phillips and slotted display     | 1/12     |
| S41002   | Slotted bit for 4 in 1 or 6 in 1 | 1/1      |
| S41003   | Phillips bit for 4 in 1          | 1/1      |

## 6 in 1 Screwdriver



S41006 - 12 pk Display

- Shaft ends are 1/4" and 15/16" hex size for use as nut drivers
- Each bit has two sizes

| PART NO. | DESCRIPTION                      | CTN/MSTR |
|----------|----------------------------------|----------|
| S41006   | 6 in 1 screwdriver display       | 1/12     |
| S41002   | Slotted bit for 4 in 1 or 6 in 1 | 1/1      |
| S41007   | Phillips bit for 6 in 1          | 1/1      |

## Water Pump



- Excellent for draining water meter boxes
- High impact PVC; non-sparking; lightweight
- No priming necessary- removes 35 ounce/stroke
- Remove foot valve to clean

| PART NO. | DESCRIPTION                      | CTN/MSTR |
|----------|----------------------------------|----------|
| P13600   | 36" pump with 72" discharge hose | 1/1      |

### Slip Jaw Pliers



- Plated finish
- Plastic grips
- Yellow handle

| PART NO. | DESCRIPTION                | CTN/MSTR |
|----------|----------------------------|----------|
| P60001   | 2-1/8" capacity / 10" long | 1/5      |

### "No Pinch" Pipe Wrench Pliers



- 10" comfort cushion grips
- Unique handle design prevents pinched fingers
- 1-3/4" jaw capacity
- Drop forged; plated finish

| PART NO. | DESCRIPTION            | CTN/MSTR |
|----------|------------------------|----------|
| P60002   | 10" Pipe wrench pliers | 4/40     |

### Smooth Jaw Pliers



- 2-1/8" jaw opening
- Smooth jaws for non-marring surfaces (chrome, polished brass)
- Cushioned vinyl grips

| PART NO. | DESCRIPTION           | CTN/MSTR |
|----------|-----------------------|----------|
| P60003   | 10" Smooth jaw pliers | 10/50    |

### Griplock Tongue and Groove Water Pump Pliers



- Comfort grips



| PART NO. | LENGTH | NO. ADJ. | CAPACITY | CHANNEL LOCK NO. | CTN/MSTR |
|----------|--------|----------|----------|------------------|----------|
| J40410   | 10"    | 5        | 1-1/4"   | GL10             | 1/5      |
| J40411   | 12"    | 6        | 2-1/4"   | GL12             | 1/5      |

### Tongue and Groove Pliers



- Right angle teeth
- Undercut tongue and groove- won't slip
- Comfort grips



| PART NO. | LENGTH | NO. ADJ. | CAPACITY | CHANNEL LOCK NO. | CTN/MSTR |
|----------|--------|----------|----------|------------------|----------|
| J40401   | 6-1/2" | 5        | 7/8"     | 426              | 1/5      |
| J40402   | 9-1/2" | 5        | 1-1/2"   | 420              | 1/5      |
| J40403   | 10"    | 7        | 2"       | 430              | 1/5      |
| J40404   | 12"    | 7        | 2-1/4"   | 440              | 1/5      |
| J40405   | 16"    | 8        | 4-1/4"   | 460              | 1/2      |

### Curved Jaw Tongue and Groove Pliers



- Curved jaw for use on round stock and tubing
- Right angle teeth



| PART NO. | LENGTH | NO. ADJ. | CAPACITY | CHANNEL LOCK NO. | CTN/MSTR |
|----------|--------|----------|----------|------------------|----------|
| J40407   | 9-1/2" | 5        | 1-1/2"   | 422              | 1/5      |
| J40408   | 12"    | 7        | 2-1/4"   | 442              | 1/5      |

### Smooth Jaw Tongue and Groove Pliers



- Smooth jaws for non-marring surfaces (PVC, chromes, etc.)
- Undercut tongue and groove- won't slip
- Comfort grips



| PART NO. | LENGTH | NO. ADJ. | CAPACITY | CHANNEL LOCK NO. | CTN/MSTR |
|----------|--------|----------|----------|------------------|----------|
| J40406   | 10"    | 7        | 2"       | 415              | 1/5      |

### Bucket Caddies



T60101



T60103



T60104



T60108

- 5 gallon high-impact red plastic bucket holds 4 combinations of trays- 3 large; 6 small; 1 large with 4 small; and 2 large with 2 small
- All trays have 4 sections; use tray subdividers to increase small tray capacity up to 8 sections
- Tool apron fits 5 and 3 1/2" gallon buckets; apron straps on or can be permanently secured (hardware included)
- Made in the USA

MADE IN THE USA

| PART NO. | DESCRIPTION                                       | CTN/MSTR |
|----------|---|----------|
| T60101   | 5 gallon bucket with 6 small trays                | 1/8      |
| T60102   | 5 gallon bucket with 1 large tray & 4 small trays | 1/8      |
| T60103   | Large trays (4-1/2" deep)                         | 1/3      |
| T60104   | Small trays (2-1/2" deep)                         | 1/6      |
| T60105   | Lid for 5 gallon bucket                           | 1/1      |
| T60106   | 5 gallon bucket only                              | 1/1      |
| T60107   | Subdividers for small trays (4 pack)              | 1/1      |
| T60108   | 20-pocket tool apron                              | 1/1      |
| T60110   | 5 gallon bucket with 2 large and 2 small trays    | 1/1      |
| T60111   | 5 gallon bucket with 3 large trays                | 1/1      |

### Ratchet Tie Down Strap



- 1" wide/400 lb. working load limit
- Comfort grip handles
- Weather and corrosion resistant
- PVC coated hooks that will not scratch
- Cut and abrasion resistant webbing

| PART NO. | DESCRIPTION                     | CTN/MSTR |
|----------|---------------------------------|----------|
| S20300   | 1" x 16' ratchet tie down strap | 1/4      |

## Ratchet Strap with Step Release J-Hooks



- 2" wide/ 3,333 lb. working load limit
- Step by step release action
- Gradually releases tension with double J-hook
- Flex grip handle

| PART NO. | DESCRIPTION            | CTN/MSTR |
|----------|------------------------|----------|
| S20302   | 2" x 27' ratchet strap | 1/8      |

## Fiberglass Handle Shovel



- STINGER SERIES - Fiberglass handle is 40% stronger than Federal Strength Test for long handle wood tools.
- Large steel collar adds maximum strength to handle/socket connection.
- Forward - turned step for secure foot placement

| PART NO. | DESCRIPTION                 | AMES # | CTN/MSTR |
|----------|-----------------------------|--------|----------|
| S49412   | Long handle square point    | SFGLS  | 1/6      |
| S49416   | D-Handle 16" drain spade    | SFGD16 | 1/6      |
| S49413   | Long handle 16" drain spade | SFGDSL | 1/6      |

## Long Handle Round Point Fiberglass Shovel



- Long fiberglass handle
- Round point

| PART NO. | DESCRIPTION             | CTN/MSTR |
|----------|-------------------------|----------|
| S49400   | Long handle round point | 1/12     |

## Premium Grade Wood Handle Shovel



- Lacquered ash handle
- Premium blade

| PART NO. | DESCRIPTION                  | AMES # | CTN/MSTR |
|----------|------------------------------|--------|----------|
| S49421   | Long handle round point      | BMTLR  | 1/6      |
| S49422   | Long handle square point     | BMTLS  | 1/6      |
| S49417   | D-Handle round point         | BMTDR  | 1/6      |
| S49423   | D-Handle 16" drain spade     | 15-738 | 1/6      |
| S49425   | LH trenching shovel 4" blade | 15-566 | 1/6      |
| S49427   | LH trenching shovel 5" blade | 15-567 | 1/6      |

## Economy Grade Wood Handle Shovel



- Wood handle
- Standard steel blade

| PART NO. | DESCRIPTION              | AMES # | CTN/MSTR |
|----------|--------------------------|--------|----------|
| S49431   | Long handle round point  | 15-047 | 1/6      |
| S49432   | Long handle square point | 15-049 | 1/6      |

## Economy Grade Wood Handle Shovel



- Wood handle
- Standard steel blade

| PART NO. | DESCRIPTION              | CTN/MSTR |
|----------|--------------------------|----------|
| S49401   | Long handle round point  | 1/6      |
| S49402   | Long handle square point | 1/6      |

## Specialty Shovel



- KODIAK CUB - smaller design for easier use in tight spaces
- 16 gauge tempered steel blade
- Forward turned step
- 27" overall length



| PART NO. | DESCRIPTION            | AMES # | CTN/MSTR |
|----------|------------------------|--------|----------|
| S49429   | Compact utility shovel | 15-663 | 1/6      |

## Rayovac® Industrial Batteries



- Priced per battery
- PACK QUANTITIES ONLY

| PART NO. | DESCRIPTION               | CTN/MSTR |
|----------|---------------------------|----------|
| F20006   | Heavy duty C batteries    | 6/72     |
| F20007   | Heavy duty D batteries    | 6/72     |
| F20012   | AAA alkaline batteries    | 8/96     |
| F20008   | AA alkaline batteries     | 8/96     |
| F20009   | 9 volt alkaline batteries | 6/72     |
| F20010   | C alkaline batteries      | 6/72     |
| F20011   | D alkaline batteries      | 6/72     |

## Energizer® Alkaline Batteries



- Priced per pack
- Carded
- PACK QUANTITIES ONLY

| PART NO. | DESCRIPTION                     | CTN/MSTR |
|----------|---------------------------------|----------|
| F20020   | AAA alkaline batteries - 2 pack | 1/48     |
| F20021   | AAA alkaline batteries - 4 pack | 1/48     |
| F20022   | AA alkaline batteries - 2 pack  | 1/48     |
| F20023   | AA alkaline batteries - 4 pack  | 1/48     |
| F20024   | C alkaline batteries - 2 pack   | 1/48     |
| F20025   | D alkaline batteries - 2 pack   | 1/12     |
| F20026   | 9 volt alkaline battery         | 1/48     |

## Caution Tape



- Black print on safety yellow
- 3 mil thickness
- Non-stick

| PART NO. | DESCRIPTION             | CTN/MSTR |
|----------|-------------------------|----------|
| J43300   | 3" x 300' caution tape  | 1/16     |
| J43310   | 3" x 1000' caution tape | 1/8      |

## Gas Line Marking Labels



- Yellow self adhesive stickers
- Clearly identifies gas lines from other utility and water lines
- 100 labels per roll

| PART NO. | DESCRIPTION             | CTN/MSTR |
|----------|-------------------------|----------|
| J40481   | 2 PSI gas line stickers | 1/100    |
| J40482   | Gas line stickers       | 1/100    |

## WD-40® Lubricant



- Cleans
- Protects against rust and corrosion
- Lubricates
- Penetrates stuck metal parts
- Displaces moisture
- Low VOC
- ORM-D
- GROUND TRANSPORTATION ONLY
- CARTON QUANTITIES ONLY

| PART NO. | DESCRIPTION                 | CTN/MSTR |
|----------|-----------------------------|----------|
| S95800   | 8 oz. can lubricant low VOC | 12/12    |

## Slic-tite® Heavy Duty Thread Sealing Compound



- Working pressures: to 10,000 PSI (liquids), 3,000 (gases)
- Temp: -50°F to +500°F
- Use for threaded connections on steel, aluminum, brass, PVC, CPVC & ABS



| PART NO. | DESCRIPTION                                     | CTN/MSTR |
|----------|---|----------|
| S95011   | 8 fl. oz. Slic-tite® HD thread sealing compound | 1/24     |
| S95010   | Pint Slic-tite® HD thread sealing compound      | 1/24     |

## Rustoleum® Industrial Choice® Construction Marking Paint



- Product Application: construction, excavation, surveying, landscaping, and other commercial operations
- Best resistance to early fading and chalking; dries fast
- Excellent visibility on concrete, pavement, dirt, gravel, grass & more
- Easy to apply – no messy tip adjustments, non-clogging, locking spray tip won't pop off
- 17 oz.
- 40-90°F application temperature range
- Less than 5 minutes dry time at 70-80°F
- MIR compliant
- GROUND TRANSPORTATION ONLY
- CARTON QUANTITIES ONLY



| PART NO. | DESCRIPTION                        | CTN/MSTR |
|----------|------------------------------------|----------|
| J40380   | White marking paint                | 12/12    |
| J40381   | Hi visibility yellow marking paint | 12/12    |
| J40382   | Safety red marking paint           | 12/12    |
| J40383   | Caution blue marking paint         | 12/12    |
| J40384   | Fluorescent green marking paint    | 12/12    |
| J40385   | Fluorescent orange marking paint   | 12/12    |
| J40387   | Fluorescent pink marking paint     | 12/12    |

## Paint Spotter Hand-Help Wand



- For quick, easy one-hand application of marking point
- Non-adjustable

| PART NO. | DESCRIPTION   | CTN/MSTR |
|----------|---------------|----------|
| J40386   | Paint spotter | 1/1      |

**ALSO AVAILABLE FROM JONES STEPHENS:**



DECORATIVE

FAUCET AND BATH ACCESSORIES



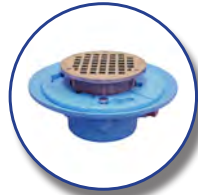
SPECIALITIES AND REPAIR

MISCELLANEOUS PLUMBING SPECIALTIES



FITTINGS AND VALVES

COMMERCIAL/RESIDENTIAL PLASTICS



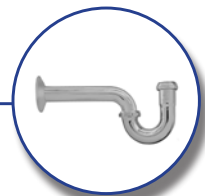
CAST IRON

TOOLS



GASKETS & COUPLINGS

TUBULAR



PVC DWV FITTINGS

BLACK AND GALVANIZED  
MALLEABLES/PIPE NIPPLES



COPPER

TOILET SEATS



*Contact your Jones Stephens sales representative for full catalog!*

