

JONES STEPHENS

STAMPED METAL

Stud guards, pipe brackets, hanger tape, stud shoes, and more... **NAILED IT!**



JONES STEPHENS™

We Got It -

TABLE OF CONTENTS

Stud Guards	3
F.H.A. Straps.....	4
Stud Shoes.....	4
Pipe Brackets	4-5
Insulators.....	6
Pipe Hangers	6
Pipe Hooks	6
Pipe Straps	7
Hanger Tape.....	7
Tie Wire	7
Nails.....	7

** Published January 2018. List prices effective 1/2/18.*

***Product images correspond to the product listed underneath the image.*

Self-Nailing Stud Guards

- Protects piping and wiring from nails
- CARTON QUANTITIES ONLY

MADE IN THE
USA



• No holes

PART NO.	SIZE	GAUGE	CTN/MSTR	LIST
S16003	1-1/2" x 3"	16	100/100	.19
S16015	1-1/2" x 4"	16	100/100	.25
S16005	1-1/2" x 5"	16	100/100	.27
S33005	1-1/2" x 6"	16	100/100	.32
S16009	1-1/2" x 9"	16	100/100	.60
S16012	1-1/2" x 12"	16	100/100	.74
S16018	1-1/2" x 18"	16	50/50	1.02
S16024	1-1/2" x 24"	16	25/25	1.39
S33036	2" x 5"	16	100/100	.44
S33035	3" x 5"	16	100/100	.55
S16008	5" x 8"	16	50/50	1.13
S33002	1-1/2" x 3"	18	100/100	.14
S33006	1-1/2" x 5"	18	100/100	.22
S33001	1-1/2" x 6"	18	100/100	.25
S33038	3" x 5"	18	100/100	.31
S16007	1-1/2" x 5"	20	100/100	.20
S16014	1-1/2" x 8"	20	100/100	.39
S20009	1-1/2" x 9"	20	100/100	.42
S20012	1-1/2" x 12"	20	100/100	.49
S33011	1-1/2" x 3"	22	100/100	.12
S33010	1-1/2" x 6"	22	100/100	.22



• No holes

PART NO.	SIZE	GAUGE	CTN/MSTR	LIST
S33037	4" x 5"	16	100/100	.89
S16010	5" x 8"	16	25/25	1.13



• No holes

PART NO.	SIZE	GAUGE	CTN/MSTR	LIST
S33039	3" x 5" offset	16	100/100	.47
S16001	3" x 5" offset	16	25/25	.62
S16002	5" x 6" offset	16	50/50	1.12



• Interlocking - No holes

PART NO.	SIZE	GAUGE	CTN/MSTR	LIST
S33007	1-1/2" x 6"	16	100/100	.32
S33016	3-1/2" x 6"	16	25/25	.98
S16004	1-1/2" x 6"	18	100/100	.27
S33004	1-1/2" x 6"	20	100/100	.22



• Two holes

PART NO.	SIZE	GAUGE	CTN/MSTR	LIST
S16011	5" x 8"	16	25/25	1.13
S180032	1-1/2" x 3"	18	200/200	.21



• Six holes

PART NO.	SIZE	GAUGE	CTN/MSTR	LIST
S33013	5" x 8"	16	25/25	1.77

**Product images correspond to the product listed underneath the image.

Not Self-Nailing Stud Guards

- Protects piping and wiring from nails
- CARTON QUANTITIES ONLY

MADE IN THE
USA



• Two holes

PART NO.	SIZE	GAUGE	CTN/MSTR	LIST
S16006	1-1/2" x 6"	16	100/100	.31
S16016	1-1/2" x 6"	18	100/100	.27



• Two holes

PART NO.	SIZE	GAUGE	CTN/MSTR	LIST
F12001	3-1/2" x 6"	16	25/25	.64



• Four holes

PART NO.	SIZE	GAUGE	CTN/MSTR	LIST
S33012	3-1/2" x 6"	16	100/100	1.02
S33318	3-1/2" x 18"	16	25/25	2.48



• Six holes

PART NO.	SIZE	GAUGE	CTN/MSTR	LIST
S16017	3-1/2" x 6"	16	25/25	.64



• Six holes

PART NO.	SIZE	GAUGE	CTN/MSTR	LIST
S33003	5" x 8"	16	50/50	1.74



• Twelve holes

PART NO.	SIZE	GAUGE	CTN/MSTR	LIST
S163566	3-1/2" x 6"	16	25/25	.99



• Sixteen holes

PART NO.	SIZE	GAUGE	CTN/MSTR	LIST
F12004	3" x 18"	16	50/50	1.44



• Sixteen holes

PART NO.	SIZE	GAUGE	CTN/MSTR	LIST
F12003	3-1/2" x 18"	16	25/25	1.85



• Sixteen holes

PART NO.	SIZE	GAUGE	CTN/MSTR	LIST
F12002	5" x 18"	16	15/15	2.55



• Twenty holes

PART NO.	SIZE	GAUGE	CTN/MSTR	LIST
S33518	5" x 18"	16	15/15	3.06

F.H.A. Straps

• CARTON QUANTITIES ONLY

MADE IN THE USA



• Four holes

PART NO.	SIZE	GAUGE	CTN/MSTR	LIST
F165181	5" x 18"	16	15/15	2.98



• Two holes

PART NO.	SIZE	GAUGE	CTN/MSTR	LIST
F180032	1-1/2" x 3"	18	200/200	.19



• Six holes

PART NO.	SIZE	GAUGE	CTN/MSTR	LIST
F160123	1-1/2" x 12"	16	50/50	.71
F160183	1-1/2" x 18"	16	50/50	.93
F160243	1-1/2" x 24"	16	50/50	1.12
F160363	3" x 6"	16	50/50	.87
F160393	3" x 9"	16	50/50	1.08
F160063	1-1/2" x 6"	16	50/50	.43
F160093	1-1/2" x 9"	16	50/50	.54



• Eight offset holes

PART NO.	SIZE	GAUGE	CTN/MSTR	LIST
F12009	1-1/2" x 9"	12	50/50	.63
F12012	1-1/2" x 12"	12	50/50	.83
F12018	1-1/2" x 18"	12	50/50	1.19
F12024	1-1/2" x 24"	12	50/50	1.47
F14012	1-1/2" x 12"	14	50/50	.88
F16012	1-1/2" x 12"	16	50/50	.71
F160184	1-1/2" x 18"	16	50/50	.93
F160094	1-1/2" x 9"	16	50/50	.54
F18009	1-1/2" x 9"	18	100/100	.43
F18012	1-1/2" x 12"	18	100/100	.58
F18018	1-1/2" x 18"	18	100/100	.72
F18024	1-1/2" x 24"	18	100/100	.87



• Twelve offset holes

PART NO.	SIZE	GAUGE	CTN/MSTR	LIST
F160126	1-1/2" x 12"	16	50/50	.71
F16016	1-1/2" x 16"	16	50/50	.95
F160186	1-1/2" x 18"	16	50/50	.93
F160246	1-1/2" x 24"	16	50/50	1.12
F163186	3" x 18"	16	50/50	2.16
F163246	3" x 24"	16	50/50	2.71
F165186	5" x 18"	16	15/15	2.98



• Twelve holes

PART NO.	SIZE	GAUGE	CTN/MSTR	LIST
F18309	3" x 9"	18	50/50	.70
F18312	3" x 12"	18	50/50	.74
F18318	3" x 18"	18	50/50	1.27
F18324	3" x 24"	18	50/50	1.67

Stud Shoes

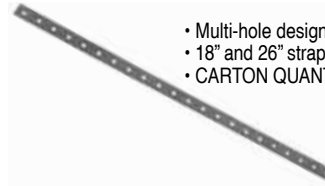


- 4 nail holes on each side
- Pipe opening accommodates 2" IPS or smaller pipe
- Stud/joist reinforcement when drilling or notching for pipe runs
- CARTON QUANTITIES ONLY

MADE IN THE USA

PART NO.	DESCRIPTION	GAUGE	CTN/MSTR	LIST
S33021	Single stud shoe	18	50/50	2.16
S33022	Double stud shoe	18	25/25	2.82
S33023	Triple stud shoe	18	10/10	3.94
S33024	Single stud shoe	16	50/50	1.77
S33025	Double stud shoe	16	25/25	1.97
S33026	Triple stud shoe	16	10/10	2.30

Hanger Straps



- Multi-hole design allows for versatility
- 18" and 26" straps accommodate most common jobs
- CARTON QUANTITIES ONLY

MADE IN THE USA

PART NO.	SIZE	GAUGE	CTN/MSTR	LIST
S33041	5/8" x 18"	14	100/100	.35
S33040	5/8" x 26"	14	100/100	.60

Flat Copper Plated Bracket



- For use on sinks, lavatories or other fixtures
- Use for 1/2" copper pipe
- CARTON QUANTITIES ONLY

MADE IN THE USA

PART NO.	SIZE	HR #	CTN/MSTR	LIST
B00003	1/2" x 20"	101-18	50/50	5.09
B00021	1/2" x 26"	101-26	50/50	6.58

Flat Copper Plated Bracket



- For use on water heater connections
- Use for 3/4" and 1" copper pipe
- CARTON QUANTITIES ONLY

MADE IN THE USA

PART NO.	SIZE	HR #	CTN/MSTR	LIST
B00004	3/4" - 1" x 20"	102-18	50/50	5.16

Flat Copper Plated Bracket



- For use on 1/2", 3/4" or 1" copper pipe
- CARTON QUANTITIES ONLY

MADE IN THE USA

PART NO.	SIZE	HR #	CTN/MSTR	LIST
B00005	1/2" - 1" x 20"	107-18	50/50	5.16

**Product images correspond to the product listed underneath the image.

Flat Copper Plated Bracket



- Copper-Bonded™ steel
- For support of 1/2" and 3/4" pipes on 4" or 8" centers
- Positions copper water supplies for sinks, water closets, and other fixtures
- 25 lb. load rating
- CARTON QUANTITIES ONLY



PART NO.	SIZE	HR #	CTN/MSTR	LIST
B00025	1/2" - 3/4" x 20"	150-20	50/50	5.79

Copper Plated Carrier Bracket



- Secures 1" stub out at 11-1/2" above the rim
- CARTON QUANTITIES ONLY



PART NO.	DESCRIPTION	HR #	CTN/MSTR	LIST
B00022	Carrier bracket	114-C	6/6	14.85

Pipe Bracket



- 150 lb. load capacity
- Can attach to stud or directly to wall
- CARTON QUANTITIES ONLY



PART NO.	DESCRIPTION	HR #	CTN/MSTR	LIST
B00024	Pipe bracket	V2	25/25	16.71

Extruded Hole Copper Plated Bracket



- For use on 1/2", 3/4" or 1" copper pipe
- Extruded holes
- CARTON QUANTITIES ONLY



PART NO.	SIZE	HR #	CTN/MSTR	LIST
B00006	1/2" - 1" x 20"	108-20	50/50	5.29
B00019	1/2" - 1" x 26"	108-26	50/50	8.29

Extruded Notches Copper Plated Bracket



- For use on 1/2", 3/4" or 1" copper pipe
- Extruded holes
- CARTON QUANTITIES ONLY



PART NO.	SIZE	HR #	CTN/MSTR	LIST
B00007	1/2" - 3/4" x 20"	140	50/50	5.95

Galvanized Bracket



- For use on sinks, lavatories and toilets on 16" center spuds
- For use with 1/2" and 3/4" CPVC; 1/2", 3/4" and 1" copper or PEX
- 1-3/8" keyed holes, 20" long
- Use with B00016, B00017, B00018 and B00013
- CARTON QUANTITIES ONLY



PART NO.	SIZE	HR #	CTN/MSTR	LIST
B00001	1/2" - 1" x 20"	103-18	50/50	4.47

Galvanized Lockright Pipe Bracket for CPVC



- For use on sinks or lavatories using CPVC
- 20 gauge galvanized steel with 1" holes on 2" centers
- Use with B00014
- CARTON QUANTITIES ONLY



PART NO.	SIZE	HR #	CTN/MSTR	LIST
B00008	1/2" - 3/4" x 20"	601-20	50/50	4.96

Galvanized Lockright Bracket



- CARTON QUANTITIES ONLY

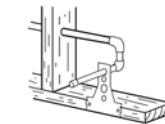


PART NO.	SIZE	HR #	CTN/MSTR	LIST
B00020	1/2" - 3/4" x 26"	601-26	50/50	5.59

Copper Plated Bracket for Water Closet



- For use on 1/2" copper pipe
- For use with water closets or hose bibbs
- CARTON QUANTITIES ONLY



PART NO.	SIZE	HR #	CTN/MSTR	LIST
B00002	1/2"	109-N-6	50/50	5.28

Galvanized L Bracket for PEX



- For use with PEX on overhead and side runs
- Use with B00013, B00016, B00017 and B00018 inserts
- CARTON QUANTITIES ONLY



PART NO.	SIZE	HR #	CTN/MSTR	LIST
B00009	1-3/8"	709L	50/50	2.95

Turnout Bend Support for PEX



- PEX turnout bend support for potable water installations
- CARTON QUANTITIES ONLY



PART NO.	SIZE	HR #	CTN/MSTR	LIST
B00013	3/8" - 1/2"	704	25/100	2.37

**Product images correspond to the product listed underneath the image.

Insert for CPVC



- Fire retardant plastic
- CARTON QUANTITIES ONLY



PART NO.	DESCRIPTION	HR #	CTN/MSTR	LIST
B00014	1/2" insert	604	100/100	1.16

Metal Stud Insulator



- Fire retardant plastic
- Use for copper pipe
- CARTON QUANTITIES ONLY



PART NO.	DESCRIPTION	HR #	CTN/MSTR	LIST
B00016	1/2" insulator	404-R	100/100	.78
B00017	3/4" insulator	405-R	100/100	.78
B00018	1" insulator	406-R	100/100	.78

Galvanized Pipe Hanger for Schedule 40 Pipe



- Alternating screw and nail holes
- Load rating 250# max
- CARTON QUANTITIES ONLY



PART NO.	DESCRIPTION	CTN/MSTR	LIST
H30001	1-1/2" galvanized pipe hanger	50/50	1.76
H30002	2" galvanized pipe hanger	50/50	1.99
H30003	3" galvanized pipe hanger	50/50	2.14
H30004	4" galvanized pipe hanger	50/50	2.50

Vinyl Coated Pipe Hanger for Schedule 40 Pipe



- Alternating screw and nail holes
- Load rating 250# max
- CARTON QUANTITIES ONLY

PART NO.	DESCRIPTION	CTN/MSTR	LIST
H30011	1-1/2" vinyl coated pipe hanger	100/100	3.32
H30022	2" vinyl coated pipe hanger	50/50	3.55
H30033	3" vinyl coated pipe hanger	50/50	4.01
H30044	4" vinyl coated pipe hanger	50/50	4.58

Vinyl Coated Pipe Hanger for DWV Pipe



- Alternating screw and nail holes
- Provides maximum support
- Vinyl coating dampens noise and vibration
- Cuts installation time
- CARTON QUANTITIES ONLY

PART NO.	DESCRIPTION	CTN/MSTR	LIST
H30005	1-1/2" (3/4" wide) vinyl coated pipe hanger	50/50	2.34
H30006	2" (3/4" wide) vinyl coated pipe hanger	50/50	2.78
H30007	3" (3/4" wide) vinyl coated pipe hanger	50/50	3.48
H30008	4" (3/4" wide) vinyl coated pipe hanger	50/50	4.20
H30012	1-1/2" (1" wide) vinyl coated pipe hanger	50/50	2.78
H30013	2" (1" wide) vinyl coated pipe hanger	50/50	3.27
H30014	3" (1" wide) vinyl coated pipe hanger	50/50	3.84
H30015	4" (1" wide) vinyl coated pipe hanger	50/50	4.51

**Product images correspond to the product listed underneath the image.

Drive J-Hook



- Copper clad
- CARTON QUANTITIES ONLY



PART NO.	DESCRIPTION	CTN/MSTR	LIST
H23050	1/2" x 3/4" CTS drive j-hook	100/100	.13

Plastic Coated Pipe Hook



- Steel pipe hook with plastic insulation
- Coated black
- CARTON QUANTITIES ONLY



PART NO.	DESCRIPTION	CTN/MSTR	LIST
H12054	1/2" x 4" plastic coated pipe hook	50/1000	.43
H12056	1/2" x 6" plastic coated pipe hook	50/1000	.48
H12074	3/4" x 4" plastic coated pipe hook	50/1000	.43
H12076	3/4" x 6" plastic coated pipe hook	50/1000	.49
H12106	1" x 6" plastic coated pipe hook	50/1000	.56

"Copper Boy" Pipe Hook



- CARTON QUANTITIES ONLY



PART NO.	DESCRIPTION	CTN/MSTR	LIST
H10052	1/2" x 2-1/2" copper clad pipe hook	50/2200	.13
H10072	3/4" x 2-1/2" copper clad pipe hook	50/500	.13

Pipe Hook



Plain Steel



Copper Clad

- 10 gauge
- CARTON QUANTITIES ONLY



PART NO.	SIZE	MATERIAL	CTN/MSTR	LIST
H10054	1/2" x 4"	Plain Steel	50/500	.29
H10056	1/2" x 6"	Plain Steel	50/500	.44
H10058	1/2" x 8"	Plain Steel	50/500	.41
H10074	3/4" x 4"	Plain Steel	50/500	.29
H10076	3/4" x 6"	Plain Steel	50/500	.41
H10078	3/4" x 8"	Plain Steel	50/500	.47
H10080	3/4" x 10"	Plain Steel	50/500	.91
H10106	1" x 6"	Plain Steel	50/500	.41
H10108	1" x 8"	Plain Steel	50/500	.41
H10110	1" x 10"	Plain Steel	50/500	.88
H10126	1-1/4" x 6"	Plain Steel	50/500	.55
H10128	1-1/4" x 8"	Plain Steel	50/500	.64
H10156	1-1/2" x 6"	Plain Steel	50/500	.53
H10158	1-1/2" x 8"	Plain Steel	50/500	.61
H10208	2" x 8"	Plain Steel	50/500	.61
H11054	1/2" x 4"	Copper Clad	50/500	.32
H11056	1/2" x 6"	Copper Clad	50/500	.48
H11058	1/2" x 8"	Copper Clad	50/500	.43
H11074	3/4" x 4"	Copper Clad	50/500	.46
H11076	3/4" x 6"	Copper Clad	50/500	.62
H11078	3/4" x 8"	Copper Clad	50/500	.65
H11080	3/4" x 10"	Copper Clad	50/500	1.09
H11106	1" x 6"	Copper Clad	50/500	.62
H11108	1" x 8"	Copper Clad	50/500	.43
H11126	1-1/4" x 6"	Copper Clad	50/500	.53
H11156	1-1/2" x 6"	Copper Clad	50/500	.63
H11208	2" x 8"	Copper Clad	50/500	.64
H11210	2" x 10"	Copper Clad	50/500	1.03

Pipe Straps



MADE IN THE
USA

• CARTON QUANTITIES ONLY

PART NO.	SIZE	MATERIAL	# HOLES	CTN/MSTR	LIST
H18050	1/2" IPS	Galvanized	1	100/100	.19
H18075	3/4" IPS	Galvanized	1	100/100	.37
H13038	3/8" IPS	Galvanized	2	200/200	.07
H13050	1/2" IPS	Galvanized	2	150/150	.09
H13075	3/4" IPS	Galvanized	2	50/50	.15
H13100	1" IPS	Galvanized	2	50/50	.20
H13125	1-1/4" IPS	Galvanized	2	50/50	.28
H13150	1-1/2" IPS	Galvanized	2	25/25	.32
H13200	2" IPS	Galvanized	2	25/25	.50
H13250	2-1/2" IPS	Galvanized	2	25/25	1.06
H13300	3" IPS	Galvanized	2	10/10	1.14
H13302	3-1/2" IPS	Galvanized	2	15/15	3.09
H13400	4" IPS	Galvanized	2	10/10	1.53
H130500	6" IPS	Galvanized	2	20/20	3.55
H15048	1/4" CTS	Copper Clad	2	500/500	.23
H15049	3/8" CTS	Copper Clad	2	500/500	.26
H15050	1/2" CTS	Copper Clad	2	100/100	.12
H15075	3/4" CTS	Copper Clad	2	100/100	.13
H15100	1" CTS	Copper Clad	2	100/100	.27
H15125	1-1/4" CTS	Copper Clad	2	100/100	.32
H15150	1-1/2" CTS	Copper Clad	2	100/100	.27
H15200	2" CTS	Copper Clad	2	100/100	.32
H16038	3/8" CTS	Solid Copper	2	100/100	.68
H16050	1/2" CTS	Solid Copper	2	100/100	.55
H16075	3/4" CTS	Solid Copper	2	100/100	.80
H16100	1" CTS	Solid Copper	2	100/100	.88
H13501	1-1/2" IPS	Vinyl Coated	2	50/50	1.54
H13502	2" IPS	Vinyl Coated	2	50/50	2.60
H13503	3" IPS	Vinyl Coated	2	25/25	3.32
H13504	4" IPS	Vinyl Coated	2	25/25	4.06

Plastic Hanger Tape



- Flexible, non-conductive polypropylene
- .050 thick
- 1/8" diameter holes every 3/4"
- 125 lb. ultimate load ASTM A-370-77 (Not H21200)
- Can be cut with scissors or utility knife
- Uses: pipe hanger, duct hanger and tubing utility strapping

MADE IN THE
USA

PART NO.	SIZE	CTN/MSTR	LIST
H21010	3/4" x 10'	1/200	1.52
H21025	3/4" x 25'	1/50	3.32
H21050	3/4" x 50'	1/20	6.20
H21100	3/4" x 100'	1/30	10.36
H21101	3/4" x 100' (dispenser box)	1/25	11.83
H21200	2" x 100'	1/5	26.04

Perforated Hanger Iron



- Alternating holes (bolt and nail)
- CARTON QUANTITIES ONLY

MADE IN THE
USA

PART NO.	SIZE	MATERIAL	GAUGE	CTN/MSTR	LIST
H20001	3/4" x 10'	Galvanized	20 (heavy)	50/50	1.51
H20002	3/4" x 10'	Galvanized	24 (medium)	50/50	1.25
H20003	3/4" x 10'	Galvanized	28 (light)	50/50	1.22
H20005	3/4" x 50'	Galvanized	20 (heavy)	10/10	8.51
H20006	3/4" x 50'	Galvanized	24 (medium)	10/10	7.44
H20007	3/4" x 50'	Galvanized	28 (light)	10/10	7.16
H20010	3/4" x 100'	Galvanized	20 (heavy)	5/5	16.56
H20011	3/4" x 100'	Galvanized	24 (medium)	10/10	14.30
H20012	3/4" x 100'	Galvanized	28 (light)	10/10	12.52
H20100	3/4" x 10'	Copper Clad	22 (heavy)	50/50	3.81
H20150	3/4" x 50'	Copper Clad	22 (heavy)	10/10	20.63
H20101	3/4" x 10'	Copper	24 (medium)	100/100	9.66

Earthquake Strap



- Holes are spread 1" apart on center
- CARTON QUANTITIES ONLY

PART NO.	SIZE	GAUGE	CTN/MSTR	LIST
H20500	2" x 10'	22	1/10	5.59

Tie Wire



- Annealed and rolled to assure easily workable
- Ideal for securing rebar in place before pouring concrete
- CARTON QUANTITIES ONLY

MADE IN THE
USA

PART NO.	SIZE	GAUGE	CTN/MSTR	LIST
S33200	400'	16	20/20	23.15

Copper Clad Nails



- CARTON QUANTITIES ONLY

MADE IN THE
USA

PART NO.	SIZE	MATERIAL	CTN/MSTR	LIST
H15001	1-1/4"	Copper Clad	200/2000	.11

Copper Coated J-Nails



- CARTON QUANTITIES ONLY

MADE IN THE
USA

PART NO.	SIZE	MATERIAL	CTN/MSTR	LIST
H22050	1/2"	Copper Clad	100/1300	.16
H22075	3/4"	Copper Clad	100/1300	.22

**Product images correspond to the product listed underneath the image.

NAILED IT!

Contact your local Jones Stephens Sales Rep to place an order today!



We Got It -

South 3249 Moody Parkway • Moody, AL 35004 | North 50 Keystone Blvd. East • Pottsville, PA 17901 | West 28624 Witherspoon Parkway • Valencia, CA 91355

Contact Us: Phone 800.355.6637 | Fax 800.462.6991 | Web www.jonesstephens.com